



User Manual

Code: TM-50/W
GRAPHIC KEYPAD FOR ALARM CONTROL PANEL **TM-50/W** PARADOX

Warning!

Please read the user manual included in this work as it contains important information related with safety of installation and use of the device.

Only persons who read the user manual may use the device.

The user manual must be kept because it may be required in the future. The device is to be used exclusively for purposes specified in this user manual.

The device must be unpacked prior to starting-up. After removing the packaging make sure the device is in working order.

If the product has defects, it should not be used until it is repaired.

The product is intended for use at home and commercial use and may not be used for other than intended use.

The manufacturer is not liable for damages resulting from not adhering to the rules contained in the user manual, therefore, we recommend to follow the aforementioned safety rules for operation and maintenance of the device. In this way you will ensure yourself safety and avoid causing damage to the device.

The manufacturer and the supplier are not liable for losses or damages arising out of the product, including financial or intangible losses, loss of profits, income, data, pleasure from use of the product or other products related with it - indirect, incidental or consequential loss or damage. The above provisions apply whether the loss or damage concerns:

1. Deterioration of quality or the lack of operation of the products or products related with it due to damage as well as the lack of access to the product when it is undergoing repair, which results in stoppage the loss of user's time or a break in business activity;
2. Improper results of operation of the product or products related with it;
3. It applies to losses and damages according to any legal category, including negligence and other losses, termination of a contract, expressed or implied guarantee and strict liability (even if the manufacturer or the supplier was notified about the possibility of occurrence of such damages).

Safety measures:

Particular attention at designing was directed to quality standards of the device where ensuring safety of operation is the most important factor.

The device must be secured against contact with caustic, staining and viscous fluids.

The device was designed in such a way that it restarts operation when power supply is restored after a break.

Attention! We recommend using protections to further protect the device from possible overvoltages in installations. Surge protectors are effective protection against accidental pass to the device voltages higher than the rated. Damages caused by pass the voltages higher than specified in manual, are not under warranty.

Turn off the device before transporting it.

Prior to connecting the device to a power source check whether the supplied voltage is consistent with rated voltage specified in the user manual.

Proper product disposal:

A marking of a crossed out waste bin indicates that the product may not be disposed together with other household waste in the entire EU. To avoid possible damage to the natural environment of health due to uncontrolled waste disposal, therefore, it should be handed over for recycling, propagating in this way sustainable use of natural resources.

To return a worn-out product, use a collection and disposal system of this type of equipment or contact a seller from whom it was purchased. He will then be recycled in an environmentally-friendly way.

The TM-50/W touch keypad does not only stand for attractive design, but also for simplification for the daily operation of advanced alarm systems and home automation using the functionalities of the PARADOX: Digiplex EVO, Spectra, Magellan control units.

Simple and intuitive menu makes the system operations simple and obvious. Floor plans displaying function allows to immediate localization of the violated detector. The Synoptic Table mode enables viewing the status of all partitions and lines on one screen. A complement of the alarm system functions is a possibility to display indoor and outdoor temperatures (extra sensor needed). In screen saving mode a touchscreen can be used as "photo frame" displaying the images saved on MicroSD card.

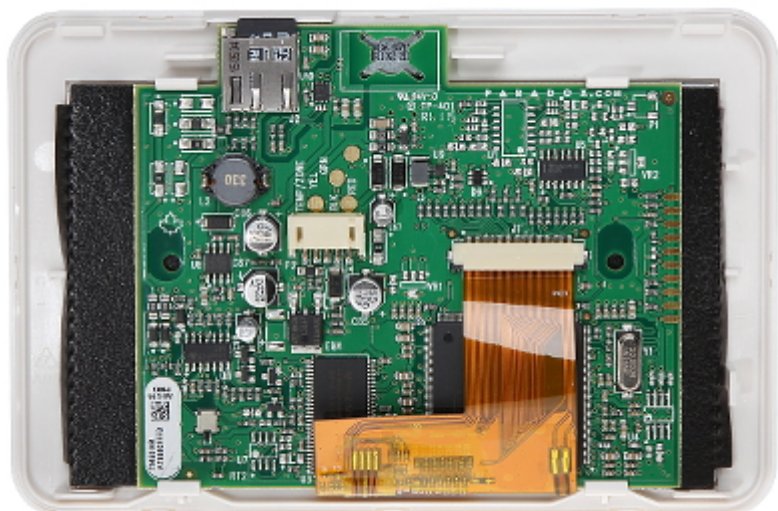


Support:	PARADOX: SPECTRA SP/MAGELLAN MG V4.72+, EVO V2.16+
Main features:	<ul style="list-style-type: none"> • Easily readable LCD with backlight displaying detailed information on system state • 5 " capacitive touch screen - 16 bit / 480 x 272 px, • 1 Input - The ability to connect 1 alarm zone / Temperature Sensor • OSD menu full in Polish • Assign to one or more partitions • Alarms: keypad hold-down PANIC, FIRE and AUX • Independently set chime zones • Buzzer for acoustic signaling of some system events • SpotOn Locator - floor plans function, • One Screen Monitoring - synoptic table function, • Connects to 4-wire communication bus • Possibility to control 8 PGM outputs • Temperature Sensor, • The microSD cards support - floor plans and images loading - 4 GB (included), • Digital photo frame mode
Power supply:	9 V ... 16 V DC
Current consumption:	max. 200 mA
Color:	White
Permissible relative humidity:	5 % ... 90 %
Weight:	0.182 kg
Dimensions:	144 x 96 x 16 mm
Country of origin:	Canada
Manufacturer / Brand:	PARADOX
Guarantee:	2 years

Front panel:



View after remove the cover:

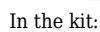


Memory card slot:



Mounting side view:





DELTA-OPTI Monika Matysiak; <https://www.delta.poznan.pl>
POL; 60-713 Poznań; Graniczna 10
e-mail: delta-opti@delta.poznan.pl; tel: +(48) 61 864 69 60