

## Warning!

Please read the user manual included in this work as it contains important information related with safety of installation and use of the device.

Only persons who read the user manual may use the device.

The user manual must be kept because it may be required in the future. The device is to be used exclusively for purposes specified in this user manual.

The device must be unpacked prior to starting-up. After removing the packaging make sure the device is in working order.

If the product has defects, it should not be used until it is repaired.

The product is intended for use at home and commercial use and may not be used for other than intended use.

The manufacturer is not liable for damages resulting from not adhering to the rules contained in the user manual, therefore, we recommend to follow the aforementioned safety rules for operation and maintenance of the device. In this way you will ensure yourself safety and avoid causing damage to the device.

The manufacturer and the supplier are not liable for losses or damages arising out of the product, including financial or intangible losses, loss of profits, income, data, pleasure from use of the product or other products related with it - indirect, incidental or consequential loss or damage. The above provisions apply whether the loss or damage concerns:

1. Deterioration of quality or the lack of operation of the products or products related with it due to damage as well as the lack of access to the product when it is undergoing repair, which results in stoppage the loss of user's time or a break in business activity;
2. Improper results of operation of the product or products related with it;
3. It applies to losses and damages according to any legal category, including negligence and other losses, termination of a contract, expressed or implied guarantee and strict liability (even if the manufacturer or the supplier was notified about the possibility of occurrence of such damages).

### Safety measures:

Particular attention at designing was directed to quality standards of the device where ensuring safety of operation is the most important factor.

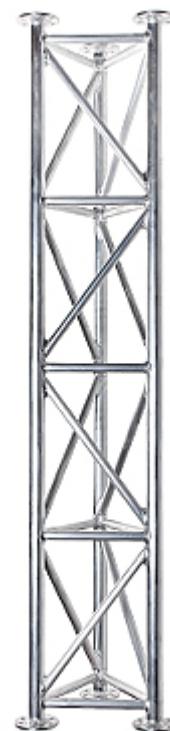
The device must be secured against contact with caustic, staining and viscous fluids.

The MK-1.5 mast is a solid, lightweight aluminum construction with the possibility of entering it by a qualified installer. It can be placed with only one hand.

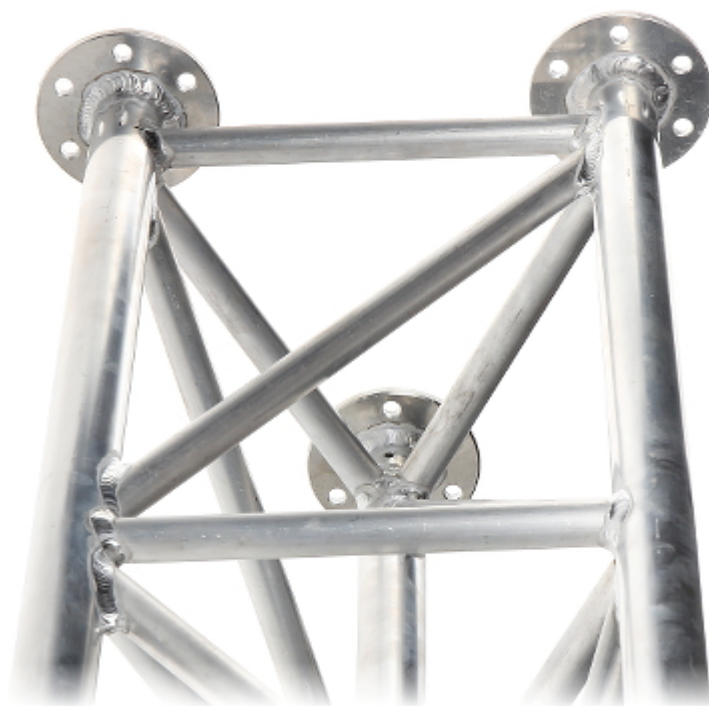
No need for guy-wires makes the mast requires little space and has a beneficial effect on aesthetics.

The mast is designed for mounting light devices such as CCTV cameras, Wi-Fi, LTE antennas or small radio links in the first wind zone (according to EUROCODE standards for Poland). The technical calculations available in the downloads are only a reference for designers. The accompanying documentation should not be considered as installation guidelines.

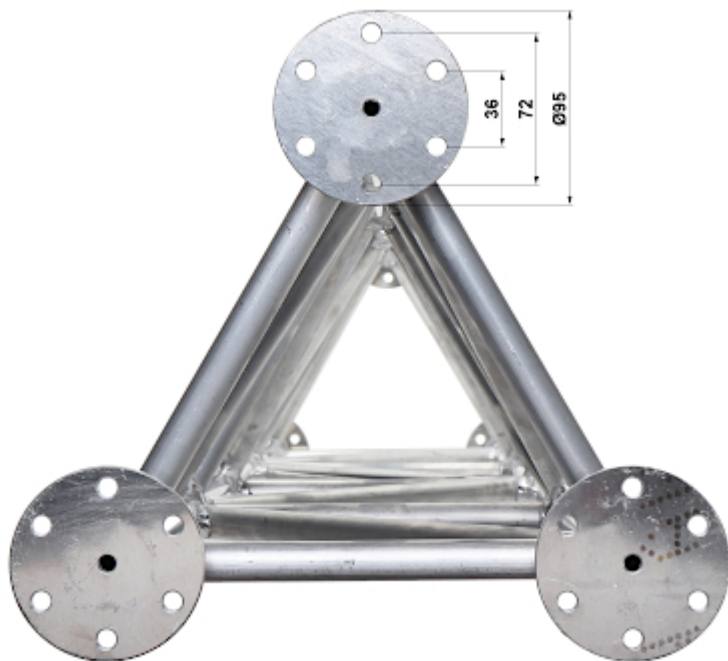
In the case of less typical installation locations and loads, we encourage you to contact us to verify your needs in technical terms.



Height of the mast:	1.5 m
Number of sections:	1
Wall thickness:	1.5 mm
Material:	Aluminum
Possibility to combine to each other:	✓
Construction:	Truss of triangular cross-section : 250 x 250 x 250 mm
Supporting pillars:	Aluminum tube Ø 35 mm
Main features:	<ul style="list-style-type: none"> <li>• No need for guy-wires up to 6 m height</li> <li>• The MK-1.5/POD base application enables laying a mast</li> <li>• Possibility of entering the assembled mast by the person weighing up to 100 kgs with winds up to 5 m/s</li> <li>• The possibility of transport in the trunk of a passenger car</li> </ul>
Weight:	5.05 kg
Manufacturer / Brand:	DELTA
Guarantee:	<b>3 years</b>



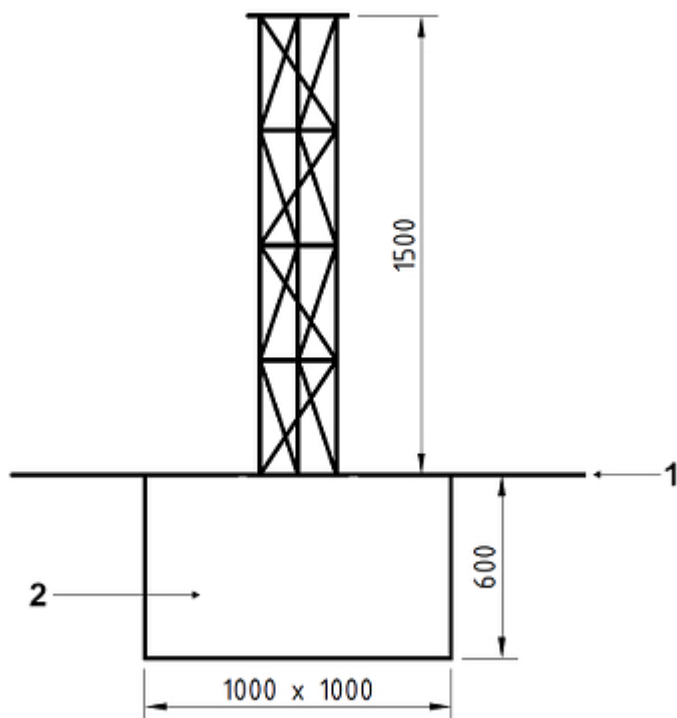
Bottom view:



Two sections combined:



Schematic diagram:



1. Ground level

2. Concrete foundation

The MK-1.5/POD base application enables laying a mast:



Example of application:  
Height 3 m:



Height 4.5 m:



Height 6 m:





Prepared form-work for the foundation of the mast:



Poured foundation of the mast with embedded anchor and established base:



Ready foundation with the set mast:



In the kit:





# User Manual

Code: MK-1.5  
ALUMINUM TRUSS MAST **MK-1.5**

## PACKAGE

Dimensions (L x W x H): 0x0x0 mm	Gross Weight: 0 kg
----------------------------------	--------------------