



# User Manual

Code: RG-RAP6260(H)

ACCESS POINT **RG-RAP6260(H)** Wi-Fi 6 2.4 GHz, 5 GHz 1148 Mbps + 4804 Mbps REYEE

## Warning!

Please read the user manual included in this work as it contains important information related with safety of installation and use of the device.

Only persons who read the user manual may use the device.

The user manual must be kept because it may be required in the future. The device is to be used exclusively for purposes specified in this user manual.

The device must be unpacked prior to starting-up. After removing the packaging make sure the device is in working order.

If the product has defects, it should not be used until it is repaired.

The product is intended for use at home and commercial use and may not be used for other than intended use.

The manufacturer is not liable for damages resulting from not adhering to the rules contained in the user manual, therefore, we recommend to follow the aforementioned safety rules for operation and maintenance of the device. In this way you will ensure yourself safety and avoid causing damage to the device.

The manufacturer and the supplier are not liable for losses or damages arising out of the product, including financial or intangible losses, loss of profits, income, data, pleasure from use of the product or other products related with it - indirect, incidental or consequential loss or damage. The above provisions apply whether the loss or damage concerns:

1. Deterioration of quality or the lack of operation of the products or products related with it due to damage as well as the lack of access to the product when it is undergoing repair, which results in stoppage the loss of user's time or a break in business activity;
2. Improper results of operation of the product or products related with it;
3. It applies to losses and damages according to any legal category, including negligence and other losses, termination of a contract, expressed or implied guarantee and strict liability (even if the manufacturer or the supplier was notified about the possibility of occurrence of such damages).

### Safety measures:

Particular attention at designing was directed to quality standards of the device where ensuring safety of operation is the most important factor.

The device must be secured against contact with caustic, staining and viscous fluids.

The device was designed in such a way that it restarts operation when power supply is restored after a break.

**Attention! We recommend using protections to further protect the device from possible overvoltages in installations. Surge protectors are effective protection against accidental pass to the device voltages higher than the rated. Damages caused by pass the voltages higher than specified in manual, are not under warranty.**

Turn off the device before transporting it.

Prior to connecting the device to a power source check whether the supplied voltage is consistent with rated voltage specified in the user manual.

### Proper product disposal:

A marking of a crossed out waste bin indicates that the product may not be disposed together with other household waste in the entire EU. To avoid possible damage to the natural environment of health due to uncontrolled waste disposal, therefore, it should be handed over for recycling, propagating in this way sustainable use of natural resources.

To return a worn-out product, use a collection and disposal system of this type of equipment or contact a seller from whom it was purchased. He will then be recycled in an environmentally-friendly way.

The RG-RAP6260(H) access point broadcasts 2 separate wireless networks in the 5 GHz band with speed 4804 Mb/s and in the 2.4 GHz band with speed 1148 Mb/s. The Access Point is designed for outdoor use, ensuring good connectivity in extreme weather environments over longer distances.

The product meets the IP68 tightness class.



Frequency range:	2.4 GHz, 5 GHz
Antenna type:	4x4 MU-MIMO, 2.4 GHz - 3 dBi / 5 GHz - 4 dBi, Integrated - 8 x Omnidirectional antenna
Standards:	IEEE 802.11 a/b/g/n/ac/ax
Baud rates:	2.4 GHz : max. 1148 Mbps + 5 GHz : max. 4804 Mbps
Protections:	WPA-PSK, WPA2-PSK, WPA/WPA2-PSK
LAN ports:	<ul style="list-style-type: none"> <li>• 1 x 100/1000/2500 Base-TX + PoE IN</li> <li>• 1 x 1000 Base-X port SFP</li> </ul>
Mobile phones support:	Android: Free application <a href="#">Ruijie Reyee</a> iOS (iPhone): Free application <a href="#">Ruijie Reyee</a>
Management interface:	Web browser, Ruijie Cloud
Default IP address:	10.44.77.253
Transmitter power:	≤ 35 dBm @ 2.4 GHz ≤ 36 dBm @ 5 GHz
Housing:	Outdoor, plastic (Weatherproof)
Overvoltage protection:	4 kV lightning
Power supply PoE:	✓



# User Manual

Code: RG-RAP6260(H)

ACCESS POINT **RG-RAP6260(H)** Wi-Fi 6 2.4 GHz, 5 GHz 1148 Mbps + 4804 Mbps REYEE

Power supply:	<ul style="list-style-type: none"><li>• PoE (802.3bt)</li><li>• Passive PoE</li><li>• 48 V / 1 A (power adapter not included)</li></ul>
Power consumption:	≤ 40 W
Operation temp:	-40 °C ... 65 °C
Permissible relative humidity:	0 % ... 100 % (non-condensing)
Certificates:	CE, RoHS
Main features:	<ul style="list-style-type: none"><li>• Access Point is managed through the web and the cloud (Ruijie Reyee application)</li><li>• Mobile phones support</li><li>• Number of users : 512 (max)</li><li>• Multi-SSID ( max. 8 )</li><li>• Enable/Disable Wireless Radio</li><li>• WMM (Wi-Fi Multimedia)</li><li>• Transmit power control</li><li>• Support for Reyee Mesh technology</li><li>• Beamforming (TxBF) - technology that allows to create a beam of radio waves in order to improve the quality of connection with client devices located further away from the signal source</li><li>• Load balance</li><li>• Rate limit</li><li>• Wireless Network Schedule</li><li>• Wireless transmission statistics</li><li>• Access control</li><li>• MAC addresses filtering</li><li>• Wireless isolation between clients</li><li>• RESET button</li><li>• LED indication</li><li>• Power supply PoE</li><li>• Easy to install on any wall or pole (mounting kit included)</li><li>• Seamless Roaming - 802.11k/v roaming function switches clients automatically to the AP with the optimal signal with a seamless transition when moving. This allows sensitive applications like VoIP and video conferences to go uninterrupted</li></ul>
"Index of Protection":	IP68
Weight:	2.9 kg (without mounting kit)
Dimensions:	300 x 300 x 75.5 mm (without mounting kit)
Pole diameters range:	Ø 70 ... Ø 140 mm
Manufacturer / Brand:	RUIJIE / REYEE
Guarantee:	<b>3 years</b>

Front view:



Mounting side view:





Device connectors:



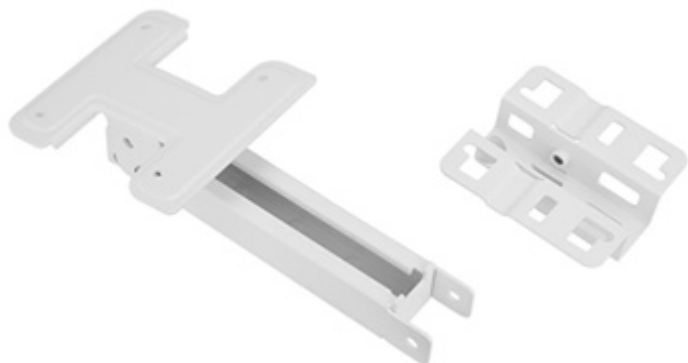
Bracket view:



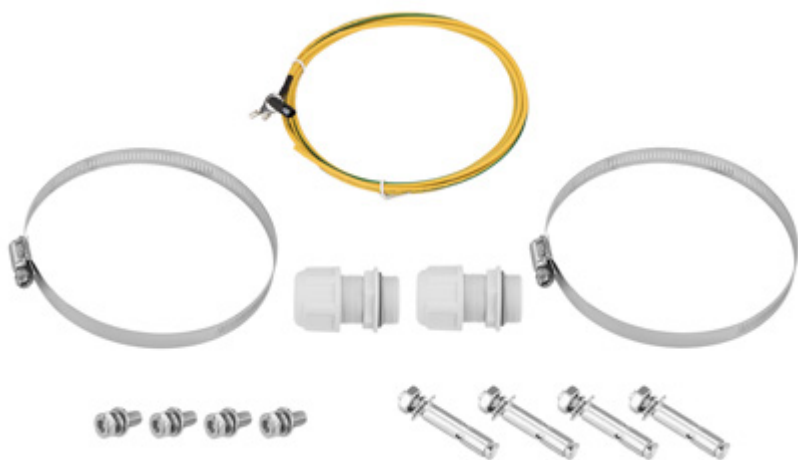
# User Manual

Code: RG-RAP6260(H)

ACCESS POINT **RG-RAP6260(H)** Wi-Fi 6 2.4 GHz, 5 GHz 1148 Mbps + 4804 Mbps REYEE



In the kit:



PACKAGE

Dimensions (L x W x H): 0x0x0 mm	Gross Weight: 0 kg
----------------------------------	--------------------