



# User Manual

Code: RG-AP680(CD)

ACCESS POINT **RG-AP680(CD)** Wi-Fi 6, SFP 2.4 GHz, 5 GHz, 547 Mbps + 1201 Mbps RUIJIE

## Warning!

Please read the user manual included in this work as it contains important information related with safety of installation and use of the device.

Only persons who read the user manual may use the device.

The user manual must be kept because it may be required in the future. The device is to be used exclusively for purposes specified in this user manual.

The device must be unpacked prior to starting-up. After removing the packaging make sure the device is in working order.

If the product has defects, it should not be used until it is repaired.

The product is intended for use at home and commercial use and may not be used for other than intended use.

The manufacturer is not liable for damages resulting from not adhering to the rules contained in the user manual, therefore, we recommend to follow the aforementioned safety rules for operation and maintenance of the device. In this way you will ensure yourself safety and avoid causing damage to the device.

The manufacturer and the supplier are not liable for losses or damages arising out of the product, including financial or intangible losses, loss of profits, income, data, pleasure from use of the product or other products related with it - indirect, incidental or consequential loss or damage. The above provisions apply whether the loss or damage concerns:

1. Deterioration of quality or the lack of operation of the products or products related with it due to damage as well as the lack of access to the product when it is undergoing repair, which results in stoppage the loss of user's time or a break in business activity;
2. Improper results of operation of the product or products related with it;
3. It applies to losses and damages according to any legal category, including negligence and other losses, termination of a contract, expressed or implied guarantee and strict liability (even if the manufacturer or the supplier was notified about the possibility of occurrence of such damages).

### Safety measures:

Particular attention at designing was directed to quality standards of the device where ensuring safety of operation is the most important factor.

The device must be secured against contact with caustic, staining and viscous fluids.

The device was designed in such a way that it restarts operation when power supply is restored after a break.

**Attention! We recommend using protections to further protect the device from possible overvoltages in installations. Surge protectors are effective protection against accidental pass to the device voltages higher than the rated. Damages caused by pass the voltages higher than specified in manual, are not under warranty.**

Turn off the device before transporting it.

Prior to connecting the device to a power source check whether the supplied voltage is consistent with rated voltage specified in the user manual.

### Proper product disposal:

A marking of a crossed out waste bin indicates that the product may not be disposed together with other household waste in the entire EU. To avoid possible damage to the natural environment of health due to uncontrolled waste disposal, therefore, it should be handed over for recycling, propagating in this way sustainable use of natural resources.

To return a worn-out product, use a collection and disposal system of this type of equipment or contact a seller from whom it was purchased. He will then be recycled in an environmentally-friendly way.

The RG-AP680(CD) access point broadcasts 2 separate wireless networks in the 5 GHz band with speed 1201 Mb/s and in the 2.4 GHz band with speed 574 Mb/s.

The Access Point is designed for outdoor use, ensuring good connectivity in extreme weather environments over longer distances.

Supports 802.11ax standard - the next generation of Wi-Fi.

Access Point is managed through the web and the cloud (Ruijie Reyee application).



Frequency range:	<ul style="list-style-type: none"> <li>• 2.4 GHz ( 2.4 ... 2.4835 GHz ) ,</li> <li>• 5 GHz ( 5.150 ... 5.250, 5.250 ... 5.350, 5.470 ... 5.725, 5.725 ... 5.850 GHz ) ,</li> </ul>
Antenna type:	2x2 MU-MIMO - embedded <ul style="list-style-type: none"> <li>• 9 dBi @ 2.4 GHz</li> <li>• 9 dBi @ 5 GHz</li> </ul>
Standards:	<ul style="list-style-type: none"> <li>• IEEE 802.11 b/g/n/ax @ 2.4 GHz,</li> <li>• IEEE 802.11 a/n/ac/ax @ 5 GHz</li> </ul>
Baud rates:	547 Mbps @ 2.4 GHz + 1201 Mbps @ 5 GHz
LAN ports:	<ul style="list-style-type: none"> <li>• 1 x 10 / 100 / 1000 Mbps Ethernet + PoE IN - RJ45,</li> <li>• 1 x 1000 Mbps - SFP</li> </ul>
Port USB:	—
LED indicators:	Power / System, 3 x Signal indicator
DDNS:	—
DHCP server:	✓
Firmware update:	✓
Protections:	<ul style="list-style-type: none"> <li>• WEP 64/128-bit, WPA-TKIP, WPA-PSK, WPA2 AES</li> <li>• IEEE 802.1x and Radius Authentication</li> <li>• Black list</li> <li>• Access Control List - ACL package filtering based on source and destination MAC addresses</li> <li>• CPP</li> <li>• NFPP</li> <li>• SSID hiding</li> </ul>



# User Manual

Code: RG-AP680(CD)

ACCESS POINT **RG-AP680(CD)** Wi-Fi 6, SFP 2.4 GHz, 5 GHz, 547 Mbps + 1201 Mbps RUIJIE

Operation modes:	Access Point
Management interface:	<ul style="list-style-type: none"><li>• Ruijie Cloud Central Management System</li><li>• Configuration using the Ruijie Reyee application</li><li>• Remote management</li><li>• Web browser</li><li>• Console - RJ-45 output</li></ul>
Mobile phones support:	Android: Free application <a href="#">Ruijie Reyee</a> iOS (iPhone): Free application <a href="#">Ruijie Reyee</a>
Default IP address:	192.168.110.1
Transmitter power:	max. 28 dBm @ 2.4 GHz max. 28 dBm @ 5 GHz
Main features:	<ul style="list-style-type: none"><li>• Wi-Fi 6 support - a standard that offers higher speeds, better performance in high-traffic environments</li><li>• OFDMA</li><li>• MU-MIMO - a multi-antenna transmission function that allows to increase the bandwidth and reliability of connection with the client of the network</li><li>• Load balance</li><li>• WLAN : 32 x BSSID - 16 x Wireless BSSID</li><li>• Multicast</li><li>• IPv4/IPv6</li><li>• ICMP - Static routing</li><li>• VPN support : IPsec, PPPoE</li><li>• SNMP</li><li>• Statistical Reporting, System logs</li><li>• DHCP client</li><li>• Bluetooth 5.0 interface</li><li>• RESET button</li><li>• Signal indicator</li><li>• Industrial wide temperature design.</li><li>• Overvoltage protection : 9 kV</li></ul>
Housing:	Plastic, hermetic
"Index of Protection":	IP68
Power supply PoE:	PoE (802.3af/at)
Power supply:	<ul style="list-style-type: none"><li>• 48 V DC / 0.35 A (not included)</li><li>• PoE / PoE+</li></ul>
Power consumption:	max. 12.95 W
Operation temp:	-40 °C ... 65 °C
Permissible relative humidity:	0 % ... 100 % (non-condensing)
Weight:	<ul style="list-style-type: none"><li>• 1.2 kg (without bracket)</li></ul>
Dimensions:	251 x 168 x 64 mm (without bracket)
Manufacturer / Brand:	RUIJIE
Guarantee:	<b>3 years</b>

Front view:



Mounting side view:





Device connectors:



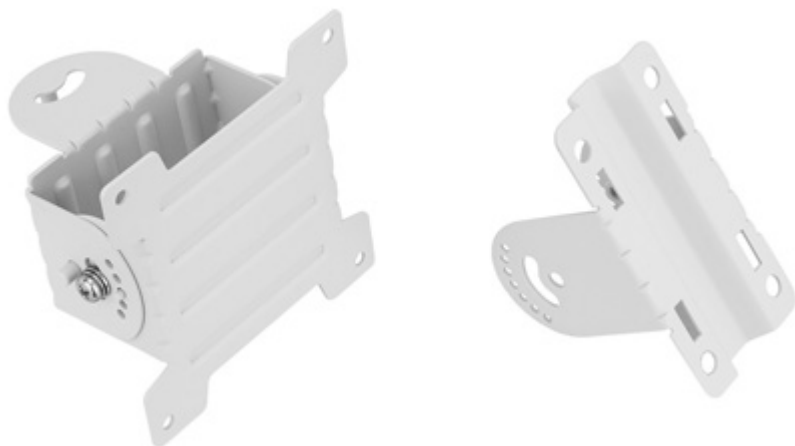
Bracket view:



# User Manual

Code: RG-AP680(CD)

ACCESS POINT **RG-AP680(CD)** Wi-Fi 6, SFP 2.4 GHz, 5 GHz, 547 Mbps + 1201 Mbps RUIJIE



In the kit:



PACKAGE

Dimensions (L x W x H): 0x0x0 mm	Gross Weight: 0 kg
----------------------------------	--------------------