



User Manual

Code: IPC-HFW5449T1-ASE-D2-0360B

IP CAMERA **IPC-HFW5449T1-ASE-D2-0360B** Full-Color Dual-Lens - 4 Mpx 3.6 mm DAHUA

Warning!

Please read the user manual included in this work as it contains important information related with safety of installation and use of the device.

Only persons who read the user manual may use the device.

The user manual must be kept because it may be required in the future. The device is to be used exclusively for purposes specified in this user manual.

The device must be unpacked prior to starting-up. After removing the packaging make sure the device is in working order.

If the product has defects, it should not be used until it is repaired.

The product is intended for use at home and commercial use and may not be used for other than intended use.

The manufacturer is not liable for damages resulting from not adhering to the rules contained in the user manual, therefore, we recommend to follow the aforementioned safety rules for operation and maintenance of the device. In this way you will ensure yourself safety and avoid causing damage to the device.

The manufacturer and the supplier are not liable for losses or damages arising out of the product, including financial or intangible losses, loss of profits, income, data, pleasure from use of the product or other products related with it - indirect, incidental or consequential loss or damage. The above provisions apply whether the loss or damage concerns:

1. Deterioration of quality or the lack of operation of the products or products related with it due to damage as well as the lack of access to the product when it is undergoing repair, which results in stoppage the loss of user's time or a break in business activity;
2. Improper results of operation of the product or products related with it;
3. It applies to losses and damages according to any legal category, including negligence and other losses, termination of a contract, expressed or implied guarantee and strict liability (even if the manufacturer or the supplier was notified about the possibility of occurrence of such damages).

Safety measures:

Particular attention at designing was directed to quality standards of the device where ensuring safety of operation is the most important factor.

The device must be secured against contact with caustic, staining and viscous fluids.

The device was designed in such a way that it restarts operation when power supply is restored after a break.

Attention! We recommend using protections to further protect the device from possible overvoltages in installations. Surge protectors are effective protection against accidental pass to the device voltages higher than the rated. Damages caused by pass the voltages higher than specified in manual, are not under warranty.

Turn off the device before transporting it.

Prior to connecting the device to a power source check whether the supplied voltage is consistent with rated voltage specified in the user manual.

Proper product disposal:

A marking of a crossed out waste bin indicates that the product may not be disposed together with other household waste in the entire EU. To avoid possible damage to the natural environment of health due to uncontrolled waste disposal, therefore, it should be handed over for recycling, propagating in this way sustainable use of natural resources.

To return a worn-out product, use a collection and disposal system of this type of equipment or contact a seller from whom it was purchased. He will then be recycled in an environmentally-friendly way.

The **DAHUA Dual-Lens** Network Camera is a modern camera combining 3 innovative technologies: **Dual Light Fusion** - image processing based on 2 sensors and 2 lenses, **Dahua Full-Color** - 24/7 color image, **WizMind** - Artificial Intelligence functions. The camera also has 2 hybrid LED illuminators equipped with IR and white light LEDs.

The **Dual Light Fusion** technology allows the camera to collect visible color details of the image and lightness information using for this purpose separate lenses. One camera sensor processes the image in the visible light range and the other in the infrared range. Thanks to the pixel-level frame-to-frame mapping, the captured images are clear, high-definition and with vivid colors, even when the supplementary white light is off. Such image processing can significantly reduce light pollution in the monitored scene at night.

By utilizing the high precision AA - Active Alignment process, the lenses and sensors of these cameras are precisely aligned, which enables that the captured image is clearly and accurately restored. The large aperture of the lens F1.0 increases the amount of light hitting the sensor. The large size of the sensor 1/1.8" provides increase in the brightness of the image. As a result, the camera achieves a S/N ratio 14 times higher compared to conventional models.

IP camera with efficient H.264 / H.265 image compression algorithm for clear and smooth video streaming at maximal resolution of 4 MPx. The camera has extensive functions of intelligent image analysis. PoE powering possibility, compatible with the 802.3af/ePoE standard makes the device more universal and easier to install.



Standard:	TCP/IP
Sensor:	2 x 1/1.8 " Progressive Scan CMOS
Matrix size:	4 Mpx
Resolution:	2688 x 1520 - 4 Mpx , 2560 x 1440 - 3.7 Mpx , 2304 x 1296 - 3 Mpx , 1920 x 1080 - 1080p , 1280 x 960 - 1.3 Mpx , 1280 x 720 - 720p
Scanning system:	Progressive
Lens:	2 x 3.6 mm / F1.0
View angle:	<ul style="list-style-type: none"> • 75 ° (manufacturer data) • 91 ° (our tests result)
Range of IR illumination:	≤ 50 m
White light LED illuminator range:	≤ 50 m
Min. illumination:	0.0002 Lux / F1.0 (color)
RS-485 interface:	—
Memory card slot:	Micro SD memory cards up to 256GB support (possible local recording)



User Manual

Code: IPC-HFW5449T1-ASE-D2-0360B

IP CAMERA **IPC-HFW5449T1-ASE-D2-0360B** Full-Color Dual-Lens - 4 Mpx 3.6 mm DAHUA

Image compression method:	H.265+ / H.265 / H.264+ / H.264 / H.264B / MJPEG
Alarm inputs / outputs:	1 / 1
Audio:	<ul style="list-style-type: none">• Audio input,• Microphone built-in,• Audio output,• Speaker built-in,• Bi-directional audio streaming support,• Audio detection
Main stream frame rate:	25 fps @ 4 Mpx
Network interface:	10/100 Base-T (RJ-45)
Network protocols:	IPv4/IPv6, HTTP, TCP, UDP, ARP, RTP, RTSP, SMTP, FTP, DHCP, DNS, NTP, Multicast, DDNS
WEB Server:	Built-in
Max. number of on-line users:	20
ONVIF:	20.12
Mobile phones support:	Port no.: 37777 or access by a cloud (P2P) <ul style="list-style-type: none">• Android: Free application DMSS• iOS (iPhone): Free application DMSS
Default IP address:	192.168.1.108
Default admin user / password:	admin / - The administrator password should be set at the first start
Web browser access ports:	80, 37777
PC client access ports:	37777
Mobile client access ports:	37777
Port ONVIF:	80
RTSP URL:	rtsp://admin:haslo@192.168.1.108:554/cam/realmonitor?channel=1&subtype=0 - Main stream rtsp://admin:haslo@192.168.1.108:554/cam/realmonitor?channel=1&subtype=1 - Sub stream



User Manual

Code: IPC-HFW5449T1-ASE-D2-0360B

IP CAMERA **IPC-HFW5449T1-ASE-D2-0360B** Full-Color Dual-Lens - 4 Mpx 3.6 mm DAHUA

Main features:	<ul style="list-style-type: none">• Dual AI image sensors with multi-spectral imaging technology that produces colorful images in low illumination conditions• Dahua Multi-Spectrum Fusion technology extracts the details and brightness of the visible spectrum and infrared spectrum to create a single image with a brightness close to the visible light brightness, so the camera provides a better image in low light• D-WDR - Wide Dynamic Range• 3D-DNR - Digital Noise Reduction• ROI - improve the quality of selected parts of image• NAS - Network Attached Storage support• BLC/HLC - Back Light / High Light Compensation• Day/Night mode (color/b&w/auto)• Full Color - colorful night mode• Auto White Balance• AGC - Automatic Gain Control• Motion Detection• Configurable Privacy Zones• Mirror - Mirror image• Built-in hybrid illuminator (LED - IR/white)• SMD 3.0 - searching for an object classified as: human, motor vehicle• Heat map - the selection in the image by corresponding colors the areas with different traffic• IVS analysis : crossing the line (tripwire), intrusion, fast moving - classification of people and vehicles, parking detection, scene changing, abandoned/missing object, detection of people gathering, loitering detection, counting people entering and leaving the area, counting people or the time of their stay with the option of setting an alarm, people counting - Supports area or queue management and the ability to configure up to 4 rules, face detection - supports 6 types of facial attributes extraction, supports 8 types of face expressions
Housing:	Compact - Metal
Color:	White + Black
"Index of Protection":	IP67
Vandal-proof:	—
Power supply:	<ul style="list-style-type: none">• PoE (802.3af),• ePoE,• 12 V DC / 875 mA
Power consumption:	<ul style="list-style-type: none">• ≤ 9.8 W @ PoE• ≤ 9.9 W @ 12 V
Operation temp:	-40 °C ... 60 °C
Weight:	1.07 kg
Dimensions:	288 x 94 x 85 mm
Supported languages:	Polish, English, Czech, French, Spanish, Dutch, German, Russian, Portuguese, Romanian, Turkish, Ukrainian, Hungarian, Vietnamese, Italian
Manufacturer / Brand:	DAHUA
Guarantee:	3 years



Side view:



Bottom view:



Memory card slot:



Camera mounting side view:



Camera connectors:



Connectors description:



See how to initialize DAHUA cameras:

:

In the kit:



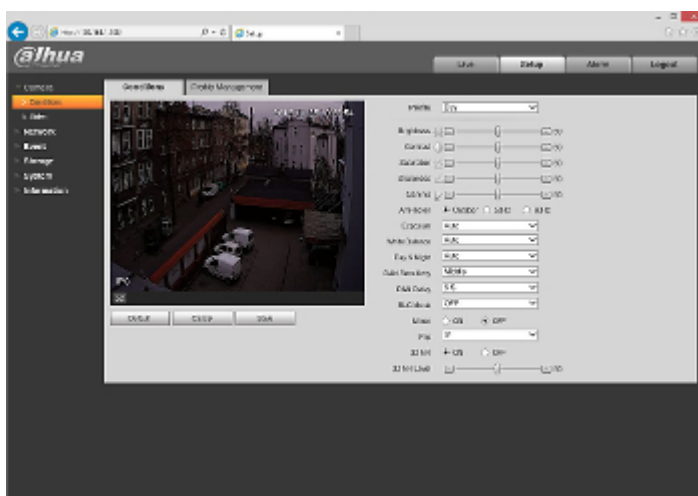
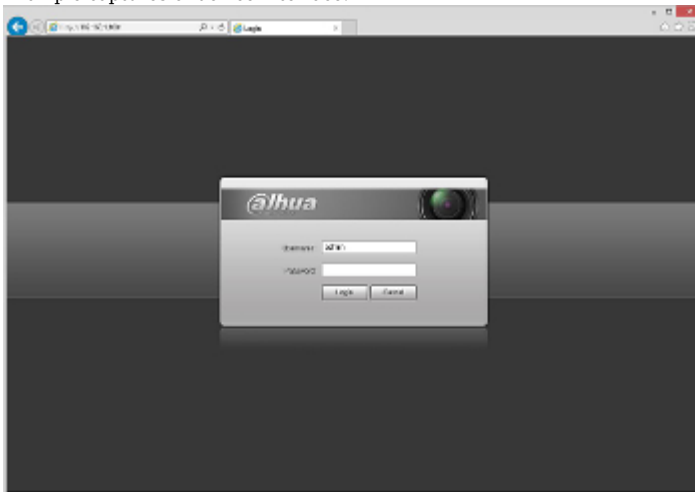
User Manual

Code: IPC-HFW5449T1-ASE-D2-0360B

IP CAMERA **IPC-HFW5449T1-ASE-D2-0360B** Full-Color Dual-Lens - 4 Mpx 3.6 mm DAHUA



Example captures of device interface:





User Manual

Code: IPC-HFW5449T1-ASE-D2-0360B

IP CAMERA **IPC-HFW5449T1-ASE-D2-0360B** Full-Color Dual-Lens - 4 Mpx 3.6 mm DAHUA

PACKAGE

Dimensions (L x W x H): 0x0x0 mm	Gross Weight: 0 kg
----------------------------------	--------------------