



User Manual

Code: ART-200

WIRELESS RADIATOR THERMOSTAT **ART-200** ABAX2 SATEL

Warning!

Please read the user manual included in this work as it contains important information related with safety of installation and use of the device.

Only persons who read the user manual may use the device.

The user manual must be kept because it may be required in the future. The device is to be used exclusively for purposes specified in this user manual.

The device must be unpacked prior to starting-up. After removing the packaging make sure the device is in working order.

If the product has defects, it should not be used until it is repaired.

The product is intended for use at home and commercial use and may not be used for other than intended use.

The manufacturer is not liable for damages resulting from not adhering to the rules contained in the user manual, therefore, we recommend to follow the aforementioned safety rules for operation and maintenance of the device. In this way you will ensure yourself safety and avoid causing damage to the device.

The manufacturer and the supplier are not liable for losses or damages arising out of the product, including financial or intangible losses, loss of profits, income, data, pleasure from use of the product or other products related with it - indirect, incidental or consequential loss or damage. The above provisions apply whether the loss or damage concerns:

1. Deterioration of quality or the lack of operation of the products or products related with it due to damage as well as the lack of access to the product when it is undergoing repair, which results in stoppage the loss of user's time or a break in business activity;
2. Improper results of operation of the product or products related with it;
3. It applies to losses and damages according to any legal category, including negligence and other losses, termination of a contract, expressed or implied guarantee and strict liability (even if the manufacturer or the supplier was notified about the possibility of occurrence of such damages).

Safety measures:

Particular attention at designing was directed to quality standards of the device where ensuring safety of operation is the most important factor.

The device must be secured against contact with caustic, staining and viscous fluids.

The device was designed in such a way that it restarts operation when power supply is restored after a break.

Attention! We recommend using protections to further protect the device from possible overvoltages in installations. Surge protectors are effective protection against accidental pass to the device voltages higher than the rated. Damages caused by pass the voltages higher than specified in manual, are not under warranty.

Turn off the device before transporting it.

Prior to connecting the device to a power source check whether the supplied voltage is consistent with rated voltage specified in the user manual.

Proper product disposal:

A marking of a crossed out waste bin indicates that the product may not be disposed together with other household waste in the entire EU. To avoid possible damage to the natural environment of health due to uncontrolled waste disposal, therefore, it should be handed over for recycling, propagating in this way sustainable use of natural resources.

To return a worn-out product, use a collection and disposal system of this type of equipment or contact a seller from whom it was purchased. He will then be recycled in an environmentally-friendly way.

The ART-200 device is used to regulate the temperature in closed rooms, which allows you to reduce energy consumption. The radiator thermostat enables remote and manual control of the radiator valve.

The ART-200 thermostat is designed to work as part of the ABAX 2 two-way wireless system and is supported by the ACU-200, ACU-280 controllers with firmware version 6.06 or newer, and the ARU-200 repeater. The thermostat can be mounted on radiator valves with M30x1.5 mm threaded connection. An adapter is supplied with the thermostat, which also allows mounting on a Danfoss RA valve.

Comfort and economic temperature settings can be changed with buttons on the thermostat, using keypads (e.g. INT-TSI touchscreen) or from the INTEGRA CONTROL mobile application.



Support:	ABAX2
Frequency band:	868 MHz ... 868.6 MHz
Radio communication range (at open area):	≤ 1000 m
Battery:	2 x LR6 (AA) - 1.5 V (not included)
Backup time:	~ 2 years
Current consumption:	<ul style="list-style-type: none"> • 98 µA (Standby mode) • max. 80 mA



User Manual

Code: ART-200

WIRELESS RADIATOR THERMOSTAT **ART-200** ABAX2 SATEL

Main features:	<ul style="list-style-type: none">• Operation modes :<ul style="list-style-type: none">- comfortable temperature- economy temperature- manual setting of valve position / temperature• The temperature can be adjusted within the range : 5 °C ... 30 °C• Remote configuration• View device status• Selection of the temperature sensor to be used - built-in or external (ABAX 2 system)• Boost Heat - quick heating function• Valve descaling function• Open window detection• Child Lock - securing the device against children• Built-in LCD display• Battery charge indicator• battery diagnostics• Bi-directional encrypted radio communication - AES• Transmission channel diversity - automatic selection of the one of 4 channels that will enable transmission without interference with other signals in the 868 MHz frequency band• Remote update of software• The "ECO" option allows to extend the battery life up to four times (only in ABAX2)• Installation on valves : M30 x 1.5 mm• In the kit :<ul style="list-style-type: none">- Danfoss RA Adapter- positioning ring for easy mounting on smaller diameter valves
Operation temp:	-10 °C ... 50 °C
Color:	White
Weight:	0.12 kg
Dimensions:	55 x 102 x 61 mm
Manufacturer / Brand:	SATEL
Guarantee:	2 years



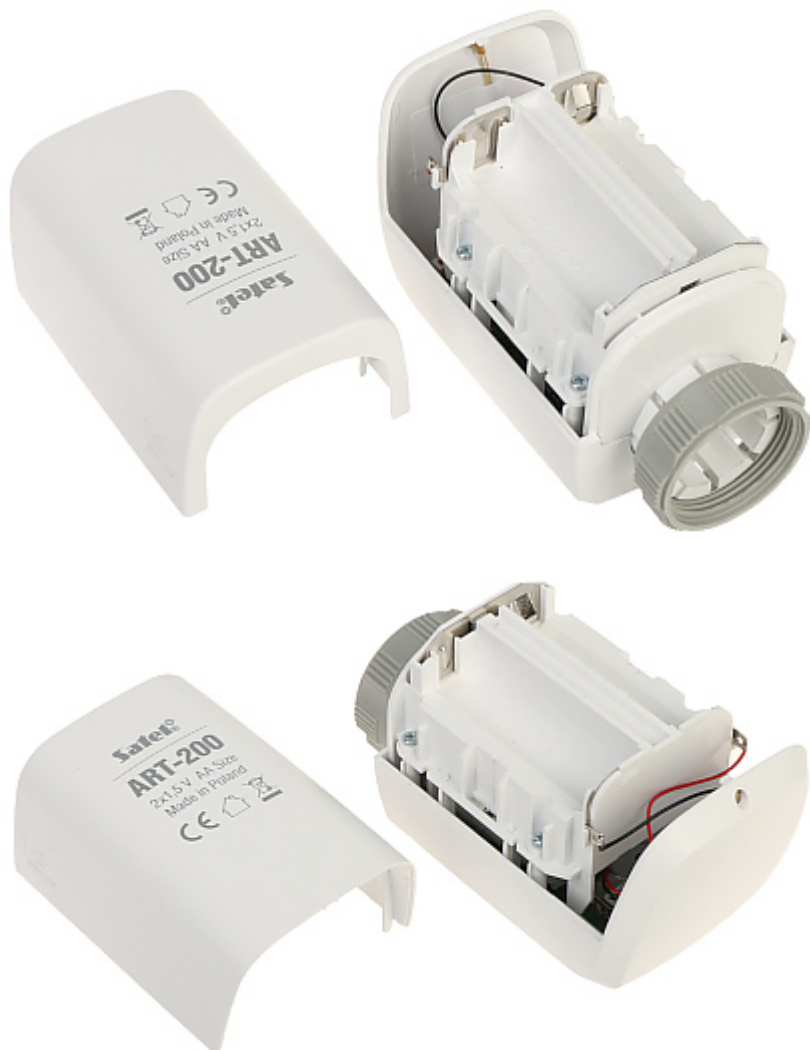
Top view:



Mounting side view:



Place for batteries 2 x 1.5V AA:



In the kit:



PACKAGE

Dimensions (L x W x H): 0x0x0 mm	Gross Weight: 0 kg
----------------------------------	--------------------



User Manual

Code: ART-200

WIRELESS RADIATOR THERMOSTAT **ART-200** ABAX2 SATEL
