



Please read the user manual included in this work as it contains important information related with safety of installation and use of the device.

The user manual must be kept because it may be required in the future. The device is to be used exclusively for purposes specified in this user manual.

The product is intended for use at home and commercial use and may not be used for other than intended use.

The manufacturer and the supplier are not liable for losses or damages arising out of the product, including financial or intangible losses, loss of profits, income, data, pleasure from use of the product or other products related with it - indirect, incidental or consequential loss or damage. The above provisions apply whether the loss or damage concerns:

- Safety measures:**

The device must be secured against contact with caustic, staining and viscous fluids.

The device was designed in such a way that it restarts operation when power supply is restored after a break.

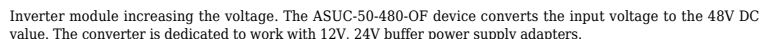
Attention! We recommend using protections to further protect the device from possible overvoltages in installations. Surge protectors are effective protection against accidental pass to the device voltages higher than the rated. Damages caused by pass the voltages higher than specified in manual, are not under warranty.

Turn off the device before transporting it.

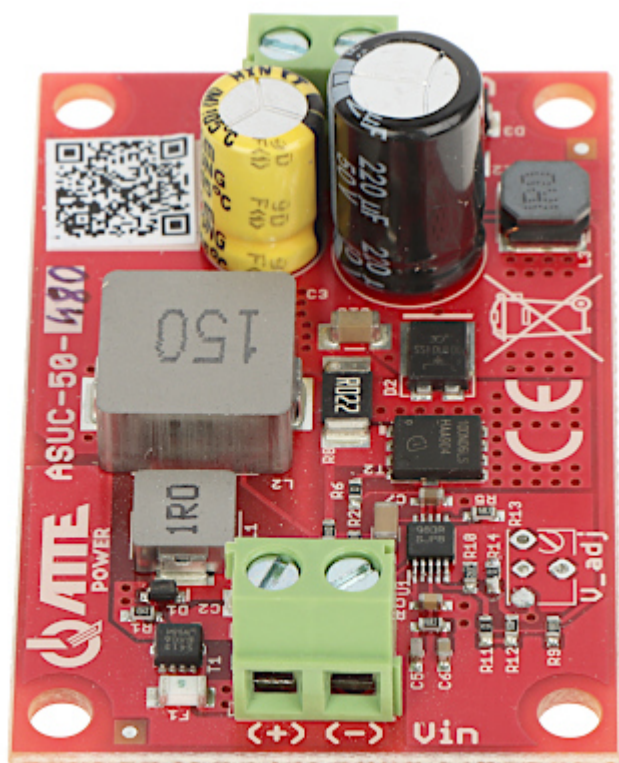
Prior to connecting the device to a power source check whether the supplied voltage is consistent with rated voltage specified in the user manual.

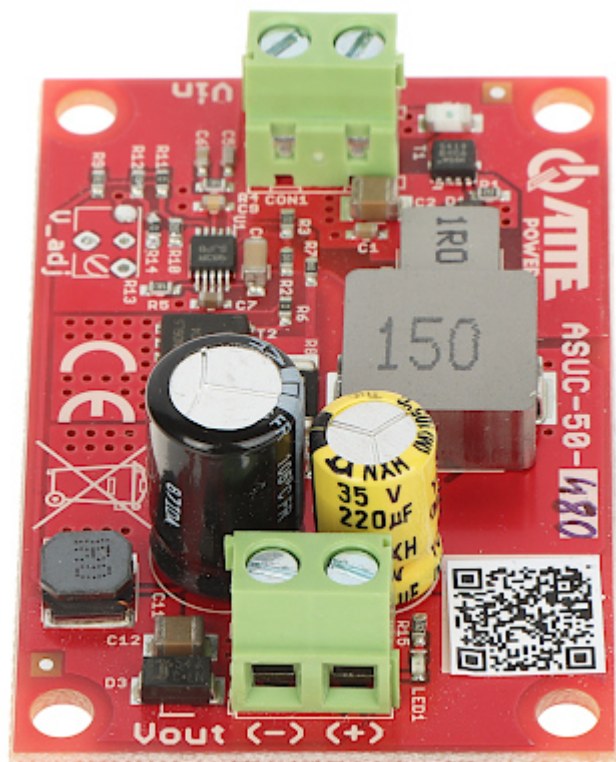
A marking of a crossed out waste bin indicates that the product may not be disposed together with other household waste in the entire EU. To avoid possible damage to the natural environment of health due to uncontrolled waste disposal, therefore, it should be handed over for recycling, propagating in this way sustainable use of natural resources.

To return a worn-out product, use a collection and disposal system of this type of equipment or contact a seller from whom it was purchased. He will then be recycled in an environmentally-friendly way.

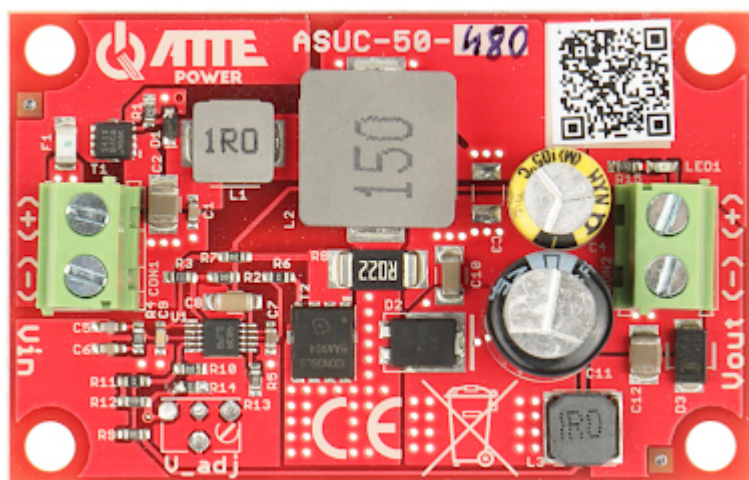


| | |
|----------------------------|--------------------------------------------------------------------------------------------------------------------------------------------------------------------------------------|
| Type: | Increasing the voltage, DC/DC |
| Number of inputs: | 1 |
| Number of outputs: | 1 |
| Power voltage: | 10 ... 30 V DC |
| Output voltage: | 48 V DC |
| Output voltage adjustment: | — |
| Power: | 50 W (max) @ 12 V DC |
| Protections: | Protection against reverse polarity of the input voltage |
| Main features: | <ul style="list-style-type: none"> • Efficiency : 93 % @ 12 V / 50 W • DC output voltage presence indication • Mounting by means of snap-on spacers |
| Application: | Powering PoE switches |
| Weight: | 0.02 kg |
| Dimensions: | 61 x 39 x 20 mm |
| Manufacturer / Brand: | ATTE |
| Guarantee: | 3 years |





Top view:



In the kit:





User Manual

Code: ASUC-50-480-OF
CONVERTER MODULE **ASUC-50-480-OF** DC/DC ATTE

PACKAGE

| | |
|----------------------------------|--------------------|
| Dimensions (L x W x H): 0x0x0 mm | Gross Weight: 0 kg |
|----------------------------------|--------------------|