

Warning!

Please read the user manual included in this work as it contains important information related with safety of installation and use of the device.

Only persons who read the user manual may use the device.

The user manual must be kept because it may be required in the future. The device is to be used exclusively for purposes specified in this user manual.

The device must be unpacked prior to starting-up. After removing the packaging make sure the device is in working order. If the product has defects, it should not be used until it is repaired.

The product is intended for use at home and commercial use and may not be used for other than intended use.

The manufacturer is not liable for damages resulting from not adhering to the rules contained in the user manual, therefore, we recommend to follow the aforementioned safety rules for operation and maintenance of the device. In this way you will ensure yourself safety and avoid causing damage to the device.

The manufacturer and the supplier are not liable for losses or damages arising out of the product, including financial or intangible losses, loss of profits, income, data, pleasure from use of the product or other products related with it - indirect, incidental or consequential loss or damage. The above provisions apply whether the loss or damage concerns:

1. Deterioration of quality or the lack of operation of the products or products related with it due to damage as well as the lack of access to the product when it is undergoing repair, which results in stoppage the loss of user's time or a break in business activity;
2. Improper results of operation of the product or products related with it;
3. It applies to losses and damages according to any legal category, including negligence and other losses, termination of a contract, expressed or implied guarantee and strict liability (even if the manufacturer or the supplier was notified about the possibility of occurrence of such damages).

Safety measures:

Particular attention at designing was directed to quality standards of the device where ensuring safety of operation is the most important factor.

The device must be secured against contact with caustic, staining and viscous fluids.

The device was designed in such a way that it restarts operation when power supply is restored after a break.

Attention! We recommend using protections to further protect the device from possible overvoltages in installations. Surge protectors are effective protection against accidental pass to the device voltages higher than the rated. Damages caused by pass the voltages higher than specified in manual, are not under warranty.

Turn off the device before transporting it.

Prior to connecting the device to a power source check whether the supplied voltage is consistent with rated voltage specified in the user manual.

Proper product disposal:

A marking of a crossed out waste bin indicates that the product may not be disposed together with other household waste in the entire EU. To avoid possible damage to the natural environment of health due to uncontrolled waste disposal, therefore, it should be handed over for recycling, propagating in this way sustainable use of natural resources.

To return a worn-out product, use a collection and disposal system of this type of equipment or contact a seller from whom it was purchased. He will then be recycled in an environmentally-friendly way.

The PROTECT-116 is a mobile recorder designed to use in coaches, city buses, busses, trams, subway, corporate and personal vehicles and special vehicles ie. lorries, police cars, prison or military cars, ambulances. The device has been specially designed so that exhibited increased resistance to oscillations and vibrations. Recorder supports the 2.5" HDD with capacity up to 2 TB.

The power cables of the PROTECT-116 are connected to the car's battery and ignition (analogous to radio receiver), so when you turn the ignition device automatically begins recording the audio-video data. Additionally the device is equipped with a power backup and during 8 seconds after power loss is still recording.





User Manual

Code: PROTECT-116
AHD, PAL, IP MOBILE DVR **PROTECT-116** 4 CHANNELS

Standard:	AHD, CVBS, TCP/IP
Video inputs:	4 pcs BNC
Video outputs:	1 pcs VGA 1 pcs CINCH 1 pcs M12, 4-pin socket
Audio inputs:	4 pcs CINCH
Audio outputs:	1 pcs CINCH
Resolution of recording video files:	1920 x 1080, 1280 x 720, 960 x 576, 720 x 576, 352 x 288
Maximal total frame rate:	<ul style="list-style-type: none">• 100 fps @ 4 x AHD 1080p,• 100 fps @ 4 x CVBS 960H,• 50 fps @ 2 x IP 1080p
Supported hard drives:	1 x 2 TB HDD / SSD 2.5 "
Memory storage for video recording:	0.9 GB/h @ 1920 x 1080
Image compression method:	H.264
GPS:	✓
G-Sensor:	✓
RS-485:	✓
RS-232:	✓
Alarm inputs / outputs:	8 / 1
SIM socket:	—
Port USB:	1 x USB 2.0
Ethernet port:	1 x RJ-45 Passive PoE
Main features:	<ul style="list-style-type: none">• Powering the cameras with 12V DC voltage directly from recorder : 4 x DC 2.1/5.5mm socket + 1 x Passive PoE• Auto recording after power on• Mirror - Mirror image• Alarms and maintenance events registration• Alarms and errors memory reading• Recording of the traveled route of the vehicle using the GPS receiver• Backup to USB drive (pendrive, external drive)• Default administrator password : 888888• Remote control• Compliance with the MIL-STD-810G standard• Automatic heating of the HDD/SSD slot allows you to start recording at temperatures from -40°C• Polish, English menu
Power supply:	8 V ... 36 V DC
Power consumption:	≤ 36 W
Operation temp:	-40 °C ... 80 °C
Permissible relative humidity:	20 % ... 95 % RH
Weight:	1.69 kg
Dimensions:	195 x 184 x 61 mm

Supported languages:	English
Guarantee:	2 years

Front view:

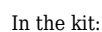
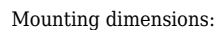


View after open the front cover:



Rear view:







User Manual

Code: PROTECT-116

AHD, PAL, IP MOBILE DVR **PROTECT-116** 4 CHANNELS

Dimensions (L x W x H): 0x0x0 mm

Gross Weight: 0 kg