



User Manual

Code: APTI-KIT-WIFI-M20D2
SURVEILLANCE KIT **APTI-KIT-WIFI-M20D2** Wi-Fi, 4 CHANNELS - 1080p

Warning!

Please read the user manual included in this work as it contains important information related with safety of installation and use of the device.

Only persons who read the user manual may use the device.

The user manual must be kept because it may be required in the future. The device is to be used exclusively for purposes specified in this user manual.

The device must be unpacked prior to starting-up. After removing the packaging make sure the device is in working order.

If the product has defects, it should not be used until it is repaired.

The product is intended for use at home and commercial use and may not be used for other than intended use.

The manufacturer is not liable for damages resulting from not adhering to the rules contained in the user manual, therefore, we recommend to follow the aforementioned safety rules for operation and maintenance of the device. In this way you will ensure yourself safety and avoid causing damage to the device.

The manufacturer and the supplier are not liable for losses or damages arising out of the product, including financial or intangible losses, loss of profits, income, data, pleasure from use of the product or other products related with it - indirect, incidental or consequential loss or damage. The above provisions apply whether the loss or damage concerns:

1. Deterioration of quality or the lack of operation of the products or products related with it due to damage as well as the lack of access to the product when it is undergoing repair, which results in stoppage the loss of user's time or a break in business activity;
2. Improper results of operation of the product or products related with it;
3. It applies to losses and damages according to any legal category, including negligence and other losses, termination of a contract, expressed or implied guarantee and strict liability (even if the manufacturer or the supplier was notified about the possibility of occurrence of such damages).

Safety measures:

Particular attention at designing was directed to quality standards of the device where ensuring safety of operation is the most important factor.

The device must be secured against contact with caustic, staining and viscous fluids.

The device was designed in such a way that it restarts operation when power supply is restored after a break.

Attention! We recommend using protections to further protect the device from possible overvoltages in installations. Surge protectors are effective protection against accidental pass to the device voltages higher than the rated. Damages caused by pass the voltages higher than specified in manual, are not under warranty.

Turn off the device before transporting it.

Prior to connecting the device to a power source check whether the supplied voltage is consistent with rated voltage specified in the user manual.

Proper product disposal:

A marking of a crossed out waste bin indicates that the product may not be disposed together with other household waste in the entire EU. To avoid possible damage to the natural environment of health due to uncontrolled waste disposal, therefore, it should be handed over for recycling, propagating in this way sustainable use of natural resources.

To return a worn-out product, use a collection and disposal system of this type of equipment or contact a seller from whom it was purchased. He will then be recycled in an environmentally-friendly way.

The surveillance kit includes 4 IP Cameras, 12" Monitor with Wi-Fi NVR, USB Mouse, and 4 Power Adaptors DC 12V/500mA for independent camera power supply and Power Adaptor DC 12V/2A for monitor with recorder power supply. The kit has been pre-configured in a way that allows to start working immediately after removing from the box and connecting the power supply. The H.265 / H.264 video compression standard using to record video data, allows to get the best possible quality of recorded image at minimal network transfer and disk storage capacity.

Network Video Recorder allowing to operate with Wi-Fi Apti cameras supported 802.11 b/g/n standards. The menu options layout has been designed for all users, even beginners can easy navigate and change parameters in DVR settings without any problem.

IP camera with efficient H.264 / H.265 image compression algorithm for clear and smooth video streaming at maximal resolution of 1920 x 1080 (1080p). The used Wi-Fi module allows for remote communication up to several dozen meters (the distance depends on obstacles between the antennas). Camera is according to IP67 Index of Protection norm.



Screen size:	12 "
Resolution:	1920 x 1080 px @ 60 Hz , 1280 x 1024 px @ 60 Hz , 1280 x 720 px @ 60 Hz , 1024 x 768 px @ 60 Hz
Aspect ratios:	16 : 9
Speakers built-in:	✓
Housing type:	Plastic

Recorder:

Standard:	TCP/IP
Supported resolutions:	max. 8 Mpx - 3072 x 2592 px
Audio support:	4 Channels - Audio from cameras
Video outputs:	—
Audio inputs:	—
Audio outputs:	—
Image compression method:	H.265+ / H.265 / H.264+ / H.264
Supported hard drives:	1 x 8 TB SATA 2.5 "
Recording modes:	Manual, Motion Detection, Schedule
Network protocols:	TCP/IP, HTTP, UPnP, DNS, NTP, SMTP, DHCP, FTP, DDNS, RTP, RTSP, RTCP, P2P
External storage devices backup:	Records backup at (.avi) format to USB (pendrive)



User Manual

Code: APTI-KIT-WIFI-M20D2
SURVEILLANCE KIT **APTI-KIT-WIFI-M20D2** Wi-Fi, 4 CHANNELS - 1080p

Searching and playback the records:	Records searching: timeline or file list. Playback: forward, fast Channels played simultaneously : 1 @ 8 / 5 / 4 Mpx, 2 @ 3 Mpx, 4 @ 1080p / 960p / 720p
Network functions:	Network Client Software and IE browser: live view, playback and backup of the records, configuration of the recorder parameters Full support via network, Remote records copying, Web Server built-in Wi-Fi : 2.4 GHz - APTI cameras support, Range : 300 m (open area)
ONVIF:	2.4
Mobile phones support:	Port no.: 554 or access by a cloud (P2P) • Android: Free application BitVision • iOS (iPhone): Free application BitVision
Default IP address:	192.168.1.168
Default admin user / password:	admin / 12345
Web browser access ports:	80, 5000, 554
PC client access ports:	80, 5000, 554
Mobile client access ports:	80, 5000, 554
Port ONVIF:	80
Alarm inputs / outputs:	—
Port USB:	1 pcs USB 2.0
PTZ control:	—
Motion Detection:	Split the screen into zones : 22 x 18 motion zones
Mouse support:	✓
IR remote controller in the set:	—
Main features:	Comparison of faces with images from the database (1 database with max. 10 images)

Recorder + Monitor:

Power supply:	12 V DC / 2 A (power adapter included)
Weight:	0.94 kg
Dimensions:	• 288 x 255 x 140 mm (with stand) • 288 x 207 x 35 mm (without stand)
Supported languages:	Polish, English, Bulgarian, Czech, French, Greek, Spanish, Dutch, German, Portuguese, Russian, Romanian, Turkish, Hungarian, Italian

Camera:

Standard:	TCP/IP
Sensor:	1/2.9 " Progressive Scan CMOS
Matrix size:	2.1 Mpx
Resolution:	1920 x 1080 - 1080p
Operation modes:	• Main stream : 1920 x 1080 • Sub stream : 720 x 480
Lens:	3.6 mm



User Manual

Code: APTI-KIT-WIFI-M20D2
SURVEILLANCE KIT **APTI-KIT-WIFI-M20D2** Wi-Fi, 4 CHANNELS - 1080p

View angle:	79 °
Range of IR illumination:	25 m
RS-485 interface:	—
Memory card slot:	—
Image compression method:	H.265 / H.265+ / H.264 / H.264+
Alarm inputs / outputs:	—
Audio:	Microphone built-in
Main stream frame rate:	15 fps @ 1080p
Network interface:	Wi-Fi - 2.4 GHz, IEEE 802.11 b/g/n
Network protocols:	TCP/IP, ICMP, RTP, RTSP, RTCP
ONVIF:	—
Mobile phones support:	—
Default IP address:	192.168.1.168
Default admin user / password:	admin / - The administrator password should be set at the first start
Web browser access ports:	—
PC client access ports:	—
Mobile client access ports:	—
Port ONVIF:	—
WEB Server:	—
Max. number of on-line users:	—
RTSP URL:	—
Main features:	<ul style="list-style-type: none">• Wi-Fi module - IEEE 802.11 b/g/n, Range : 300 m (open area) ; 3 dBi Antenna - SMA socket• WB - White Balance• Day/night mode• ICR - Movable InfraRed filter• Flicker Control - The technology eliminates the tiring eyes flickering image effect• Configurable: brightness, contrast, saturation• Motion Detection• Configurable Privacy Zones• Mirror - Mirror image• Sharpness - sharper image outlines• RESET button
Power supply:	12 V DC / 300 mA
Power consumption:	≤ 3.6 W
Housing:	Dome - Metal
Color:	White
Vandal-proof:	✓
"Index of Protection":	IP67

Operation temp:	-20 °C ... 60 °C
Weight:	0.33 kg
Dimensions:	Ø 72 x 98 mm
Supported languages:	—

General information:

Cameras amount:	4 pcs
Power adapter:	4 pcs : 12 V / 500 mA , 1 pcs : 12 V / 2 A
Connecting cable:	—
Manufacturer / Brand:	APTI
Guarantee:	2 years

Recorder with monitor:



Front view:



Rear view:





Connectors:



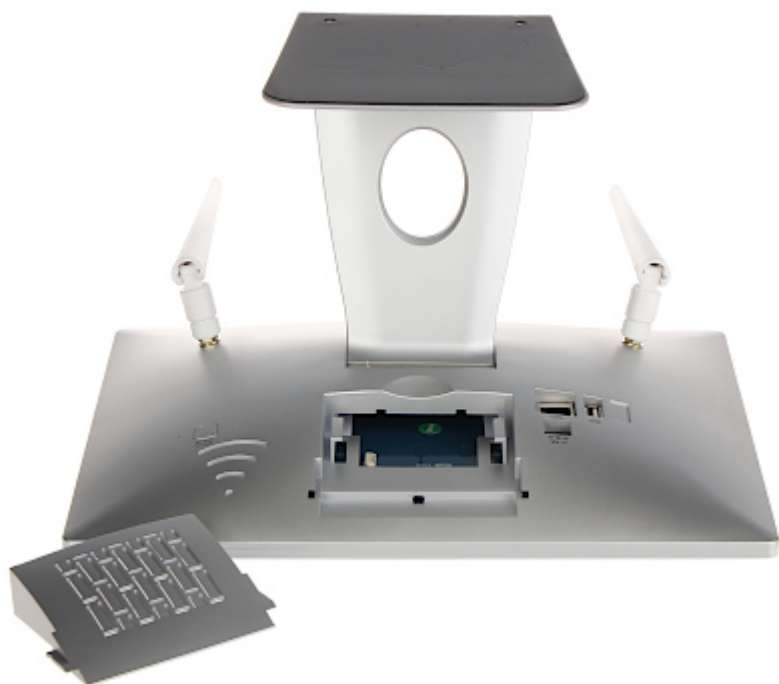
ON/OFF button:



The monitor stand allows to change the position of the screen from horizontal to vertical:



The device is equipped with SATA 2.5" HDD mobile rack:



CAMERA:



Camera mounting side view:





PACKAGE

Dimensions (L x W x H): 0x0x0 mm	Gross Weight: 0 kg
----------------------------------	--------------------