

Warning!

Please read the user manual included in this work as it contains important information related with safety of installation and use of the device.

Only persons who read the user manual may use the device.

The user manual must be kept because it may be required in the future. The device is to be used exclusively for purposes specified in this user manual.

The device must be unpacked prior to starting-up. After removing the packaging make sure the device is in working order.

If the product has defects, it should not be used until it is repaired.

The product is intended for use at home and commercial use and may not be used for other than intended use.

The manufacturer is not liable for damages resulting from not adhering to the rules contained in the user manual, therefore, we recommend to follow the aforementioned safety rules for operation and maintenance of the device. In this way you will ensure yourself safety and avoid causing damage to the device.

The manufacturer and the supplier are not liable for losses or damages arising out of the product, including financial or intangible losses, loss of profits, income, data, pleasure from use of the product or other products related with it - indirect, incidental or consequential loss or damage. The above provisions apply whether the loss or damage concerns:

1. Deterioration of quality or the lack of operation of the products or products related with it due to damage as well as the lack of access to the product when it is undergoing repair, which results in stoppage the loss of user's time or a break in business activity;
2. Improper results of operation of the product or products related with it;
3. It applies to losses and damages according to any legal category, including negligence and other losses, termination of a contract, expressed or implied guarantee and strict liability (even if the manufacturer or the supplier was notified about the possibility of occurrence of such damages).

Safety measures:

Particular attention at designing was directed to quality standards of the device where ensuring safety of operation is the most important factor.

The device must be secured against contact with caustic, staining and viscous fluids.

The device was designed in such a way that it restarts operation when power supply is restored after a break.

Attention! We recommend using protections to further protect the device from possible overvoltages in installations. Surge protectors are effective protection against accidental pass to the device voltages higher than the rated. Damages caused by pass the voltages higher than specified in manual, are not under warranty.

Turn off the device before transporting it.

Prior to connecting the device to a power source check whether the supplied voltage is consistent with rated voltage specified in the user manual.

Proper product disposal:

A marking of a crossed out waste bin indicates that the product may not be disposed together with other household waste in the entire EU. To avoid possible damage to the natural environment of health due to uncontrolled waste disposal, therefore, it should be handed over for recycling, propagating in this way sustainable use of natural resources.

To return a worn-out product, use a collection and disposal system of this type of equipment or contact a seller from whom it was purchased. He will then be recycled in an environmentally-friendly way.

The MS-6818 meter allows to identify and track cables placed in walls or buried underground. The meter's method of operation also allows the tracking of the position of other metal installations, such as water and sewage pipes, elements of heating installations (including floor installations) and other. In addition, the MS-6818 meter also allows to detect faults and short circuits of the electrical cables.

The device enables operation both in the disconnected circuit and in the presence of mains voltage (AC and DC). In the case of a mains voltage presence, both the transmitter and the receiver will display on the screens a warning about working on a live circuit. The transmitter also has the ability to measure the voltage in the circuit in the range of 12V ... 400V AC/DC. The maximum range from which the receiver is able to locate the wire is 2m, which also allows to determine the position of installations located quite deep below the surface of the ground.

It is possible to use a larger number of the MS-6818 meters simultaneously for example to establish rooms supplied from different phases of the electrical network. Transmitters have the ability to transmit different signals that are identified by the receiver. Both the transmitter and the receiver identify these signals using letters: F, E, H, D, L, C, O, A.



Output signal:	125 kHz - Transmitter
AC voltage measurement:	12 ... 400 V
DC voltage measurement:	12 ... 400 V
Main features:	<ul style="list-style-type: none"> • Wire continuity test, • Searching the place of wire damage, • 3 operating modes: unipolar, bipolar, loop, • The ability to identify any metal elements of electrical, plumbing, heating installations, etc., • Detection of the cable in the wall and underground at depth up to 2m, • The possibility of operating under mains voltage and in a circuit without voltage, • 8 transmission codes set on the transmitter and distinguished by the receiver, • Built-in buzzer allows to operate the device without looking at the screen
Power supply:	<ul style="list-style-type: none"> • Transmitter : 9V, type 6LR61 battery - included • Receiver : 6 x 1.5V, type AAA/LR03 battery - In the kit
Weight:	0.37 kg - Transmitter 0.27 kg - Receiver
Dimensions:	190 x 90 x 41 mm - Transmitter 241 x 79 x 38 mm - Receiver
Guarantee:	2 years

Front view:
Transmitter:



Receiver:



Transmitter connectors:



Rear view:
Transmitter:



Receiver:



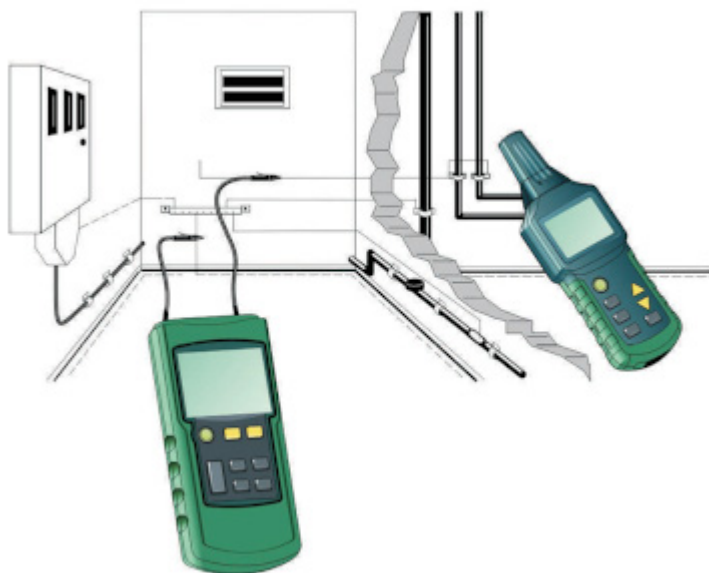
In the kit:

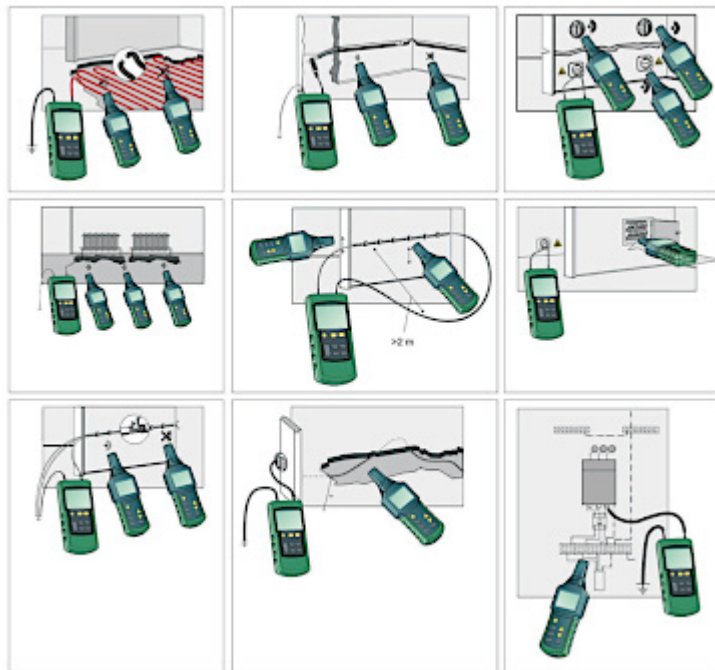


Device is secured by handy case:



Example of application:





PACKAGE

Dimensions (L x W x H): 0x0x0 mm	Gross Weight: 0 kg
----------------------------------	--------------------