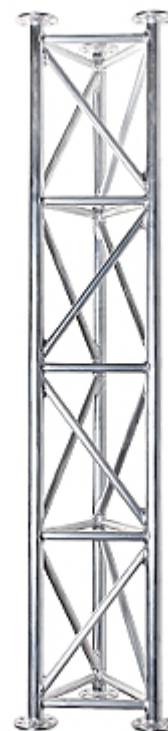


Code: MK-1.5

ALUMINUM TRUSS MAST **MK-1.5**



The MK-1.5 mast is a solid, lightweight aluminum construction with the possibility of entering it by a qualified installer. It can be placed with only one hand.

No need for guy-wires makes the mast requires little space and has a beneficial effect on aesthetics.

The mast is designed for mounting light devices such as CCTV cameras, Wi-Fi, LTE antennas or small radio links in the first wind zone (according to EUROCODE standards for Poland). The technical calculations available in the downloads are only a reference for designers. The accompanying documentation should not be considered as installation guidelines.

In the case of less typical installation locations and loads, we encourage you to contact us to verify your needs in technical terms.

Height of the mast:	1.5 m
Number of sections:	1
Wall thickness:	1.5 mm
Material:	Aluminum
Possibility to combine to each other:	✓
Construction:	Truss of triangular cross-section : 250 x 250 x 250 mm
Supporting pillars:	Aluminum tube Ø 35 mm
Main features:	<ul style="list-style-type: none"> • No need for guy-wires up to 6 m height • The MK-1.5/POD base application enables laying a mast • Possibility of entering the assembled mast by the person weighing up to 100 kgs with winds up to 5 m/s • The possibility of transport in the trunk of a passenger car
Weight:	5.05 kg
Manufacturer / Brand:	DELTA
Guarantee:	3 years