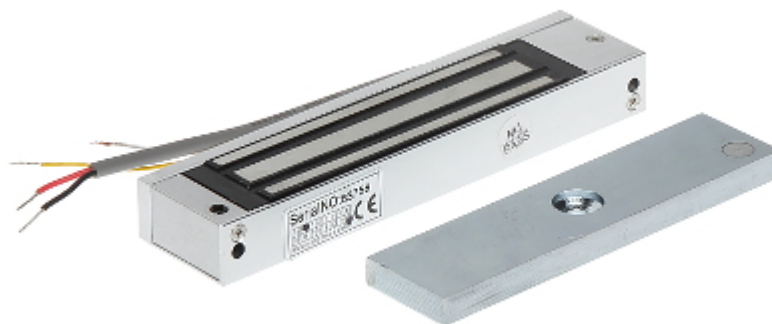


Code: ZE-180

## ELECTROMAGNETIC LOCK **ZE-180**

Electromagnetic lock, surface, single. With a simple design and modern manufacturing technology, is a reliable device to lock doors and gates. It operates reversibly - it is open when power is off. Force an entry closed by lock requires the use of force of > 180 kg. The lock is composed of two elements: electromagnet (usually mounted in the frame) and lock plate (usually mounted in the door). Error free operation of the lock is a result of lack the mechanical elements, which after some time become damaged. Device is designed for indoor use only.



Load capacity:	180 kg
Rated voltage:	12 V DC
Current consumption:	500 mA
Main features:	<ul style="list-style-type: none"> <li>• The NC output indicating opening the door</li> <li>• Device is designed for indoor use only</li> </ul>
Weight:	0.965 kg
Dimensions:	174.4 x 41.2 x 33.1 mm
Guarantee:	2 years