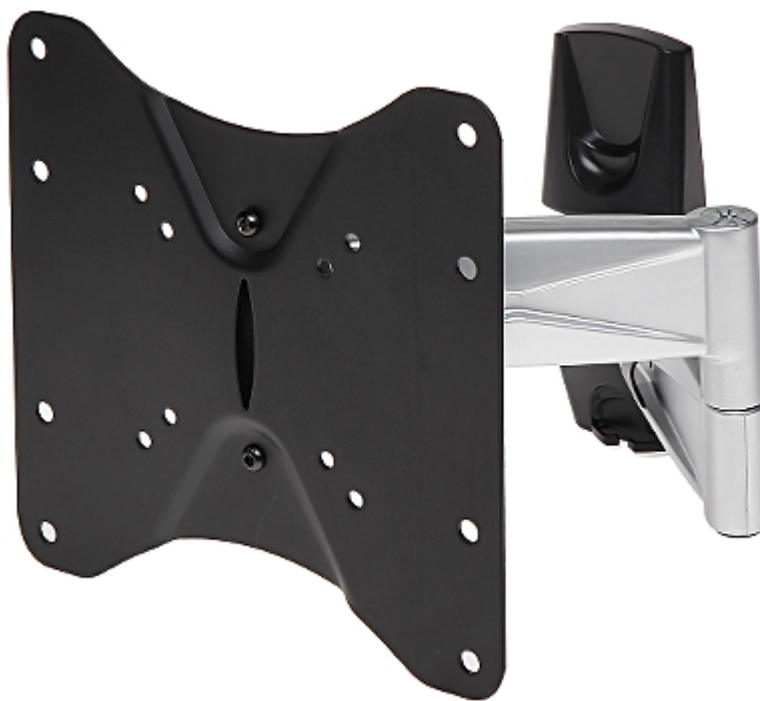


Code: BS-104

TV OR MONITOR MOUNT **BS-104**

The BS-104 wall mount has been designed to place a modern LCD or plasma monitor/television on a wall. The mount enables easy tilt adjustment and horizontal rotation. The GS mark ensures that the manufacturing process is continuously monitored, and the quality of the product is tested in accordance with the requirements for this GS mark. The GS abbreviation comes from the words "Geprüfte Sicherheit", which translates to "proven safety".



Mounting standard:	VESA 75, 100, 200, 200x100
Screen size range:	17 " ... 37 "
Bearing capacity:	25 kg
Distance from mounting surface:	55 ... 440 mm from wall
Color:	Black
Certificates:	TÜV Rheinland
Tilt adjustment:	-10 ° ... 15 °
Horizontal rotation:	-90 ° ... 90 °
Rotation in the plane of the screen:	—
Dimensions:	230 x 230 x 440 mm
Weight:	2.308 kg
Guarantee:	2 years