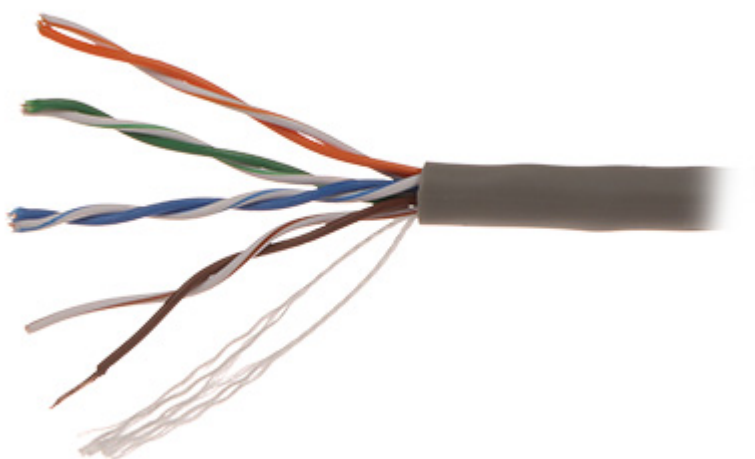


Code: DS-PL-5E

TWISTED-PAIR CABLE **DS-PL-5E** Hikvision

The DS-PL-5E twisted-pair cable is designed to professional applications of installation. For convenience, cable is marking with length counter printed with 1 m distance step.

The cable complies with the CPR No. 305/2011 directive and meets the requirements of the PN-EN 50575 European standard which specifies requirements in fire conditions, test methods and rating of cables used as building material. The cable has a Declaration of Performance and a CE marking, which confirm its compliance with the guidelines of the CPR regulation.



In section:	305 m . Price for 1m when buying a whole roll
Type:	UTP cat. 5e
Inner conductor:	Ø 0.45 mm AWG 25, Wire Cu=99.95%
Resistance:	≤ 12 Ω / 100 m
Shield:	—
Outer coating:	Ø 4.7 mm PVC
Coating color:	Gray
Main features:	<ul style="list-style-type: none"> • Working voltage: 57V • Class CPR: Eca • Excellent performance in the Fluke 80-meter permanent link test while working continuously at 50°C high temperature • Excellent performance in the Fluke 90-meter channel test
Supported norms:	ANSI/TIA-568.2-D, IEC61156, ISO/IEC11801, RoHS 2.0
Operation temp:	-20 °C ... 70 °C
Manufacturer / Brand:	Hikvision
Guarantee:	5 years