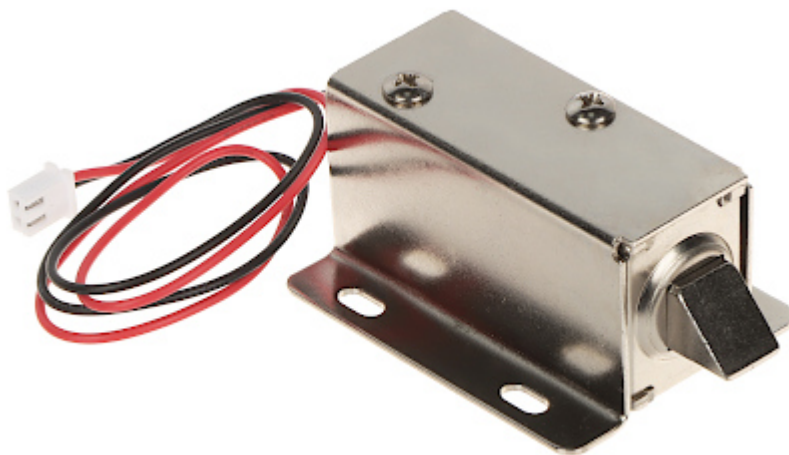


Code: ATLO-DT-L09

ELECTROMAGNETIC CABINET LOCK **ATLO-DT-L09**

The ATLO-DT-L09 cabinet lock allows for convenient and safe management of access to cabinets or deposit boxes in places such as: airports, shopping centers, swimming pools, gyms, sports halls, etc.

Due to its construction, the lock remains closed in the event of a power failure.



Rated voltage:	12 V DC
Current consumption:	1.6 A
Application:	right-side door / left-side door
Ratched lock:	—
Memory function:	—
Reverse action:	—
Clearance adjustment:	—
Main features:	<ul style="list-style-type: none"> • The lock remains closed when it is not powered - bolt extended • Bolt slide out distance : 10.5 mm
Allowable uninterrupted operation time:	≤ 10 s
Weight:	0.15 kg
Dimensions:	54 x 42 x 28 mm
Manufacturer / Brand:	ATLO
Guarantee:	2 years