

Code: ATLO-P2IP4-TUYA-V2

WI-FI SMART PLUG **ATLO-P2IP4-TUYA-V2** Wi-Fi, Tuya Smart

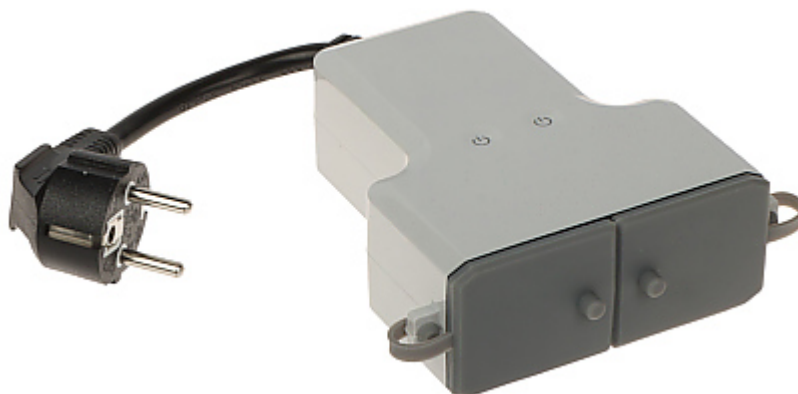
The ATLO-P2IP4-TUYA-V2 Wi-Fi Smart Plug allows to control the devices connected to it using the mobile application. For proper functioning of the device, it is necessary to connect it to the Wi-Fi network with Internet access.

The product is adapted to work outdoors.

In addition to direct control, the device has the ability to program operation schedules and linkage to various system events. Voice control allows you to control the device via voice commands from Amazon Alexa or the Google Assistant (Internet access required).

Tuya is an international home automation platform that connects thousands of products made by different manufacturers. The system can support all the most popular communication protocols such as Wi-Fi, Zigbee, Bluetooth. The platform also allows devices to be shared by more users.

Attention! Controlling the device and schedule settings is possible if the device has access to the Internet.



Rated voltage:	90 ... 250 V, 50 / 60 Hz
Maximal total load:	3680 W
Total maximal current:	16 A
Number of outlets:	2 pcs
Socket type:	CEE 7/3 (Schuko)
Grounding:	✓
Wireless:	Wi-Fi, 2.4 GHz - IEEE 802.11 b/g/n
Mobile phones support:	<ul style="list-style-type: none"> • The Tuya Smart free application on Android • The Tuya Smart free application on iOS
Main features:	<ul style="list-style-type: none"> • schedule, • timer, • remote access, • voice control • Easy operation • ON/OFF button • STATUS indicator
Housing:	Plastic
"Index of Protection":	IP66
Color:	Gray
Operation temp:	-20 °C ... 60 °C
Weight:	0.29 kg
Dimensions:	118 x 154 x 43 mm



DATA SHEET

Manufacturer / Brand:	ATLO
Guarantee:	2 years

