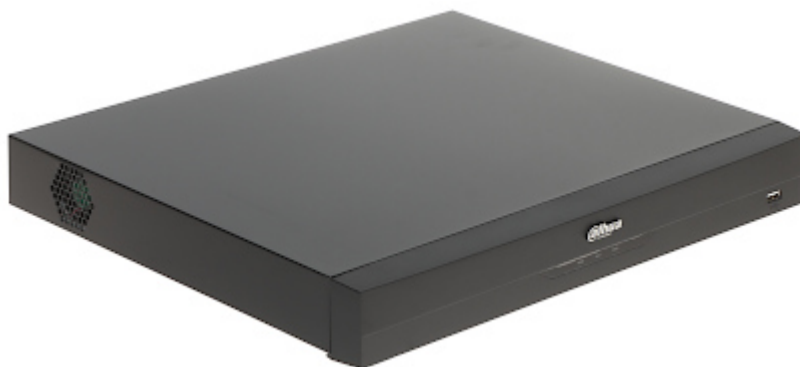


Code: NVR5232-16P-EI

## NVR **NVR5232-16P-EI** 32 CHANNELS, 16 PoE WizSense DAHUA

NVR equipped with advanced functions of intelligent image analysis.



Standard:	TCP/IP
Supported resolutions:	max. 32 Mpx
Video outputs:	1 pcs HDMI 4K 1 pcs VGA
Audio support:	<ul style="list-style-type: none"> <li>• 32 Channels - Audio from cameras</li> <li>• Bi-directional audio streaming support</li> </ul>
Audio inputs:	1 pcs CINCH
Audio outputs:	1 pcs CINCH
Image compression method:	Smart H.265+ / H.265 / Smart H.264+ / H.264 / MJPEG
Bitrate:	max. 384 Mbps
Supported hard drives:	2 x 16 TB SATA
Recording modes:	Manual, Sensor, Motion detection, Schedule
External storage devices backup:	Backup to USB drive (pendrive, external drive)
Searching and playback the records:	<ul style="list-style-type: none"> <li>• Records searching: by time and events type. Records playback: forward, backward, fast, slow</li> <li>• Advanced searching (to the one second accuracy)</li> <li>• AcuPick support - technology that uses artificial intelligence on both front-end and back-end to search through massive amounts of video data to quickly locate targets with high precision</li> <li>• Smart Playback function</li> <li>• Records playback from max. 16 channels in the same time @ 4 Mpx (without AI)</li> <li>• Records playback from max. 12 channels in the same time @ 4 Mpx (AI)</li> </ul>
Network interface:	1 x RJ-45 10/100/1000 Base-TX
Network functions:	Full support via network, Remote records copying, Web Server built-in
Network protocols:	HTTP, HTTPS, TCP/IP, IPv4/IPv6, RTSP, UDP, SNMP, NTP, DHCP, DNS, SMTP, UPnP, IP Filter, PPPoE, FTP, DDNS, Alarm Server, IP Search, Multicast, P2P, Auto Register, iSCSI
ONVIF:	21.12



# DATA SHEET

Default IP address:	192.168.1.108
Default admin user / password:	admin / - The administrator password should be set at the first start
Mobile phones support:	Port no.: 37777 or access by a cloud (P2P) <ul style="list-style-type: none"><li>• Android: Free application <a href="#">DMSS</a></li><li>• iOS (iPhone): Free application <a href="#">DMSS</a></li></ul> See how to configure the P2P function in Dahua recorders and how to enable the mobile application
Web browser access ports:	80, 37777
PC client access ports:	37777
Mobile client access ports:	37777
RTSP URL:	<ul style="list-style-type: none"><li>• rtsp://admin:haslo@192.168.1.108:554/cam/realmonitor?channel=1&amp;subtype=0 - Main stream</li><li>• rtsp://admin:haslo@192.168.1.108:554/cam/realmonitor?channel=1&amp;subtype=1 - Sub stream</li></ul>
USB:	<ul style="list-style-type: none"><li>• 1 pcs USB 2.0</li><li>• 1 pcs USB 3.0</li></ul>
Serial ports:	RS-485, RS-232
Alarm inputs / outputs:	4 / 2
PTZ control:	<ul style="list-style-type: none"><li>• IP Speed Dome Cameras</li><li>• RS-485 - PELCO-D/P and others</li></ul>
Motion Detection:	✓
Intelligent Image Analysis:	✓
Main features:	<ul style="list-style-type: none"><li>• Intelligent Image Analysis : crossing the line (tripwire), intrusion, face detection</li><li>• SMD PLUS - searching for an object classified as: human, motor vehicle</li><li>• Filtering of false alarms based on the recognition of persons and vehicles</li><li>• Face recognition</li><li>• Face analysis: determination of sex, age and characteristic elements of appearance (glasses, facial hair, mask)</li><li>• Support for up to 20 face databases, including 20 000 face images</li><li>• In the base other than face photography, can also be stored such information as: name, sex, date of birth, nationality, address, ID number</li><li>• Intelligent face search by metadata of different targets or uploading pictures of faces to the device and comparing them with recorded faces by similarity</li><li>• Privacy zones</li><li>• Cooperation with POS (Point of Sale) terminals</li></ul> <p>Functions implemented in cooperation between the recorder and cameras that support these functions :</p> <ul style="list-style-type: none"><li>• ANPR</li><li>• Authorized and unauthorized license plate lists: up to 20 000 records</li><li>• counting people / vehicles</li><li>• crowd gathering estimation</li><li>• heat map</li><li>• metadata handling - automatic photo taking and collection of information enabling the subsequent identification of people and vehicles that triggered the alarm (clothing, silhouette, face, features of motor and non-mechanical vehicles)</li></ul>
Mouse support:	✓
IR remote controller in the set:	—



# DATA SHEET

Switch PoE:	16-port PoE Switch built-in, 25.5 W / Channel - PoE (802.3af/at) + ePoE Ports 1-8 support ePoE
Maximum total switch load:	130 W
Power supply:	100 ... 240 V AC / 47 ... 63 Hz
Power consumption:	max. 10 W (without HDD)
Operation temp:	-10 °C ... 55 °C
Weight:	2.62 kg
Dimensions:	375 x 329 x 53 mm
Supported languages:	Polish, English, Bulgarian, Czech, Finnish, Greek, Romanian, Serbian, Slovenian, Hungarian
Manufacturer / Brand:	DAHUA
Guarantee:	<b>3 years</b>