

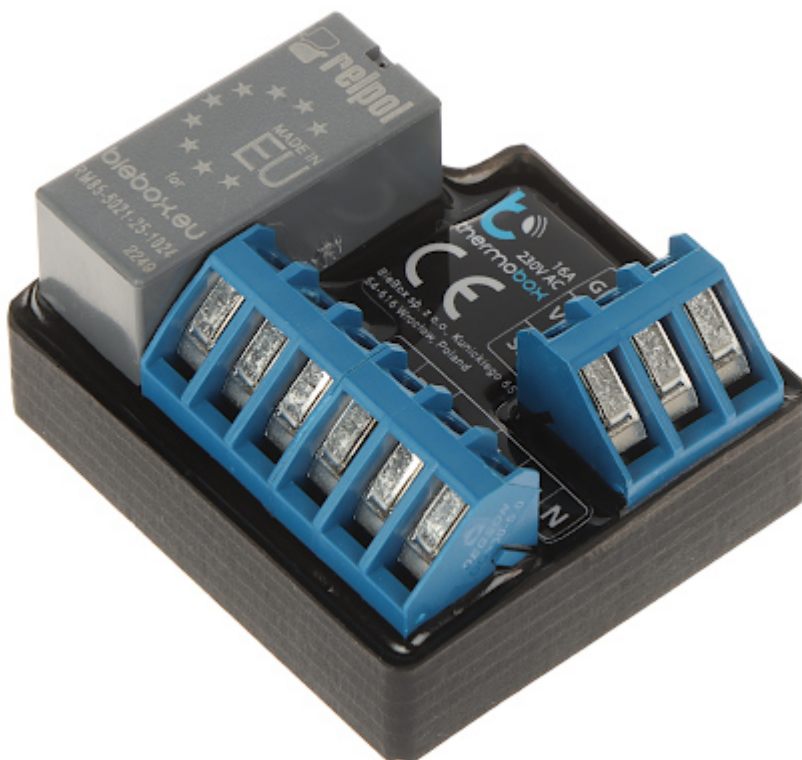
Code: THERMOBOX/BLEBOX

## SMART THERMOSTAT **THERMOBOX/BLEBOX** Wi-Fi, 230 V AC

The Wi-Fi THERMOBOX/BLEBOX smart thermostat allows you to control the heating devices connected to it using a physical switch, a web browser, an external BleBox µWiFi controller or the wBox mobile application. To work with full functionality, the device requires connection to a home Wi-Fi network. Controlling BleBox devices via the cloud requires additionally connecting the home network to the Internet and enabling the "Remote access" function in the device configuration.

Beyond direct control, the device has the ability to program the on and off schedule and linking to different system events. Voice control allows you to control the device via voice commands from Amazon Alexa or the Google Assistant (Internet access required). Modern solutions used in devices allow you to receive notifications from the wBox mobile application dedicated to smartphones and tablets with iOS and Android systems. In the application, it is possible to display interactive graphs of changes in measured values (annual history).

**Attention!** Controlling the device with a physical switch is done by shorting / opening the IN contact to the neutral wire. The device can operate with monostable (momentary) push-buttons. Depending on the switches used, the way of invoking the action for each device should be properly configured.



Application:	switching heating devices on/off
Rated voltage:	230 V AC
Maximal total load:	3680 W / 3680 VA
Total maximal current:	16 A
Number of inputs:	1
Number of outputs:	1
Connector type:	screw terminals
Wireless:	Wi-Fi, 2.4 GHz - IEEE 802.11g
Mobile phones support:	<ul style="list-style-type: none"> <li>The <a href="#">wBox</a> free application on Android</li> <li>The <a href="#">wBox</a> free application on iOS</li> </ul>

Main features:	<ul style="list-style-type: none"> <li>• Local control by physical button,</li> <li>• schedule,</li> <li>• timer,</li> <li>• sunrise and sunset mode,</li> <li>• remote access,</li> <li>• voice control,</li> <li>• µWiFi technology support,</li> <li>• Waterproof probe - the ability to measure water temperature</li> <li>• Maximum number of connected probes : 2 - main probe (included), optional safety probe,</li> <li>• Measurement range : -55 ... 125 °C</li> <li>• Measuring accuracy : 0.5 °C ( -10 ... 85 °C )</li> <li>• Autonomous operation</li> <li>• self test feature</li> <li>• Boost mode - heat up or cool down faster for a specific period of time</li> </ul>
Housing:	Plastic
"Index of Protection":	IP20
Color:	Black
Operation temp:	-20 °C ... 50 °C
Weight:	0.07 kg
Dimensions:	<ul style="list-style-type: none"> <li>• 47 x 42 x 22 mm</li> <li>• Ø 6 x 30 mm - Probe</li> <li>• 1 m - Length of the cable (Probe)</li> </ul>
Manufacturer / Brand:	BleBox
Guarantee:	2 years