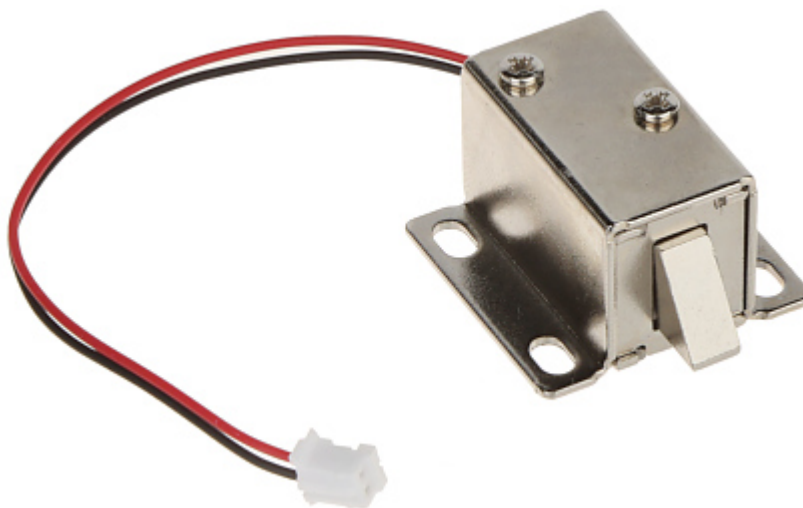


Code: DT-306

## ELECTROMAGNETIC CABINET LOCK **DT-306**

The DT-306 cabinet lock allows for convenient and safe management of access to cabinets or deposit boxes in places such as: airports, shopping centers, swimming pools, gyms, sports halls, etc.

Due to its construction, the lock remains closed in the event of a power failure.



Rated voltage:	12 V DC
Current consumption:	0.4 A
Application:	right-side door / left-side door
Ratched lock:	—
Memory function:	—
Reverse action:	—
Clearance adjustment:	—
Main features:	<ul style="list-style-type: none"> <li>• The lock remains closed when it is not powered - bolt extended</li> <li>• Opening with a voltage impulse : &lt; 1 s ... max. 15 s</li> </ul>
Allowable uninterrupted operation time:	≤ 15 s
Weight:	0.3 kg
Dimensions:	33 x 28 x 19 mm
Guarantee:	2 years