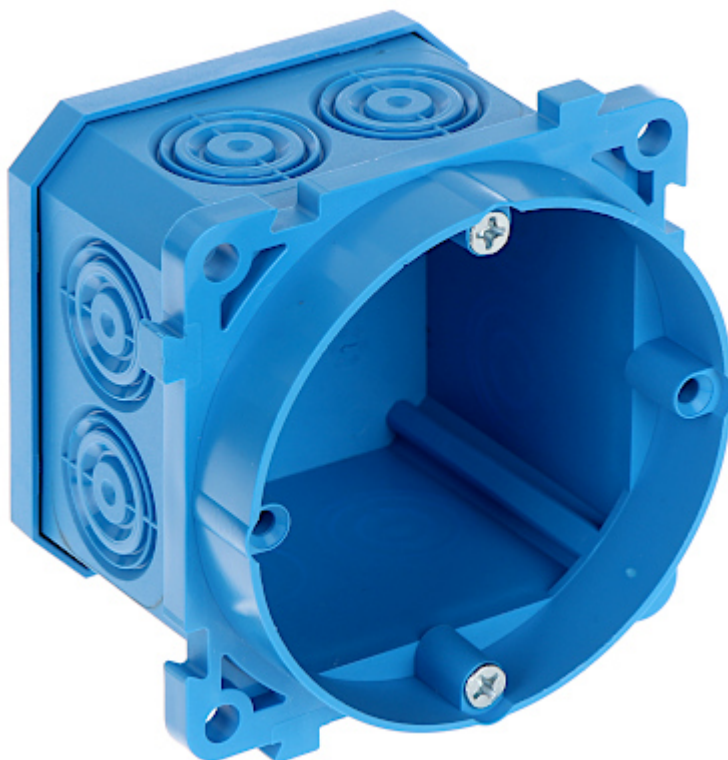


Code: P-DD60

CAVITY WALL BOX FOR WOODEN HOUSES **P-DD60** SIMET

A specialist box for cavity walls. A special feature of the box is the installation in a cavity wall, with its embedding from the inside. After drilling the Ø 68mm mounting hole, the box can be fixed in a wood panelled wall, using four screws. The extended box flange enters the hole to a depth of 12 mm. The box can be deepened using the PD60x30 segment extension ring or attach the accessories with 25mm or 40mm extended screws. Openable box bottom allows to efficiently make cable entries.

The box is made from non-halogen, self-extinguishing plastic. The box has a serial construction that gives the possibility of combining into multiple blocks of boxes.



Number of sections:	1
"Index of Protection":	IP30
Main features:	<ul style="list-style-type: none"> • Flush-mounted, serial, for hollow walls, for wooden houses • Class V0 • flammability index : 960 °C • 4 fixing points • 2 Mounting screws - included • Screwed cover with screws • Body screwed from the back of the wall with screws
Material:	halogen free and inflammable
Color:	Blue
Weight:	0.042 kg
Mounting holes distance:	60 mm
Dimensions:	73 x 73 x 59 mm
Manufacturer / Brand:	SIMET
Guarantee:	2 years