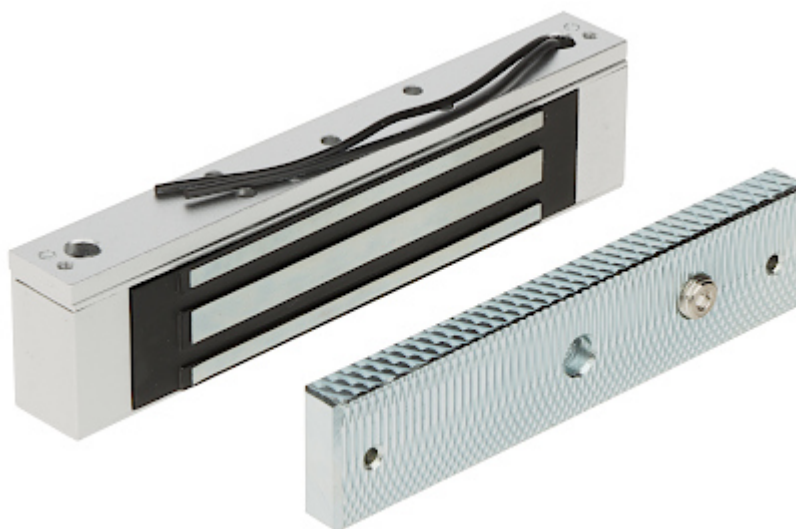


Code: ZE-180-2

## ELECTROMAGNETIC LOCK **ZE-180-2**

Electromagnetic lock, surface, single. With a simple design and modern manufacturing technology, is a reliable device to lock doors and gates. Force an entry closed by lock requires the use of force of > 180 kg. It operates reversibly - it is open when power is off. The lock is composed of two elements: electromagnet (usually mounted in the frame) and lock plate (usually mounted in the door). Error free operation of the lock is a result of lack the mechanical elements, which after some time become damaged. Device is designed for indoor use only.



Load capacity:	180 kg
Rated voltage:	12 V DC
Current consumption:	500 mA
Weight:	0.88 kg (total)
Dimensions:	<ul style="list-style-type: none"> <li>• 169 x 39 x 23 mm (electromagnetic lock)</li> <li>• 140 x 32 x 11.5 mm (metal plate)</li> </ul>
Guarantee:	2 years