

## Warning!

Please read the user manual included in this work as it contains important information related with safety of installation and use of the device.

Only persons who read the user manual may use the device.

The user manual must be kept because it may be required in the future. The device is to be used exclusively for purposes specified in this user manual.

The device must be unpacked prior to starting-up. After removing the packaging make sure the device is in working order. If the product has defects, it should not be used until it is repaired.

The product is intended for use at home and commercial use and may not be used for other than intended use.

The manufacturer is not liable for damages resulting from not adhering to the rules contained in the user manual, therefore, we recommend to follow the aforementioned safety rules for operation and maintenance of the device. In this way you will ensure yourself safety and avoid causing damage to the device.

The manufacturer and the supplier are not liable for losses or damages arising out of the product, including financial or intangible losses, loss of profits, income, data, pleasure from use of the product or other products related with it - indirect, incidental or consequential loss or damage. The above provisions apply whether the loss or damage concerns:

1. Deterioration of quality or the lack of operation of the products or products related with it due to damage as well as the lack of access to the product when it is undergoing repair, which results in stoppage the loss of user's time or a break in business activity;
2. Improper results of operation of the product or products related with it;
3. It applies to losses and damages according to any legal category, including negligence and other losses, termination of a contract, expressed or implied guarantee and strict liability (even if the manufacturer or the supplier was notified about the possibility of occurrence of such damages).

### Safety measures:

Particular attention at designing was directed to quality standards of the device where ensuring safety of operation is the most important factor.

The device must be secured against contact with caustic, staining and viscous fluids.

The device was designed in such a way that it restarts operation when power supply is restored after a break.

**Attention! We recommend using protections to further protect the device from possible overvoltages in installations. Surge protectors are effective protection against accidental pass to the device voltages higher than the rated. Damages caused by pass the voltages higher than specified in manual, are not under warranty.**

Turn off the device before transporting it.

Prior to connecting the device to a power source check whether the supplied voltage is consistent with rated voltage specified in the user manual.

### Proper product disposal:

A marking of a crossed out waste bin indicates that the product may not be disposed together with other household waste in the entire EU. To avoid possible damage to the natural environment of health due to uncontrolled waste disposal, therefore, it should be handed over for recycling, propagating in this way sustainable use of natural resources.

To return a worn-out product, use a collection and disposal system of this type of equipment or contact a seller from whom it was purchased. He will then be recycled in an environmentally-friendly way.

Tribrid DVR working in three standards: HD-CVI, IP and analog.

The HD-CVI interface allows to transmission of analog, composite video signal via coaxial cable. Via single coaxial cable can be transmitted three signals: video, audio and control. It enables the transmission of HD resolution images for even 500 m distance with keeping the low costs of the installation. During transmission there are no delays and is maintained the original, high quality image.





# User Manual

Code: DHI-HCVR5416L-V2  
HD-CVI, PAL, TCP/IP DVR **DHI-HCVR5416L-V2** 16 CHANNELS +eSATA DAHUA

Standard:	HD-CVI, PAL, TCP/IP
Maximal total frame rate:	HD-CVI, IP, PAL : 240 fps @ 1920 x 1080 400 fps @ 1280 x 720 400 fps @ 960 x 576
Recording speed adjustment:	HD-CVI, PAL, IP : 1 ... 15 fps @ 1920 x 1080 1 ... 25 fps @ 1280 x 720 1 ... 25 fps @ 960 x 576
Supported resolutions:	<ul style="list-style-type: none"><li>• 16 x HD-CVI @ 1080p / Composite Video (CVBS) @ 960H</li><li>• 2 x IP @ 720p / 1080p</li></ul>
Operation modes:	<ul style="list-style-type: none"><li>• 16 x HD-CVI / PAL</li><li>• 15 x HD-CVI / PAL + 1 x IP 720p / 1080p</li><li>• 14 x HD-CVI / PAL + 2 x IP 720p / 1080p</li><li>• 2 x IP 720p / 1080p</li></ul>
Video inputs:	16 pcs BNC - HD-CVI / PAL
Video outputs:	1 pcs HDMI 1 pcs VGA 1 pcs BNC
Audio inputs:	<ul style="list-style-type: none"><li>• 4 pcs BNC</li><li>• 1 pcs BNC - Microphone</li></ul>
Audio outputs:	<ul style="list-style-type: none"><li>• 1 pcs BNC</li><li>• 1 pcs BNC - Microphone</li></ul>
Image compression method:	H.264
Number of compression levels:	5
Image records resolutions:	1920 x 1080 1280 x 720 960 x 576 704 x 576 352 x 288 176 x 144
Recording modes:	Manual, Sensor, Motion detection, Schedule
Supported hard drives:	4 x 6 TB SATA + 1 x 6 TB eSATA
External storage devices backup:	Save single frames and whole records from DVR drive to the USB drive
Searching and playback the records:	Records searching: by time + timeline with record type. Playback: forward, fast, slow, step Advanced searching (to the one second accuracy)
Network functions:	Network Client Software and IE browser: live view, playback and backup of the records, partial configuration of the recorder parameters
Network protocols:	HTTP, TCP/IP, IPv4/IPv6, UPNP, RTSP, UDP, SMTP, NTP, DHCP, DNS, IP Filter, PPPOE, DDNS, FTP
Bitrate:	max. 160 Mbps (total)
Mobile phones support:	Port no.: 37777 or access by a cloud (P2P) <ul style="list-style-type: none"><li>• Android: Free application <a href="#">DMSS</a></li><li>• iOS (iPhone): Free application <a href="#">DMSS</a></li></ul> There are also paid versions of mobile applications: gDMSS Plus, iDMSS Plus, wDMSS plus

Alarm inputs / outputs:	16 / 6
PTZ control:	RS-485 PELCO-D/P
Motion Detection:	Split the screen into zones 22 x 18 motion zones Very good sensitivity after motion detection records detected channels only
Mouse support:	✓
IR remote controller in the set:	✓
Power supply:	230 V AC
Weight:	4.79 kg
Dimensions:	440 x 423 x 68 mm
Supported languages:	English, Polish
Country of origin:	China
Manufacturer / Brand:	DAHUA
Guarantee:	<b>3 years</b>

Front view:



Rear view:

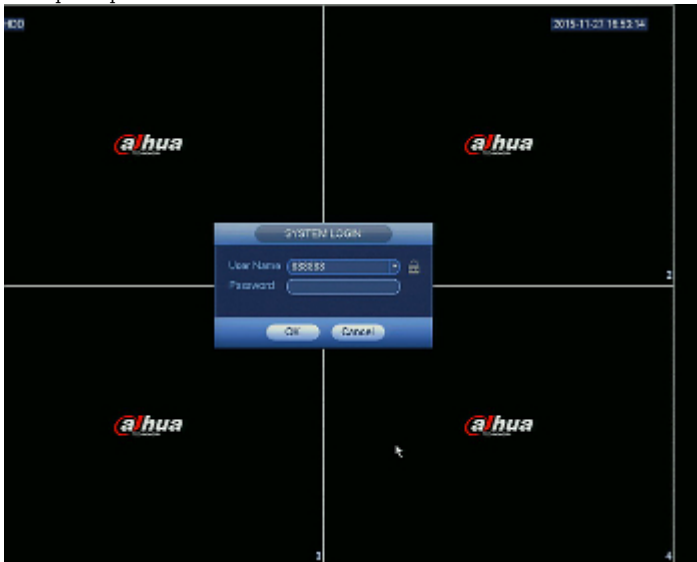


In the kit:





Example captures of device interface:





## PACKAGE

Dimensions (L x W x H): 0x0x0 mm	Gross Weight: 0 kg
----------------------------------	--------------------