

Warning!

Please read the user manual included in this work as it contains important information related with safety of installation and use of the device.

Only persons who read the user manual may use the device.

The user manual must be kept because it may be required in the future. The device is to be used exclusively for purposes specified in this user manual.

The device must be unpacked prior to starting-up. After removing the packaging make sure the device is in working order. If the product has defects, it should not be used until it is repaired.

The product is intended for use at home and commercial use and may not be used for other than intended use.

The manufacturer is not liable for damages resulting from not adhering to the rules contained in the user manual, therefore, we recommend to follow the aforementioned safety rules for operation and maintenance of the device. In this way you will ensure yourself safety and avoid causing damage to the device.

The manufacturer and the supplier are not liable for losses or damages arising out of the product, including financial or intangible losses, loss of profits, income, data, pleasure from use of the product or other products related with it - indirect, incidental or consequential loss or damage. The above provisions apply whether the loss or damage concerns:

1. Deterioration of quality or the lack of operation of the products or products related with it due to damage as well as the lack of access to the product when it is undergoing repair, which results in stoppage the loss of user's time or a break in business activity;
2. Improper results of operation of the product or products related with it;
3. It applies to losses and damages according to any legal category, including negligence and other losses, termination of a contract, expressed or implied guarantee and strict liability (even if the manufacturer or the supplier was notified about the possibility of occurrence of such damages).

Safety measures:

Particular attention at designing was directed to quality standards of the device where ensuring safety of operation is the most important factor.

The device must be secured against contact with caustic, staining and viscous fluids.

The device was designed in such a way that it restarts operation when power supply is restored after a break.

Attention! We recommend using protections to further protect the device from possible overvoltages in installations. Surge protectors are effective protection against accidental pass to the device voltages higher than the rated. Damages caused by pass the voltages higher than specified in manual, are not under warranty.

Turn off the device before transporting it.

Prior to connecting the device to a power source check whether the supplied voltage is consistent with rated voltage specified in the user manual.

Proper product disposal:

A marking of a crossed out waste bin indicates that the product may not be disposed together with other household waste in the entire EU. To avoid possible damage to the natural environment of health due to uncontrolled waste disposal, therefore, it should be handed over for recycling, propagating in this way sustainable use of natural resources.

To return a worn-out product, use a collection and disposal system of this type of equipment or contact a seller from whom it was purchased. He will then be recycled in an environmentally-friendly way.

IP camera with efficient H.264 image compression algorithm for clear and smooth video streaming at maximal resolution of 720p. Very easy operation by Internet Explorer browser allows the users to convenient and remote support, and also remote management of the camera. Included camera software enables management and integrated monitoring of many network cameras. Its using allows to create large surveillance system.

ICR - The movable IR filter allows to perfect colors reproduction in daylight and wide gray-scale with high sharpness of the image at night mode. Camera bracket allows to adjust the camera to any direction, and power cables are hidden inside the bracket.





User Manual

Code: GEMINI-61BB-13W
IP CAMERA **GEMINI-61BB-13W** - 720p 3.6 mm

Standard:	TCP/IP
Sensor:	1/3 " Sony EXMOR CMOS
Digital Image Processor:	Hisilicon 3518A
Matrix size:	1.3 Mpx
Resolution:	1280x720 - 720p 960x544
Lens:	3.6 mm
View angle:	78 °
S/N ratio:	50 dB
IR illuminator power adjustment:	Automatic
Range of IR illumination:	15 m
Image compression method:	<ul style="list-style-type: none">• H.264• MJPEG
Alarm inputs / outputs:	—
Bitrate:	16 ... 8000 kbps
Main stream frame rate:	max. 25 fps - 720p
Network interface:	10/100 Base-T (RJ-45)
Network protocols:	TCP/IP, UDP, HTTP, DHCP, RTP/RTSP, DNS, DDNS, NTP, PPPoE, UPnP, ONVIF
Audio:	—
WEB Server:	Built-in
Max. number of on-line users:	10
ONVIF:	2.0
RS-485 interface:	—
Mobile phones support:	Iphone and Android applications - mobile port 5053
Default admin user / password:	admin / (null)
Default IP address:	192.168.1.188
Web browser access ports:	80, 554, 1935 - Firmware V1.0, V1.1 80, 5050, 5051, 5052 - Firmware V4.0 - V4.3
PC client access ports:	5050, 5051, 5052
Mobile client access ports:	5053
Port ONVIF:	80 - Firmware V1.0, V1.1 8000 - Firmware V4.0 - V4.3
RTSP URL:	rtsp://ip_address:554/ch01.264 - Main stream rtsp://ip_address:554/ch01_sub.264 - Sub stream



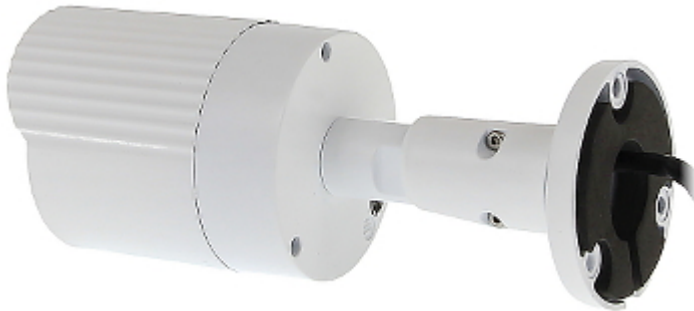
DELTA-OPTI Monika Matysiak; <https://www.delta.poznan.pl>
POL; 60-713 Poznań; Graniczna 10
e-mail: delta-opti@delta.poznan.pl; tel: +(48) 61 864 69 60

Main features:	<ul style="list-style-type: none"> • ICR - Movable InfraRed filter • Possibility to change the resolution, quality and bit rate • Motion Detection • Privacy zones • Configurable: brightness, contrast, saturation • Sharpness - sharper image outlines • Mirror - Mirror image • Day/night mode
Power supply:	12 V DC / 350 mA
Housing:	Metal
Color:	White
"Index of Protection":	IP66
Operation temp:	-10 °C ... 55 °C
Weight:	0.39 kg
Dimensions:	Ø 65 x 168 mm
Supported languages:	English, Polish
Manufacturer / Brand:	GEMINI
Guarantee:	2 years

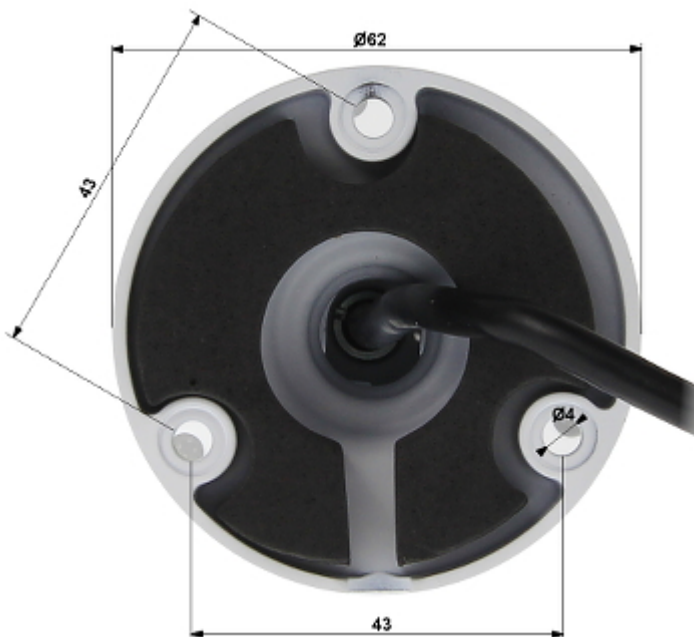
Front view:



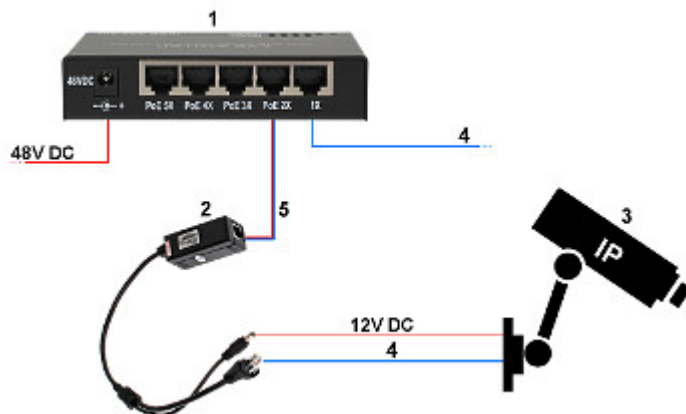
Side view:



Bracket dimensions:



See how you can power the camera in PoE standard:



1. SWITCH PoE
 2. POE-802.3AF/C
 3. IP Camera
 4. Ethernet
 5. Ethernet + PoE
- In the kit:



PACKAGE

Dimensions (L x W x H): 0x0x0 mm	Gross Weight: 0 kg
----------------------------------	--------------------

