



# User Manual

Code: APTI-AI60FRTD

ACCESS CONTROLLER WITH TEMPERATURE MEASUREMENT **APTI-AI60FRTD** 4.5 mm - 1080p

## Warning!

Please read the user manual included in this work as it contains important information related with safety of installation and use of the device.

Only persons who read the user manual may use the device.

The user manual must be kept because it may be required in the future. The device is to be used exclusively for purposes specified in this user manual.

The device must be unpacked prior to starting-up. After removing the packaging make sure the device is in working order.

If the product has defects, it should not be used until it is repaired.

The product is intended for use at home and commercial use and may not be used for other than intended use.

The manufacturer is not liable for damages resulting from not adhering to the rules contained in the user manual, therefore, we recommend to follow the aforementioned safety rules for operation and maintenance of the device. In this way you will ensure yourself safety and avoid causing damage to the device.

The manufacturer and the supplier are not liable for losses or damages arising out of the product, including financial or intangible losses, loss of profits, income, data, pleasure from use of the product or other products related with it - indirect, incidental or consequential loss or damage. The above provisions apply whether the loss or damage concerns:

1. Deterioration of quality or the lack of operation of the products or products related with it due to damage as well as the lack of access to the product when it is undergoing repair, which results in stoppage the loss of user's time or a break in business activity;
2. Improper results of operation of the product or products related with it;
3. It applies to losses and damages according to any legal category, including negligence and other losses, termination of a contract, expressed or implied guarantee and strict liability (even if the manufacturer or the supplier was notified about the possibility of occurrence of such damages).

### Safety measures:

Particular attention at designing was directed to quality standards of the device where ensuring safety of operation is the most important factor.

The device must be secured against contact with caustic, staining and viscous fluids.

The device was designed in such a way that it restarts operation when power supply is restored after a break.

**Attention! We recommend using protections to further protect the device from possible overvoltages in installations. Surge protectors are effective protection against accidental pass to the device voltages higher than the rated. Damages caused by pass the voltages higher than specified in manual, are not under warranty.**

Turn off the device before transporting it.

Prior to connecting the device to a power source check whether the supplied voltage is consistent with rated voltage specified in the user manual.

### Proper product disposal:

A marking of a crossed out waste bin indicates that the product may not be disposed together with other household waste in the entire EU. To avoid possible damage to the natural environment of health due to uncontrolled waste disposal, therefore, it should be handed over for recycling, propagating in this way sustainable use of natural resources.

To return a worn-out product, use a collection and disposal system of this type of equipment or contact a seller from whom it was purchased. He will then be recycled in an environmentally-friendly way.



Access controller based on face recognition with non-contact body (wrist) temperature measurement.

A solution dedicated to temperature measurement. The sensor placed on the side is able to detect an increased temperature of the object. It can be used for preliminary temperature control in places such as customs, airports, schools and hospitals. Face recognition with extended functionality allows you to determine whether the observed person has a protective mask and in the absence of a mask perform the appropriate action, e.g. trigger a voice message reminding to cover the face.

**Attention!** The face recognition feature requires that photos for the database be taken in homogeneous lighting, and the size of a single photo must not exceed 2 MB. In addition, the photo should be cropped in such a way that the image contains the entire face, while the face should occupy as much of the surface of the image as possible. When using the face recognition function for people in protective masks, the optimal working conditions of the device are ensured by positioning it so that the lens is at the height of the face and is directed towards it.

Sensor:	1/2.8 " SONY Starvis™ Back-illuminated CMOS
Matrix size:	2.1 Mpx
Scanning system:	Progressive
Lens:	4.5 mm
View angle:	68 °
Optical zoom:	—
Resolution:	1920 x 1080 - 1080p

#### Auxiliary camera:

Sensor:	1/5 " GC2145
Matrix size:	2 Mpx
Pixel pitch:	1.75 µm
Lens:	2.4 mm
View angle:	70 °
Resolution:	800 x 600 - 0.48 Mpx

#### General information:

Standard:	TCP/IP
-----------	--------



# User Manual

Code: APTI-AI60FRTD

ACCESS CONTROLLER WITH TEMPERATURE MEASUREMENT **APTI-AI60FRTD** 4.5 mm - 1080p

Range of IR illumination:	5 m
White light LED illuminator range:	5 m
Temperature measurement:	✓
Temperature measurement range:	35 °C ... 42 °C
Accuracy of temperature measurement:	± 0.3 °C
Face recognition distance:	0.5 m ... 2.3 m (max 30 000 faces in the database)
Temperature measurement distance:	1 cm ... 3 cm
Internal memory:	Support storage of 25 000 records
Video output:	—
RS-485 interface:	✓
Wiegand interface:	✓
Memory card slot:	—
Alarm inputs / outputs:	0 / 1 - Relay outputs
Audio:	Speaker built-in
Network interface:	10/100 Base-T (RJ-45)
Network protocols:	IPv4, HTTP, HTTPS, TCP/IP
WEB Server:	Built-in
Max. number of on-line users:	20
ONVIF:	—
Default IP address:	DHCP / 192.168.1.88
Default admin user / password:	admin / 12345
Web browser access ports:	7080
PC client access ports:	7080
Main features:	<ul style="list-style-type: none"><li>• Built-in LCD display showing the image from the video camera and the result of temperature measurement - 1024 x 600 px</li><li>• Wiegand 26</li><li>• Day/Night mode (color/b&amp;w/auto)</li><li>• RESET button</li><li>• Relay output operating modes: access control or notification of an exception</li></ul>
Power supply:	12 V DC
Power consumption:	≤ 12 W
Housing:	Compact - Metal
Color:	Silver
"Index of Protection":	IP66
Operation temp:	15 °C ... 25 °C - temperature measurement only in closed rooms (stabilized temperature)
Weight:	1.02 kg

Dimensions:	305 x 112 x 59 mm
Montage hole diameter:	33 mm
Length of the cable:	64 cm
Supported languages:	Polish, English, French, Spanish, Russian, Turkish, Italian
Manufacturer / Brand:	APTI
Guarantee:	<b>3 years</b>

Front view:



Side view:



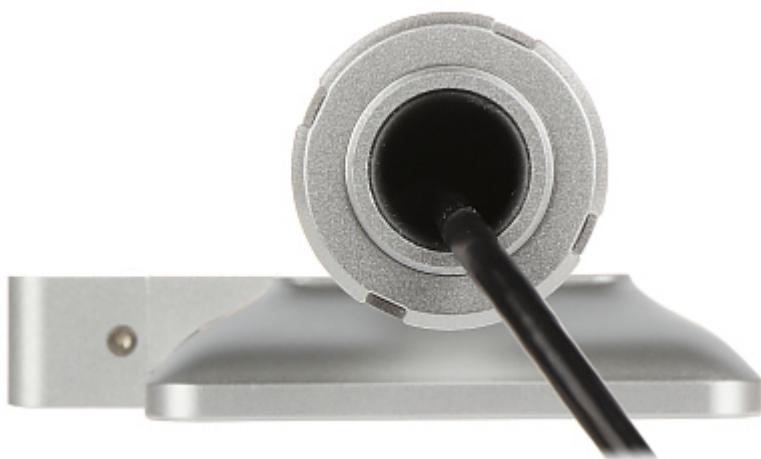
Temperature Sensor:



Rear view:



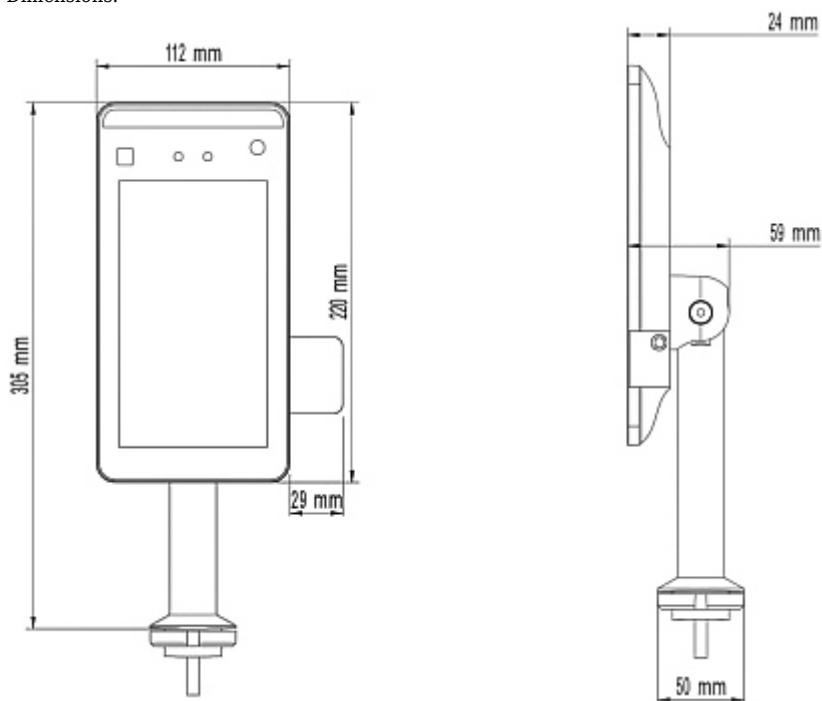
Mounting side view:



Connectors:



Dimensions:



Configuration and operation of the controller:

:

Controller with the BD-A003 bracket, available separately:



In the kit:



## PACKAGE

Dimensions (L x W x H): 0x0x0 mm	Gross Weight: 0 kg
----------------------------------	--------------------