



User Manual

Code: GSM-X-LTE
GSM COMMUNICATION MODULE **GSM-X-LTE** SATEL

Warning!

Please read the user manual included in this work as it contains important information related with safety of installation and use of the device.

Only persons who read the user manual may use the device.

The user manual must be kept because it may be required in the future. The device is to be used exclusively for purposes specified in this user manual.

The device must be unpacked prior to starting-up. After removing the packaging make sure the device is in working order.

If the product has defects, it should not be used until it is repaired.

The product is intended for use at home and commercial use and may not be used for other than intended use.

The manufacturer is not liable for damages resulting from not adhering to the rules contained in the user manual, therefore, we recommend to follow the aforementioned safety rules for operation and maintenance of the device. In this way you will ensure yourself safety and avoid causing damage to the device.

The manufacturer and the supplier are not liable for losses or damages arising out of the product, including financial or intangible losses, loss of profits, income, data, pleasure from use of the product or other products related with it - indirect, incidental or consequential loss or damage. The above provisions apply whether the loss or damage concerns:

1. Deterioration of quality or the lack of operation of the products or products related with it due to damage as well as the lack of access to the product when it is undergoing repair, which results in stoppage the loss of user's time or a break in business activity;
2. Improper results of operation of the product or products related with it;
3. It applies to losses and damages according to any legal category, including negligence and other losses, termination of a contract, expressed or implied guarantee and strict liability (even if the manufacturer or the supplier was notified about the possibility of occurrence of such damages).

Safety measures:

Particular attention at designing was directed to quality standards of the device where ensuring safety of operation is the most important factor.

The device must be secured against contact with caustic, staining and viscous fluids.

The device was designed in such a way that it restarts operation when power supply is restored after a break.

Attention! We recommend using protections to further protect the device from possible overvoltages in installations. Surge protectors are effective protection against accidental pass to the device voltages higher than the rated. Damages caused by pass the voltages higher than specified in manual, are not under warranty.

Turn off the device before transporting it.

Prior to connecting the device to a power source check whether the supplied voltage is consistent with rated voltage specified in the user manual.

Proper product disposal:

A marking of a crossed out waste bin indicates that the product may not be disposed together with other household waste in the entire EU. To avoid possible damage to the natural environment of health due to uncontrolled waste disposal, therefore, it should be handed over for recycling, propagating in this way sustainable use of natural resources.

To return a worn-out product, use a collection and disposal system of this type of equipment or contact a seller from whom it was purchased. He will then be recycled in an environmentally-friendly way.

The GSM-X-LTE communication module enables using the 4G GSM network as a main or backup communication channel for the alarm control panel. The device is seen by the alarm control panel as an analog telephone line. The module independently monitors the status of both the telephone network and the GSM connection via both SIM cards, allowing the selection of the optimal transmission channel. The device's compatibility with LTE mobile networks ensures the highest quality and reliability of data transmission.

Device makes possible to supervise operation of various devices, including alarm control panels without telephone communicator. Owing to its analog inputs, the GSM-X-LTE can execute functions which are used in automation systems. The product also allows to control the state of outputs using the SMS messages.

The device's capabilities can be extended with an Ethernet network connection using a dedicated GSM-X-ETH module (available separately).

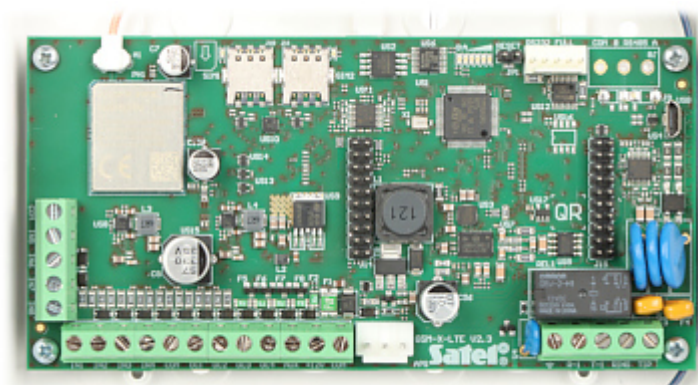
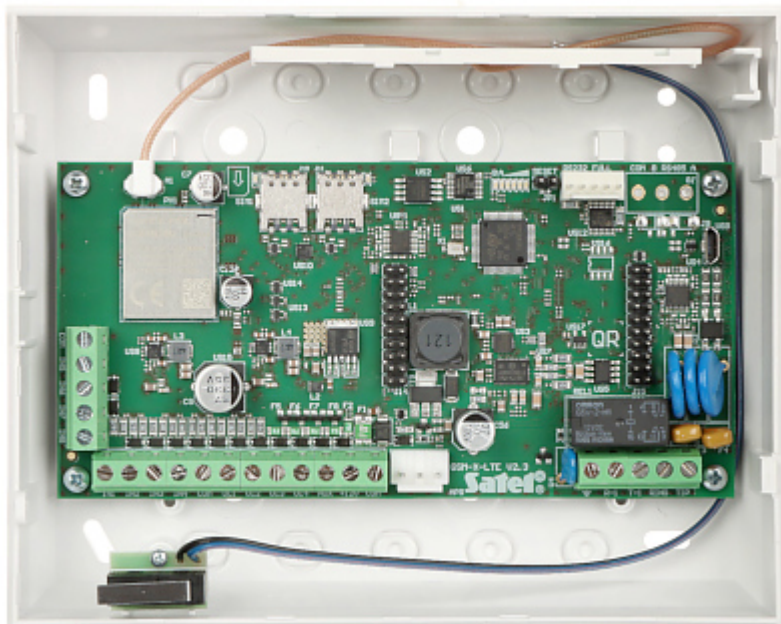


Alarm inputs:	8 pcs
Alarm outputs:	4 pcs
Telephone numbers to reporting events:	max. 8
Event codes sending messages type:	CLIP, PUSH, SMS, GPRS, LTE
Main features:	<ul style="list-style-type: none"> • Two SIM cards support • Simulation of analog telephone line over GSM network • Conversion of PAGER messages to SMS • Remote configuration of module via GPRS • Remote programming of alarm control panels via GPRS - "remote RS-232 port" function • Remote update of module software • TAMPER switch indicating open the cover • 4G/3G/2G GSM network operation
Power supply:	12 V DC / 520 mA
Operation temp:	-10 ... 55 °C
Weight:	0.27 kg
Dimensions:	158 x 126 x 46
Manufacturer / Brand:	SATEL
Guarantee:	2 years

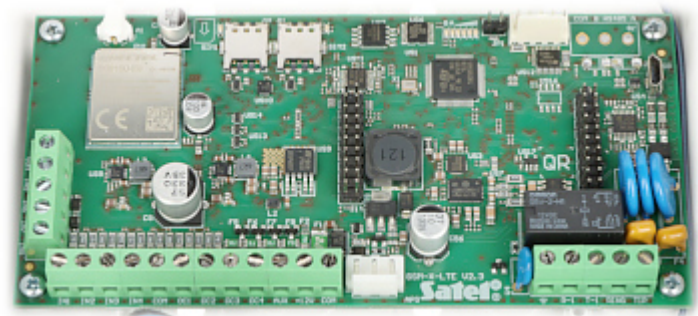
Rear view:



Internal view of the housing:



Connectors:



PACKAGE



User Manual

Code: GSM-X-LTE
GSM COMMUNICATION MODULE **GSM-X-LTE** SATEL

Dimensions (L x W x H): 0x0x0 mm	Gross Weight: 0 kg
----------------------------------	--------------------