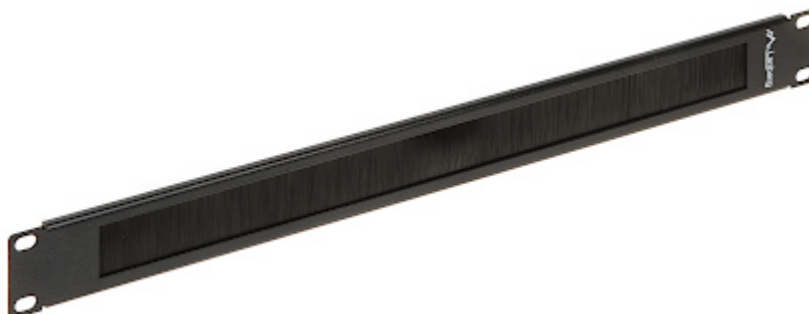


Code: A19-PK

PANEL WITH CABLE ENTRY **A19-PK**

The panel allows to enter the cables to the devices installed inside RACK cabinet, ensuring protection of the free sockets against dust.



Width:	19 "
Height:	1 U
Material:	Steel - powder painted
Color:	Black (RAL 9005)
Application:	RACK 19"
Main features:	<ul style="list-style-type: none"> • 389 x 30 mm (opening for cables entry) • Cable entry with brushes ensuring protection against dust • 4-point fixing to the front RACK rails • 4 pcs. of M6 screws with cage nuts included • Corrosion resistance
Weight:	0.225 kg
Dimensions:	483 x 44 x 15 mm
Guarantee:	2 years