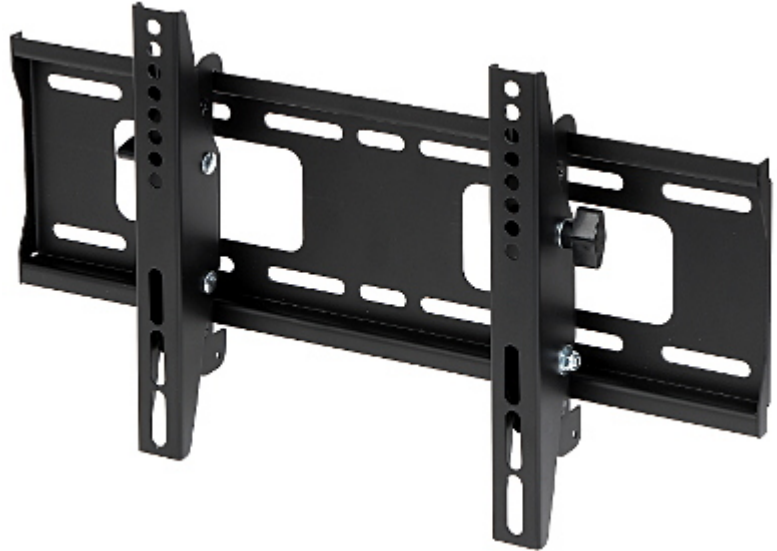


Code: BS-101S

MONITOR MOUNT **BS-101S**

The BS-101S mount is intended for hanging a TV or LCD / OLED monitor on the wall. The wall mount allows to easy (without any tools) adjustment of panel tilt angle. Maximal load capacity is 75 kg.



Mounting standard:	VESA : 75, 100, 100 x 200, 200, 200 x 300, 200 x 400
Screen size range:	32 " ... 55 "
Bearing capacity:	50 kg
Distance from mounting surface:	56 mm from wall
Color:	Black
Tilt adjustment:	-10 ° ... 5 °
Horizontal rotation:	—
Rotation in the plane of the screen:	—
Dimensions:	448 x 260 x 56 mm
Weight:	1.95 kg
Guarantee:	2 years