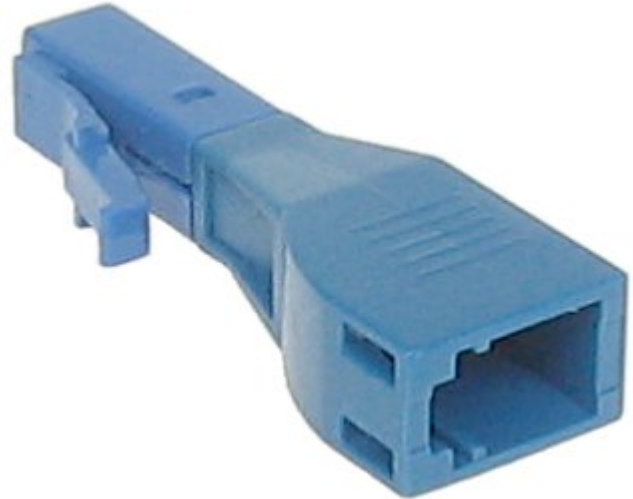


Code: TO-LC/10DB

ATTENUATOR **TO-LC/10DB**

Optical attenuator with attenuation of 10dB, LC socket to LC plug (female-to-male).
Attenuator can be used in front of a receiver to diminish optical power, so that it is within receiver's dynamic range.



Connector type:	LC Plug / Socket
Attenuation:	10 dB
Main features:	can work with both single-mode and multi-mode networks, in every transmission window (850nm, 1310nm, 1550nm)
Housing:	Plastic
Guarantee:	2 years