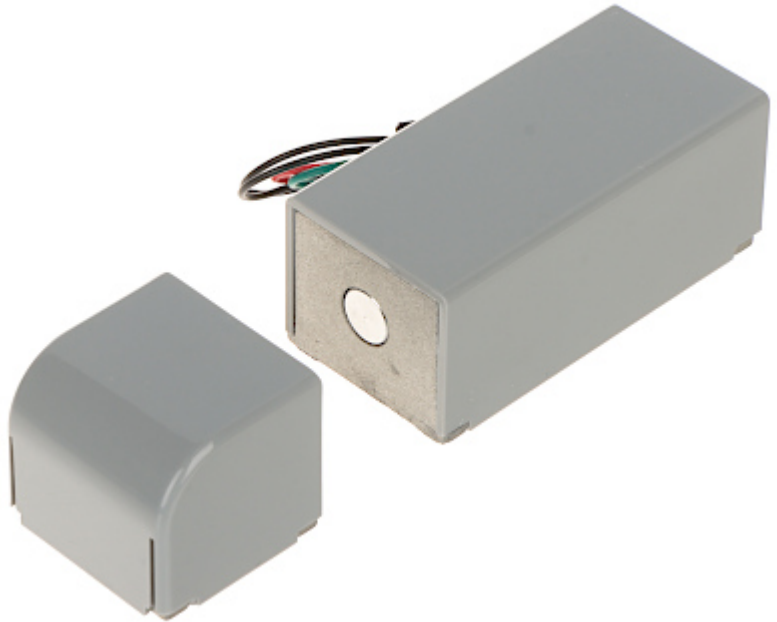


Code: DT-3033

## ELECTROMAGNETIC CABINET BOLT **DT-3033** REVERSIBLE DANTOM

Reversible electromagnetic bolt designed for installation in cabinets and lockers in places such as: changing rooms, swimming pools, airports, shopping centers, luggage storage rooms, etc.



Rated voltage:	12 V DC
Current consumption:	300 mA
Application:	right-side door / left-side door
Ratched lock:	—
Memory function:	—
Reverse action:	After a power outage the door will be unlocked
Clearance adjustment:	—
Allowable uninterrupted operation time:	unlimited
Main features:	<ul style="list-style-type: none"> <li>• Lock state check - NO contact</li> <li>• Bolt slide out distance : 9 mm</li> <li>• Surface mounting (can be used on narrow door frames)</li> </ul>
Weight:	0.27 kg (total)
Dimensions:	74 x 36 x 31 mm - Electromagnetic lock 33 x 36 x 30 mm - Clamp
Manufacturer / Brand:	DANTOM
Guarantee:	2 years

