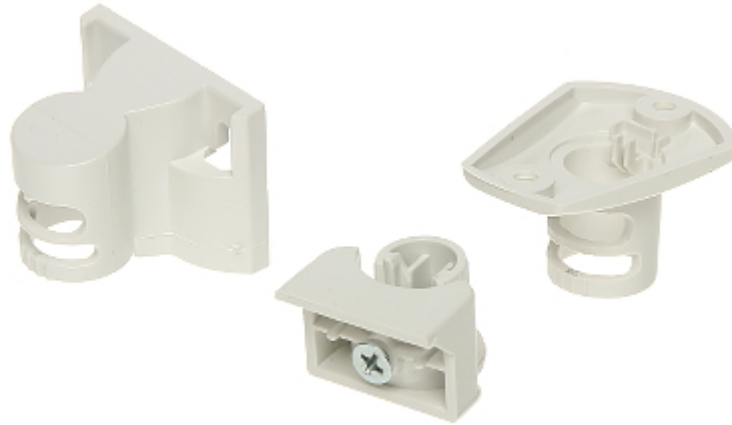


Code: DSC-LC-L1ST

BRACKET FOR MOTION DETECTORS **DSC-LC-L1ST**



Application:	Detectors from DSC LC series
Tilt angle adjustment:	0 °
Swivel angle adjustment:	± 45 °
Housing:	Plastic
Assembly:	Universal bracket, which allows to easy wall or ceiling mounting
Weight:	0.015 kg (wall-mounted) 0.011 kg (ceiling-mounted)
Dimensions:	42 x 45 x 34 mm (wall-mounted) 36 x 47 x 31 mm (ceiling-mounted)
Guarantee:	2 years