

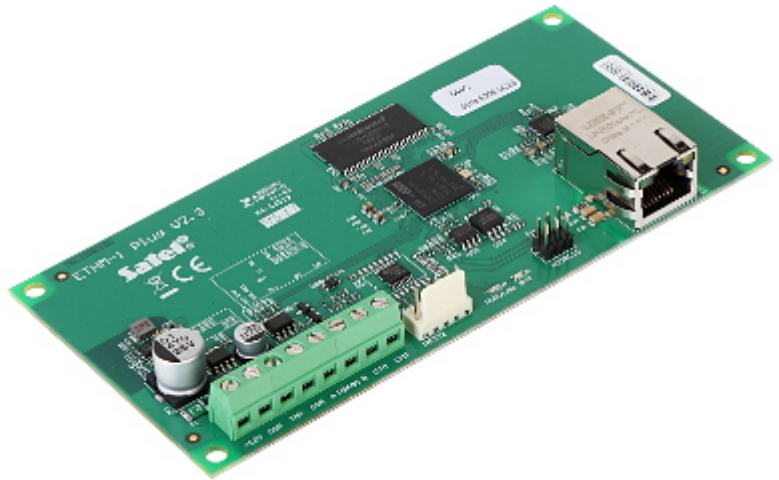
Code: ETHM-1-PLUS

ETHERNET COMMUNICATION MODULE **ETHM-1-PLUS** SATEL

Net: **123.59 USD** Gross: **152.02 USD**

The ETHM-1-PLUS communication module offers the possibility of utilizing ETHERNET communication in INTEGRA, INTEGRA PLUS and VERSA control panels.

It facilitates TCP/IP, UDP monitoring and remote programming of control panels via the Internet. In combination with INTEGRA control panels, offers the functionality of remote system control via the Internet by means of a computer, tablet or smartphone.

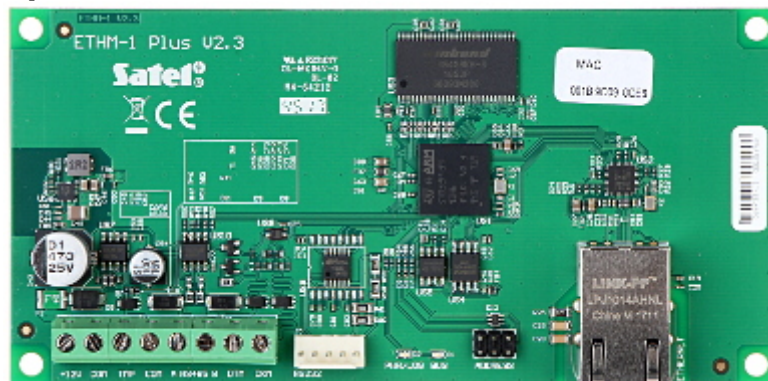


SPECIFICATION

Main features:	<ul style="list-style-type: none">• INTEGRA / INTEGRA PLUS / VERSA control panels support• Monitoring TCP/IP, UDP• INTEGRA system supervision with GUARDX• INTEGRA system operation via web browser and mobile phone with MobileKPD-2, MobileKPD-2 Pro application• Possibility of event notification using e-mail messages (only INTEGRA Plus - Firmware v1.13)• Transmission encoding• Support for DHCP automatic address configuration• Open protocol for systems integration via the TCP/IP channel
Power supply:	12 V DC
Current consumption:	max. 80 mA
Operation temp:	-10 °C ... 55 °C
Weight:	0.064 kg
Dimensions:	140 x 68 mm
Manufacturer / Brand:	SATEL
Guarantee:	2 years

PRESENTATION

Top view:



DELTA-OPTI Monika Matysiak; <https://www.delta.poznan.pl>
POL; 60-713 Poznań; Graniczna 10
e-mail: delta-opti@delta.poznan.pl; tel: +(48) 61 864 69 60

In the kit:

