

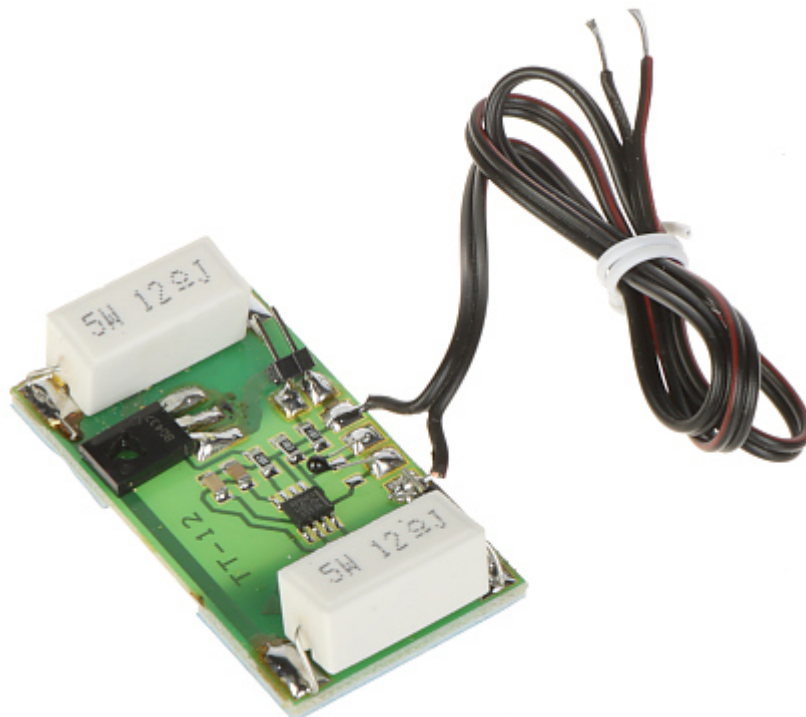
Code: TT-12E

THERMOSTAT TT-12E

Net: 7.61 EUR Gross: 7.61 EUR

Using the heaters with thermostat inside the outdoor housing enables stable and safe camera and lens working conditions, and eliminates the undesirable phenomena such as: sweating, rapid freezing and condensation of water on the glass of the housing at low temperatures. The device turns the heaters on when the temperature inside the housing is below the specified value.

After open the camera housing, you need mount the thermostat on the end of housing's mounting panel and switch the power on DC +12V to the red wire and GND to the black one. The device is extra protected against reverse polarity connection of the power voltage. After mounting it is necessary to test the correct camera work. Please close the jumper on the thermostat board (by a screw driver for example). The heaters will turn on. Then check the correct camera work.

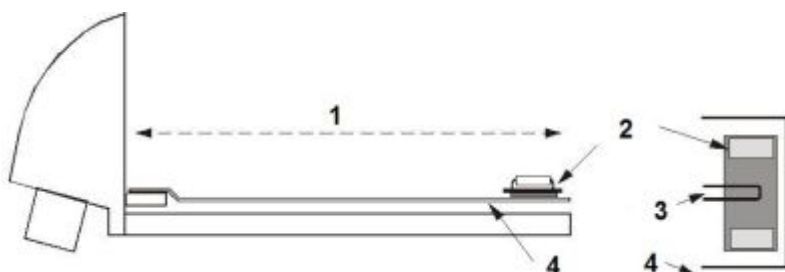
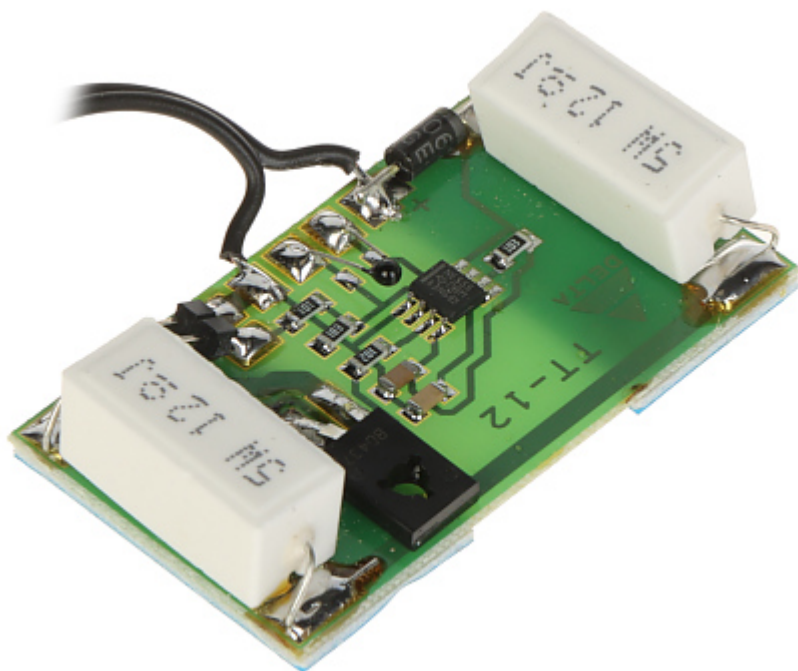


SPECIFICATION

Thermostat switching on temperature:	3 °C
Housing type:	TP-601, TP-606, TP-607, TH-200
Camera power supply adapter:	—
Power supply:	12 V DC
Power / current consumption:	max. 5.5 W / 460 mA
Dimensions:	57 x 32 x 15 mm (heaters board)
Manufacturer / Brand:	DELTA
Guarantee:	3 years

PRESENTATION

DELTA-OPTI Monika Matysiak; <https://www.delta.poznan.pl>
POL; 60-713 Poznań; Graniczna 10
e-mail: delta-opti@delta.poznan.pl; tel: +(48) 61 864 69 60



- 1) Camera mounting place
- 2) Heaters board
- 3) Housing's mounting panel slide
- 4) Housing's mounting panel

PACKAGE

Dimensions (L x W x H): 0x0x0 mm	Gross Weight: 0 kg
----------------------------------	--------------------