

Code: GRAM-BOX

## BALLAST TANK FOR MOUNTING SOLAR PANELS GRAM-BOX

Net: 103.31 EUR Gross: 103.31 EUR

The GRAM-BOX ballast system for mounting solar panels is an innovative solution designed for use on flat surfaces and pitched roofs with a slope of up to 10 degrees. Tanks filled with liquid are much safer and more convenient during installation than standard systems using a metal frame and concrete blocks. The lack of sharp edges significantly reduces the risk of mechanical damage to the roof sheathing, and thanks to the low weight of the tank before filling, its transport to the final installation site is not a problem. After placing the elements in the final place and attaching the panels to them, the tanks should be filled with mains water. In order to increase the stability of the structure, additional stiffening strips can be used, mounted with M8 screws to dedicated inlets located in the front and rear walls of the tank.

The system can also be used in winter, at sub-zero temperatures. In the manufacturing process, the tanks are pre-filled with a suitable amount of non-freezing concentrate. After dilution during refilling with water, the concentration of the agent in the container remains high enough to prevent the water from freezing. The tank is delivered to the user with glycol concentrate and weighs 10 kg, therefore, to determine the recommended weight of 60 kg, add 50 liters of mains water to the tank, which translates to obtaining the recommended weight and concentration of the glycol solution of 10.7%.

In the upper part of the tank, mounting rails with slots for M8 screws are attached. The inclination of the plane determined by the rails to the ground is 21°. Mounting rails are fully compatible with mounting systems suitable for trapezoidal bridges.

**Attention!** The set **does not include** stabilizing strips, screws or rails for mounting solar panels. Appropriate accessories should be selected and purchased separately - according to the dimensions of the mounted panels.



### SPECIFICATION

Material:	Plastic
Tank capacity:	60 l
The inclination of the panel surface relative to the ground:	21 °
Maximum inclination of the mounting surface:	10 °
Main features:	<ul style="list-style-type: none"><li>• Low tank weight before filling</li><li>• No sharp edges that could damage the roof sheathing</li><li>• Very easy and quick assembly</li><li>• Universal rails for mounting solar panels</li><li>• The tank is delivered to the user with glycol concentrate and weighs 10 kg, therefore, to determine the recommended weight of 60 kg, add 50 liters of mains water to the tank, which translates to obtaining the recommended weight and concentration of the glycol solution of 10.7%</li><li>• The tank has a "lip" in the lower part that prevents the panel from sliding off the ballast</li></ul>
Weight:	9.6 kg
Dimensions:	920 x 460 x 380 mm
Guarantee:	2 years

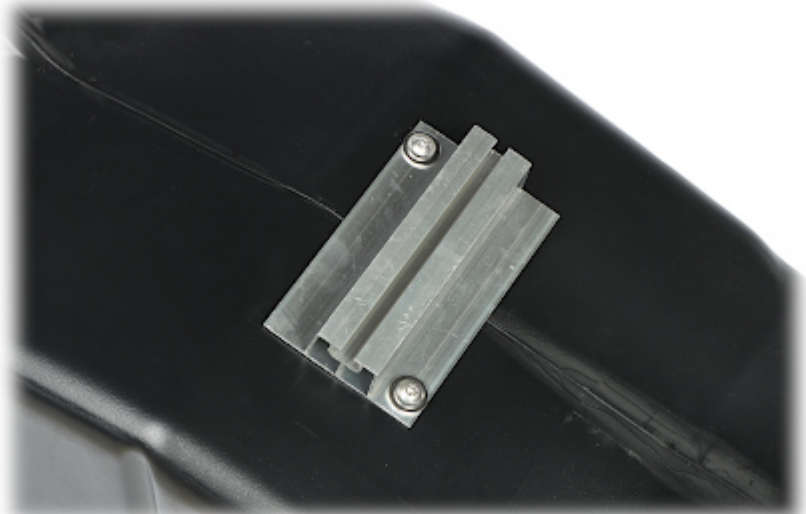
### PRESENTATION

DELTA-OPTI Monika Matysiak; <https://www.delta.poznan.pl>  
POL; 60-713 Poznań; Graniczna 10  
e-mail: [delta-opti@delta.poznan.pl](mailto:delta-opti@delta.poznan.pl); tel: +(48) 61 864 69 60

Inlets with M8 thread - front:



mounting rails:



Rear view:



Inlets with M8 thread - rear:



Water filling hole:



Side view:



Example of application:



## PACKAGE

Dimensions (L x W x H): 0x0x0 mm	Gross Weight: 0 kg
----------------------------------	--------------------



DELTA-OPTI Monika Matysiak; <https://www.delta.poznan.pl>  
POL; 60-713 Poznań; Graniczna 10  
e-mail: [delta-opti@delta.poznan.pl](mailto:delta-opti@delta.poznan.pl); tel: +(48) 61 864 69 60