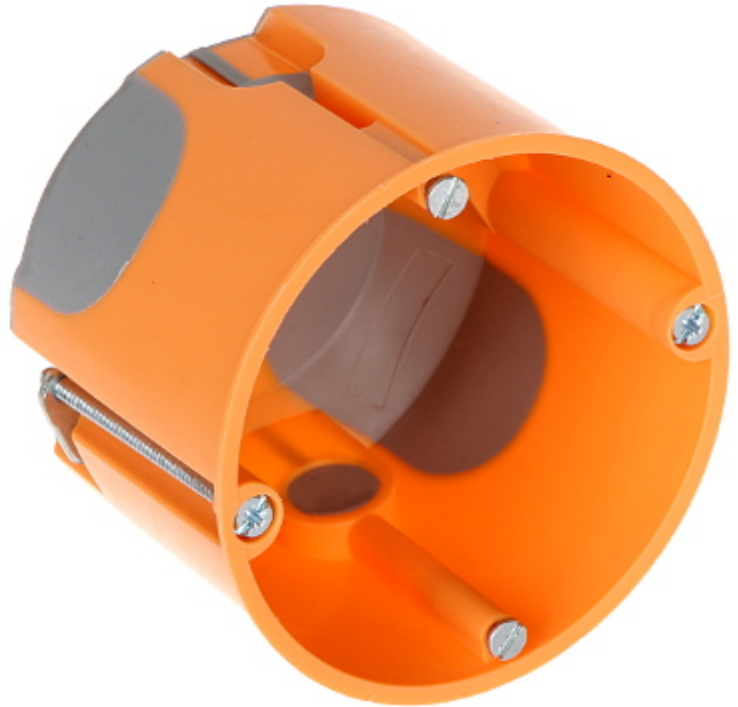


Code: E-3700

FLUSH BOX E-3700 SIMET

Net: 1.94 EUR Gross: 1.94 EUR

Flush electrical installation box, windproof with membranes. The box is intended for installation in hollow walls (plasterboard). Tightness of the box is ensured by flexible membranes.



SPECIFICATION

Number of sections:	1
"Index of Protection":	IP30
Main features:	<ul style="list-style-type: none">• Flush-mounted, deep, for hollow walls, with flexible membranes• flammability index : 850 °C• 2 fixing points• 2 Mounting screws, 2 special screws with holders to fastening to the wall - included
Material:	Non-halogen plastic
Color:	Orange
Weight:	0.026 kg
Mounting holes distance:	60 mm
Dimensions:	Ø 70 x 60 mm
Manufacturer / Brand:	SIMET
Guarantee:	2 years

PRESENTATION

Front view:

DELTA-OPTI Monika Matysiak; <https://www.delta.poznan.pl>
POL; 60-713 Poznań; Graniczna 10
e-mail: delta-opti@delta.poznan.pl; tel: +(48) 61 864 69 60



Rear view:



PACKAGE

Dimensions (L x W x H): 0x0x0 mm	Gross Weight: 0 kg
----------------------------------	--------------------