

Code: RAPID-JOINT-L25-IP68

# STRAIGHT JOINT GELBOX **RAPID-JOINT-L25-IP68** IP68 RayTech

Net: 29.02 EUR Gross: 35.69 EUR

Straight type joint pre-filled with sealing gel. The product meets the IP68 tightness class. The box is perfect to use in areas with high moisture and underground (for example in electrical garden installations).

The gel used to seal is not harmful to humans, environmentally safe, and easily removable when it is necessary to modify the connection.

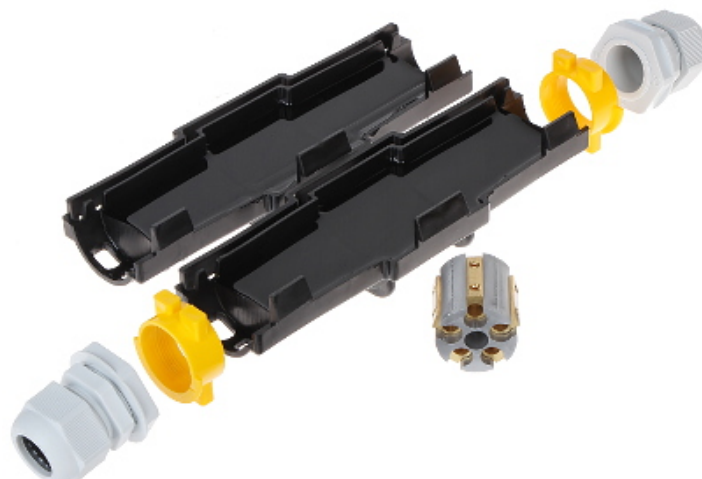


## SPECIFICATION

Voltage insulation:	1 kV
"Index of Protection":	IP68
Weight:	0.52 kg
Wire gauge:	max. 5 x 10 mm <sup>2</sup> @ IP68 max. 5 x 25 mm <sup>2</sup> @ IPx8
Internal dimensions:	180 x 45 x 36 mm
External dimensions:	275 x 72 x 65 mm
Manufacturer / Brand:	RayTech
Guarantee:	2 years

## PRESENTATION

Internal view:



DELTA-OPTI Monika Matysiak; <https://www.delta.poznan.pl>  
POL; 60-713 Poznań; Graniczna 10  
e-mail: delta-opti@delta.poznan.pl; tel: +(48) 61 864 69 60

connector:



Method of mounting:

:

In the kit:



Package:





DELTA-OPTI Monika Matysiak; <https://www.delta.poznan.pl>  
POL; 60-713 Poznań; Graniczna 10  
e-mail: [delta-opti@delta.poznan.pl](mailto:delta-opti@delta.poznan.pl); tel: +(48) 61 864 69 60