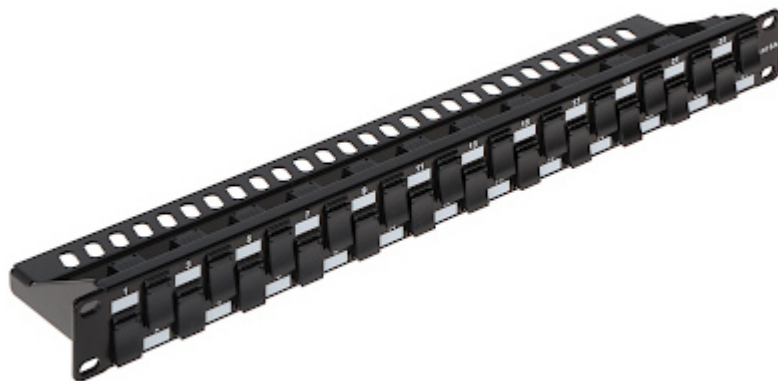


Code: PP-24/RJ-FX/6AC1

## PATCH PANEL KEYSTONE **PP-24/RJ-FX/6AC1**

Net: **35.65 USD** Gross: **43.85 USD**

Patch panel with KEYSTONE RJ-45 connectors.



### SPECIFICATION

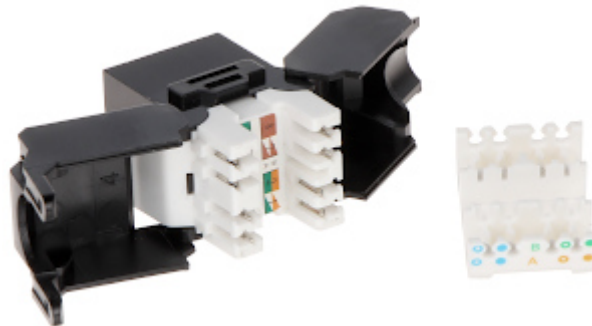
Number of ports:	24 pcs
Material:	Metal
Color:	Black
Application:	RACK 19", 1U
Main features:	<ul style="list-style-type: none"><li>• It is compatible with Category 6a</li><li>• Spring terminals for twisted-pair cable allow to quick assembly without any tools</li><li>• On the device mainboard there are holes to cables mounting using cable ties</li></ul>
Weight:	0.74 kg
Dimensions:	483 x 100 x 44 mm
Guarantee:	<b>3 years</b>

### PRESENTATION

Rear view:



RJ-45 connectors:



In the kit:

