

Code: BCS-TQ5200IR-V

AHD, HD-CVI, HD-TVI, PAL CAMERA **BCS-TQ5200IR-V** - 1080p 2.7 ... 13.5 mm - **MOTOZOOM**

Net: **389.00 PLN** Gross: **478.47 PLN**

Megapixel camera with 1/2.9" CMOS sensor and AHD / HD-CVI / HD-TVI / CVBS.

The AHD / HD-CVI / HD-TVI interface allows to transmission of analog video signal via coaxial cable in max. 8 Mpx (4K UHD) resolution. During transmission there are no delays and is maintained the original, high quality image.

Camera is according to IP67 Index of Protection norm. Attention! The camera default setting is HD-CVI standard. To change the camera standard you need use the PFM820 controller, available separately.



SPECIFICATION

Standard:	AHD / HD-CVI / HD-TVI / PAL
Sensor:	1/2.9 " Progressive Scan CMOS
Matrix size:	2.1 Mpx
Resolution:	1920 x 1080 - 1080p , 1280 x 720 - 720p , 960 x 576 - 960H, PAL
Video output:	AHD / HD-CVI / HD-TVI / CVBS, 1 Vpp / 75 Ω
Lens:	2.7 ... 13.5 mm - Motozoom The camera does not have auto-focus function
View angle:	<ul style="list-style-type: none">• 104 ° ... 28 ° (manufacturer data)• 100 ° ... 27 ° (our tests result)
S/N ratio:	> 65 dB
Range of IR illumination:	60 m
IR illuminator power adjustment:	Automatic
IR illuminator support:	ICR - Movable InfraRed filter
Main features:	<ul style="list-style-type: none">• Motozoom lens - The camera does not have auto-focus function• 2D-DNR - Digital Noise Reduction• BLC - Back Light Compensation• HLC - High Light Compensation (spot)• AGC - Automatic Gain Control• ICR - Movable InfraRed filter• Configurable Privacy Zones• Mirror - Mirror image• Auto White Balance• Sharpness - sharper image outlines

OSD menu:	✓
Power supply:	12 V DC / 640 mA
Power consumption:	≤ 7.7 W
Housing:	Compact, Aluminum
Color:	White
"Index of Protection":	IP67
Operation temp:	-40 °C ... 60 °C
Weight:	0.6 kg
Dimensions:	213 x 90 x 90 mm
Manufacturer / Brand:	BCS
Guarantee:	3 years

PRESENTATION

Front view:



Side view:



Mounting side view:



In the kit:



OUR TESTS

AHD:

Camera image at artificial illumination (about 30Lux):



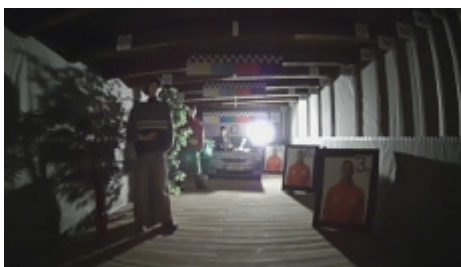
Camera image at night conditions with internal built-in IR illuminator on:



DELTA-OPTI Monika Matysiak; <https://www.delta.poznan.pl>
POL; 60-713 Poznań; Graniczna 10
e-mail: delta-opti@delta.poznan.pl; tel: +(48) 61 864 69 60



Camera image at direct strong light opposite to camera:



HD-CVI:

Camera image at artificial illumination (about 30Lux):



Camera image at night conditions with internal built-in IR illuminator on:



Camera image at direct strong light opposite to camera:



HD-TVI:

Camera image at artificial illumination (about 30Lux):





Camera image at night conditions with internal built-in IR illuminator on:



Camera image at direct strong light opposite to camera:

