

Code: APTI-H50V2-28W-L

AHD, HD-CVI, HD-TVI, CVBS CAMERA **APTI-H50V2-28W-L** 2Mpx / 5Mpx 2.8 mm

Net: **30.89 EUR** Gross: **37.99 EUR**

Megapixel camera with 1/3" CMOS sensor and AHD / HD-CVI / HD-TVI / CVBS.

The AHD / HD-CVI / HD-TVI interface allows to transmission of analog video signal via coaxial cable in max. 8 Mpx (4K UHD) resolution. During transmission there are no delays and is maintained the original, high quality image.

In the case of video transmission using a twisted pair cable and matching transformers (balun), be aware of the possibility of signal reflections and interfering signals. Setting the camera in PAL mode allows to obtain an image in 960H resolution. The appropriate signal format selection is done by tilting and holding the joystick for 5 s without entering to the OSD menu. Changing the signal to the NTSC in the camera causes loss of image in connected AHD/HD-CVI/HD-TVI recorder.

The camera doesn't have a B/W mode. Thanks to fit the camera in a very sensitive sensor and the LED illuminator emitting visible light in white, the device allows to obtain a clear, colorful image in all lighting conditions.

Attention! The camera is factory set to the resolution 2 Mpx (1080p).



SPECIFICATION

Standard:	AHD, HD-CVI, HD-TVI, CVBS
Sensor:	1/3 " Progressive Scan CMOS
Matrix size:	5 Mpx
Resolution:	<ul style="list-style-type: none">• 2592 x 1944 - 5 Mpx - AHD / HD-TVI,• 2560 z 1440 - 3.7 Mpx @ AHD / HD-CVI / HD-TVI,• 1920 x 1080 - 1080p @ AHD / HD-CVI / HD-TVI,• 960 x 576 - 960H, PAL
Lens:	2.8 mm
View angle:	<ul style="list-style-type: none">• 91 ° (manufacturer data)• 92 ° (our tests result)
White light LED illuminator range:	25 m
Video output:	AHD / HD-CVI / HD-TVI / CVBS, 1 Vpp / 75 Ω
Audio:	—
OSD menu:	✓

Main features:	<ul style="list-style-type: none"> • Possibility to turn off the LED illuminator • Automatic LED light intensity adjustment • D-WDR - Wide Dynamic Range • 3D-DNR - Digital Noise Reduction • BLC - Back Light Compensation • Sharpness - sharper image outlines • AGC - Automatic Gain Control • Auto White Balance • Motion Detection • Configurable Privacy Zones • Mirror - Mirror image
"Index of Protection":	IP67
Power supply:	12 V DC / 270 mA
Power consumption:	≤ 3.2 W
Housing:	Dome, Aluminum + Plastic
Vandal-proof:	—
Color:	White
Operation temp:	-20 °C ... 60 °C
Weight:	0.36 kg
Dimensions:	Ø 109 x 93 mm
Manufacturer / Brand:	APTI
Guarantee:	2 years

PRESENTATION

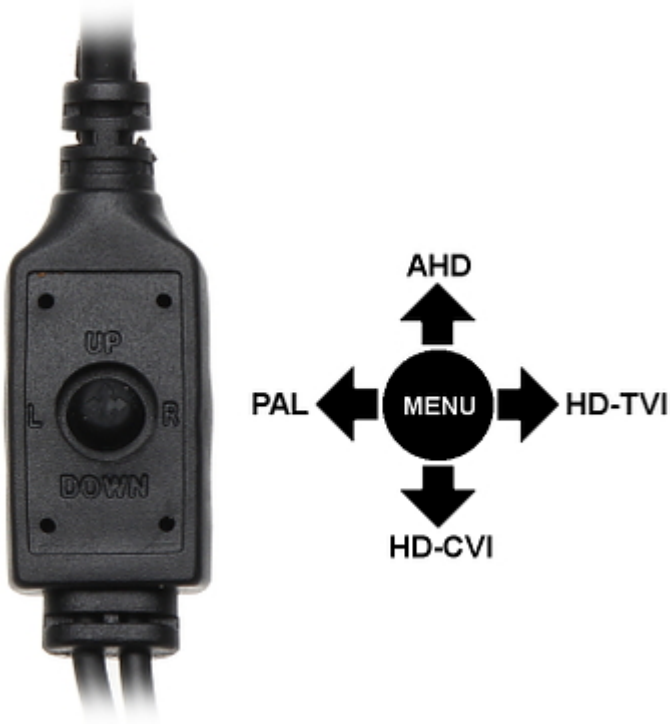
Camera is out from clamping ring:



Mounting side view:



The appropriate signal format selection is done by tilting and holding the joystick for 5 s without entering to the OSD menu. Changing the signal to the NTSC in the camera causes loss of image in connected AHD/HD-CVI/HD-TVI recorder:



In the kit:



OUR TESTS

AHD:

Camera image at artificial illumination (about 30Lux):



Camera image at night conditions with internal built-in LED illuminator on:



Camera image at direct strong light opposite to camera:



HD-CVI:



DELTA-OPTI Monika Matysiak; <https://www.delta.poznan.pl>
POL; 60-713 Poznań; Graniczna 10
e-mail: delta-opti@delta.poznan.pl; tel: +(48) 61 864 69 60

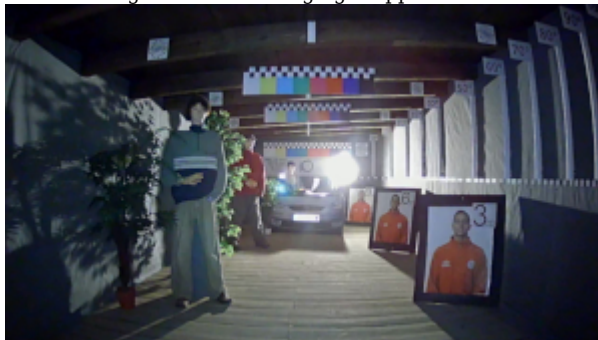
Camera image at artificial illumination (about 30Lux):



Camera image at night conditions with internal built-in LED illuminator on:



Camera image at direct strong light opposite to camera:

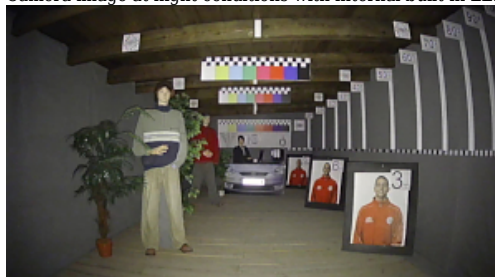


HD-TVI:

Camera image at artificial illumination (about 30Lux):



Camera image at night conditions with internal built-in LED illuminator on:



Camera image at direct strong light opposite to camera:

