

Code: APTI-T21V3-2812W

## CAMERA APTI-T21V3-2812W STANDARD: HD-TVI - 1080p 2.8 ... 12 mm

Net: 53.95 EUR Gross: 53.95 EUR

Megapixel camera with 1/2.7" OmniVision OV2710 CMOS sensor and HD-TVI (High Definition Transport Video Interface). The HD-TVI interface allows to transmission of analog video signal via coaxial cable at resolutions up to 1080p. It enables the transmission of HD resolution images for even 500 m distance with keeping the low costs of the installation. During transmission there are no delays and is maintained the original, high quality image.



### SPECIFICATION

Standard:	HD-TVI
Sensor:	1/2.7 " OmniVision OV2710 CMOS
Digital Image Processor:	FH8531+TP2801
Matrix size:	2.1 Mpx
Resolution:	1920 x 1080 - 1080p @ HD-TVI
Range of IR illumination:	30 m
IR illuminator power adjustment:	Automatic
Lens:	2.8 ... 12 mm, 2.0 Mpx
View angle:	<ul style="list-style-type: none"><li>• 88 ° ... 25 ° (manufacturer data)</li><li>• 95 ° ... 37 ° (our tests result)</li></ul>
S/N ratio:	> 50 dB
Video output:	HD-TVI - BNC socket
Main features:	<ul style="list-style-type: none"><li>• ICR - Movable InfraRed filter</li><li>• 2-DNR - Digital Noise Reduction</li><li>• Auto White Balance</li><li>• IR illuminator optimization</li><li>• AGC - Automatic Gain Control</li></ul>
OSD menu:	—
"Index of Protection":	IP66
Power supply:	12 V DC / 440 mA
Housing:	Metal
Color:	White
Vandal-proof:	✓

DELTA-OPTI Monika Matysiak; <https://www.delta.poznan.pl>  
POL; 60-713 Poznań; Graniczna 10  
e-mail: [delta-opti@delta.poznan.pl](mailto:delta-opti@delta.poznan.pl); tel: +(48) 61 864 69 60

Operation temp:	-20 °C ... 50 °C
Weight:	0.62 kg
Dimensions:	Ø 120 x 87 mm
Country of origin:	China
Guarantee:	2 years

## PRESENTATION

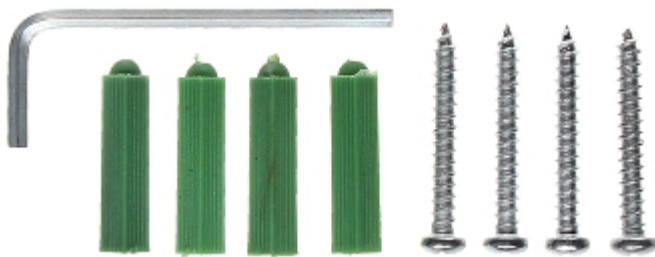
Camera view after remove the Dome cover:



Mounting side view:



In the kit:

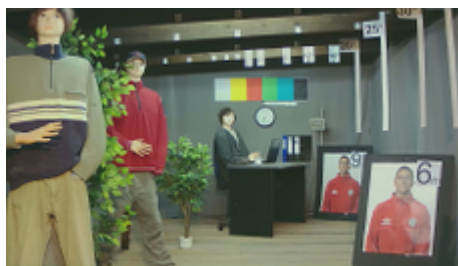


## OUR TESTS

Camera image at artificial illumination (about 30Lux):



DELTA-OPTI Monika Matysiak; <https://www.delta.poznan.pl>  
 POL; 60-713 Poznań; Graniczna 10  
 e-mail: delta-opti@delta.poznan.pl; tel: +(48) 61 864 69 60



Camera image at night conditions with internal built-in IR illuminator on:



Camera image at direct strong light opposite to camera:



## PACKAGE

Dimensions (L x W x H): 0x0x0 mm	Gross Weight: 0 kg
----------------------------------	--------------------

