

Code: CS-R5-50H

OPTICAL REFLECTOMETER (OTDR) WITH CCTV TESTER CS-R5-50H

Net: 931.66 EUR Gross: 931.66 EUR

Optical reflectometer (OTDR) with a multi-functional AHD, HD-CVI, HD-TVI, IP camera tester with many additional functions necessary during initialization CCTV and fiber optic installations.



SPECIFICATION

Optical time-domain reflectometer (OTDR):	<ul style="list-style-type: none">• Optical wavelength : 1310 nm / 1550 nm,• Dynamic range : 28/26 dB• Wide measuring range ≤ 105 km• Accuracy : $\pm (1 \text{ m} + 5 \times 10^{-5} \times \text{distance} + \text{sampling interval})$• Connectors : FC / SC• Measurement duration : 5 s, 10 s, 15 s, 30 s, 1 min, 2 min, 3 min
Optical power measurement:	Optical power measurement in fiber optic networks (ST and SC adapters) Optical wavelength : 850, 1300, 1310, 1490, 1550, 1625 nm Range : -70 ... +10 dBm
VLS (VFL) - Visual Fault Locator of fiber cable:	Laser LD, 650 nm, 10 mW Range 8 km
Video standard:	<ul style="list-style-type: none">• AHD - 8 Mpx,• HD-CVI - 8 Mpx,• HD-TVI - 8 Mpx,• TCP/IP - 8K,• CVBS - PAL / NTSC
Display:	5.4 " Retina - capacitive touch screen, 1920 x 1152 px
Video input:	<ul style="list-style-type: none">• 1 pcs AHD / HD-CVI / HD-TVI / CVBS - BNC socket,• 1 pcs HDMI, 60 fps, 4K• 1 pcs VGA
Video output:	1 pcs HDMI, 30 fps, 4K
Port LAN:	2 pcs - PoE cameras and switches support
Audio input:	1 pcs Mini Jack
Audio output:	1 pcs Mini Jack
Video signal level meter:	—
Video signal generator:	—
Serial ports:	RS-485

DELTA-OPTI Monika Matysiak; <https://www.delta.poznan.pl>
POL; 60-713 Poznań; Graniczna 10
e-mail: delta-opti@delta.poznan.pl; tel: +(48) 61 864 69 60

Protocols:	Support for over 30 RS485 protocols : Pelco-D, Pelco-P, YAAN, YAAN-O, YAAN-1, SAMSUNG, PANASONIC, Lilin-FAST, Lilin-MLP2, MOLYNX, MINKING A01, Fastrax, CBC, LC-NEW, WV-CS850, SONY-EVI, LG-MULTIX, DAT-SD, VICON, Vcltp, DH-YTC 06, Santachi, Bosch OSRD, TeleEye DM2, HD 600, Hikvision, KALATEL ASC, AD 168(M-B), SAMSUNG SPD, Siemens, Cohu, MINKING B01, ALEC
Baud rates:	150, 300, 600, 1200, 2400, 4800, 9600, 19200, 38400, 115200 b/s
LAN (twisted-pair) or telephone cables testing:	UTP cables or phone lines connecting test with RJ-45 connectors
RS-485, lines test:	Data analysis from control device (the commands are displayed in hexadecimal)
Wi-Fi Module:	✓
Identification the wire in the group of wires:	✓
Audio test:	✓
Digital multimeter:	—
TDR reflectometer:	Detecting and locating a cable break or short circuit, 180 m (max)
Operation as power source:	<ul style="list-style-type: none"> • 5 V DC / 2 A from USB port • 12 V DC / 3 A • 24 V DC / 2 A • 48 V (PoE, LAN), 24 W
Battery power supply:	<ul style="list-style-type: none"> • Li-Ion battery 5200 mAh • 12 V DC / 2 A (power adapter included)
Estimated battery operation time:	max. 10 hours
Operation:	Graphical menu - touch control and by using the buttons
Main features:	<ul style="list-style-type: none"> • Optical time-domain reflectometer (OTDR) • AHD cameras test • HD-CVI cameras test • HD-TVI cameras test • PAL/NTSC cameras test • IP cameras test - Supported image compression methods : H.265, H.264, MJPEG • Searching and view of IP cameras compatible with Onvif • Motor units and PTZ (Speed Dome) cameras control • IP cameras view from embedded applications - DH test tool, Hik test tool, UNV Test Tool, HuaWei Tool, TP-Link tool • EZView • Embedded Internet browser - Google Chrome • LAN connections monitoring • IP addresses scanner • PING - test the link using ICMP packets • Detection of the connected port in switch • LAN (twisted-pair) cables testing • The Cable tracer application - easy cable location in a disordered bundle • PoE cameras and switches support • PoE power meter • DC 5V / 12V / 24V / 48V power source • TDR reflectometer • Optical power meter • VLS (VFL) - Visual Fault Locator of fiber cable • Data monitor - serial port data analysis RS-485 • Audio test • Hotspot - Wi-Fi • Playback the records • VLC Media Player application installed - the ability to play multimedia files in many popular formats (.mp3, .mp4, .avi, .mpeg and others) • Calculator • Quickoffice package installed - creation and reading of .docx text documents, .xlsx spreadsheets and .pptx multimedia presentations • Flashlight built-in • The ability to change the display theme and background • Android 10
Operation temp:	-10 °C ... 50 °C
Permissible relative humidity:	30 % ... 90 %
Weight:	0.87 kg
Dimensions:	212 x 148 x 49 mm



Supported languages:	Polish, English, Bulgarian, Czech, French, Greek, Spanish, German, Portuguese, Russian, Turkish, Italian
Guarantee:	2 years

PRESENTATION

Front panel (main menu options visible):



Bottom view:



Top view:



Rear view:

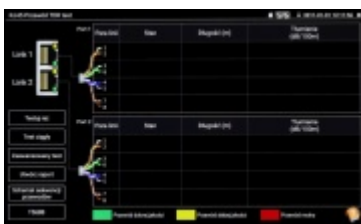
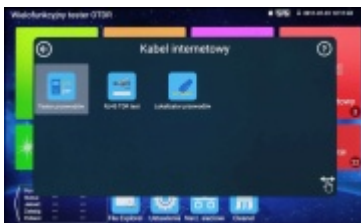
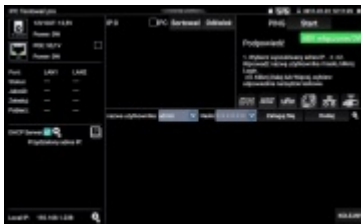
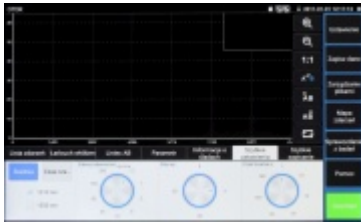


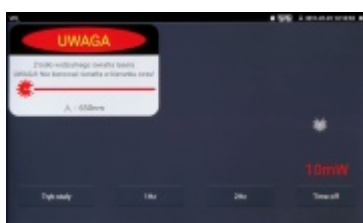
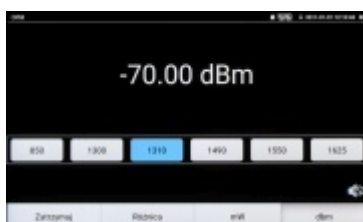
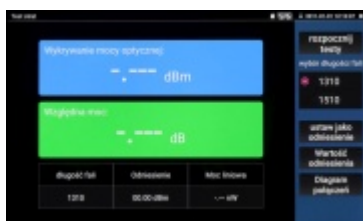
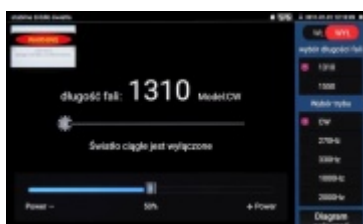
Place for battery:

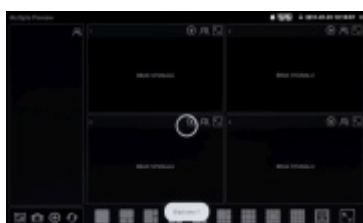
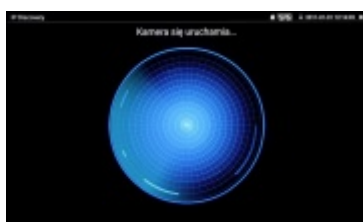
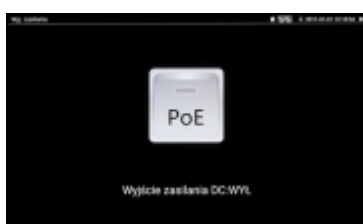
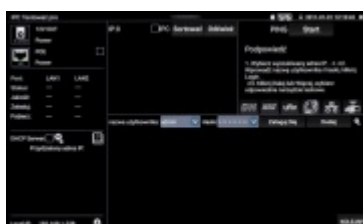


Main menu:

DELTA-OPTI Monika Matysiak; <https://www.delta.poznan.pl>
POL; 60-713 Poznań; Graniczna 10
e-mail: delta-opti@delta.poznan.pl; tel: +(48) 61 864 69 60







Typ	Typowy stan	Opisowy stan	Wzrost	Palenie	Staż	Temperatura	Staż
LAMP	x						
LAMP	x						

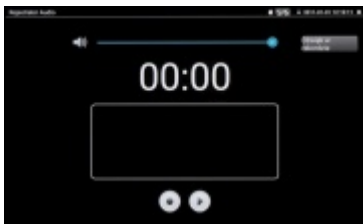
Wzrost	Palenie	Staż	Temperatura	Staż	Temperatura	Staż
LAMP	x					
LAMP	x					

Wzrost	Palenie	Staż	Temperatura	Staż	Temperatura	Staż
LAMP	x					
LAMP	x					



Model	Wzrost	Palenie	Staż	Temperatura	Staż	Temperatura	Staż
LAMP	x						
LAMP	x						





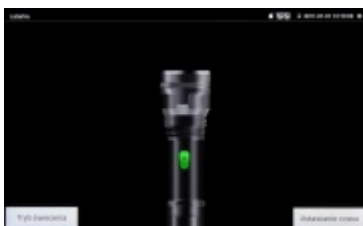
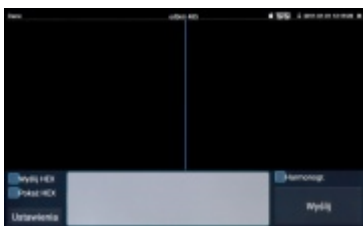
Label ID: 102 101 01

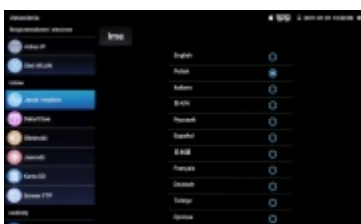
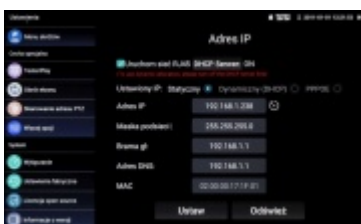
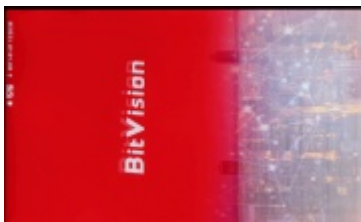
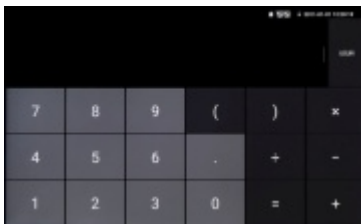
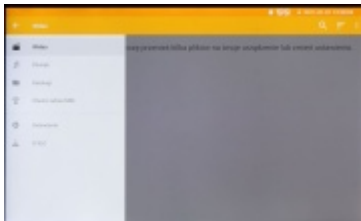
Label name: John

Label type: 11111

IP Address: 192.168.1.1

Read Read Play History





In the kit:



DELTA-OPTI Monika Matysiak; <https://www.delta.poznan.pl>
POL; 60-713 Poznań; Graniczna 10
e-mail: delta-opti@delta.poznan.pl; tel: +(48) 61 864 69 60



The tester with accessories housed in a handy bag:



OUR OPINIONS



- Everything you need to work is the compact, small, universal device.
- Perfect to build and create the CCTV system.

PACKAGE

Dimensions (L x W x H): 0x0x0 mm	Gross Weight: 0 kg
----------------------------------	--------------------