

Code: EPRADO-R19-22U/600FW-BLUE

## STANDING RACK CABINET **EPRADO-R19-22U/600FW-BLUE**

Net: 3 248.84 NOK Gross: 3 248.84 NOK

More and more home devices to LAN, RTV, CCTV installations are made with a view to the RACK system, so that their installation is aesthetically pleasing, and that devices are protected against accidental mechanical damages.

The EPRADO-R19-22U/600FW-BLUE cabinet is suitable for mounting all sorts of devices in standard 19" rack housings. Ideal solution for installing DVRs, power units, splitters, headends, network devices, etc. Inside the cabinet can be also place the devices that are not in standard RACK-19" housings, for example DVRs, multiswitches, RTV-SAT amplifiers, modulators. For this purpose the user should mount additional shelf/shelves available for RACK cabinet.

The RACK cabinet has many openings ensuring adequate air circulation. Additionally, it is possible to install fans to increase the ventilation.

**Attention!** The EPRADO-R19-22U/600FW-BLUE cabinet is intended for self-assembly.



### SPECIFICATION

Internal width:	19 "
Internal height:	22 U
Internal depth:	335 mm (max)
External width:	600 mm
External height:	1170 mm
External depth:	600 mm
Holes for fan coolers:	—
Bearing capacity:	1000 kg
Color:	Black RAL9004
Door:	<ul style="list-style-type: none"><li>• Front: glass</li><li>• Side: metal, snap-in</li><li>• Rear: metal, hinges</li></ul>
Main features:	<ul style="list-style-type: none"><li>• From the top there are 4 cable entries with dimensions of 270 x 65 mm and 4 with dimensions of 245 x 65 mm</li><li>• The floor has 6 cable entries with dimensions of 270 x 65 mm</li><li>• Removable side panels</li><li>• Possibility to mount the door as left or right</li><li>• Four rack rails for mounting devices (2x front, 2x rear)</li><li>• 4 keys included</li><li>• The cabinet is mounted on wheels to allow it to be moved or on 4 legs</li></ul>
Weight:	54.1 kg
Manufacturer / Brand:	EPRADO

DELTA-OPTI Monika Matysiak; <https://www.delta.poznan.pl>  
POL; 60-713 Poznań; Graniczna 10  
e-mail: delta-opti@delta.poznan.pl; tel: +(48) 61 864 69 60

Guarantee:

3 years

## PRESENTATION

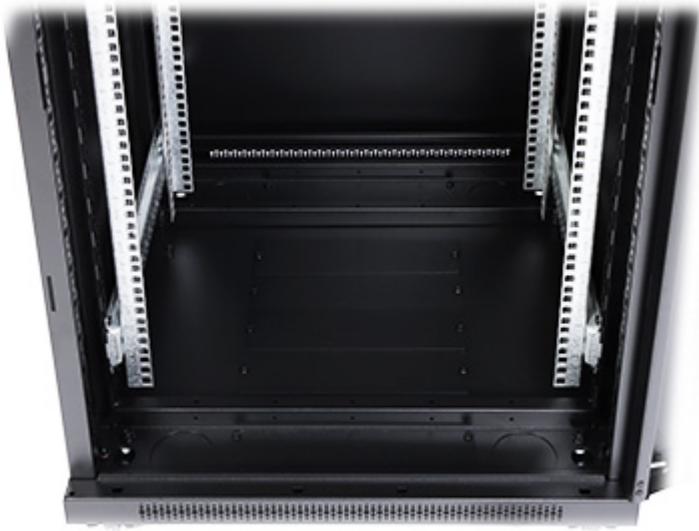


Internal view:



The floor has 6 cable entries with dimensions of 270 x 65 mm:

DELTA-OPTI Monika Matysiak; <https://www.delta.poznan.pl>  
POL; 60-713 Poznań; Graniczna 10  
e-mail: [delta-opti@delta.poznan.pl](mailto:delta-opti@delta.poznan.pl); tel: +(48) 61 864 69 60



Rear view:





Top view:



Side view (without panels installed):





The cabinet is mounted on wheels to allow it to be moved or on 4 legs:



In the kit:



## PACKAGE

DELTA-OPTI Monika Matysiak; <https://www.delta.poznan.pl>  
POL; 60-713 Poznań; Graniczna 10  
e-mail: [delta-opti@delta.poznan.pl](mailto:delta-opti@delta.poznan.pl); tel: +(48) 61 864 69 60

Dimensions (L x W x H): 0x0x0 mm	Gross Weight: 0 kg
----------------------------------	--------------------

