

Code: GSM-X-LTE

## GSM COMMUNICATION MODULE **GSM-X-LTE** SATEL

Net: 1 060.88 DKK Gross: 1 060.88 DKK

The GSM-X-LTE communication module enables using the 4G GSM network as a main or backup communication channel for the alarm control panel. The device is seen by the alarm control panel as an analog telephone line. The module independently monitors the status of both the telephone network and the GSM connection via both SIM cards, allowing the selection of the optimal transmission channel. The device's compatibility with LTE mobile networks ensures the highest quality and reliability of data transmission.

Device makes possible to supervise operation of various devices, including alarm control panels without telephone communicator. Owing to its analog inputs, the GSM-X-LTE can execute functions which are used in automation systems. The product also allows to control the state of outputs using the SMS messages.

The device's capabilities can be extended with an Ethernet network connection using a dedicated GSM-X-ETH module (available separately).



### SPECIFICATION

Alarm inputs:	8 pcs
Alarm outputs:	4 pcs
Telephone numbers to reporting events:	max. 8
Event codes sending messages type:	CLIP, PUSH, SMS, GPRS, LTE
Main features:	<ul style="list-style-type: none"><li>• Two SIM cards support</li><li>• Simulation of analog telephone line over GSM network</li><li>• Conversion of PAGER messages to SMS</li><li>• Remote configuration of module via GPRS</li><li>• Remote programming of alarm control panels via GPRS - "remote RS-232 port" function</li><li>• Remote update of module software</li><li>• TAMPER switch indicating open the cover</li><li>• 4G/3G/2G GSM network operation</li></ul>
Power supply:	12 V DC / 520 mA
Operation temp:	-10 ... 55 °C
Weight:	0.27 kg
Dimensions:	158 x 126 x 46
Manufacturer / Brand:	SATEL
Guarantee:	2 years

### PRESENTATION

Rear view:

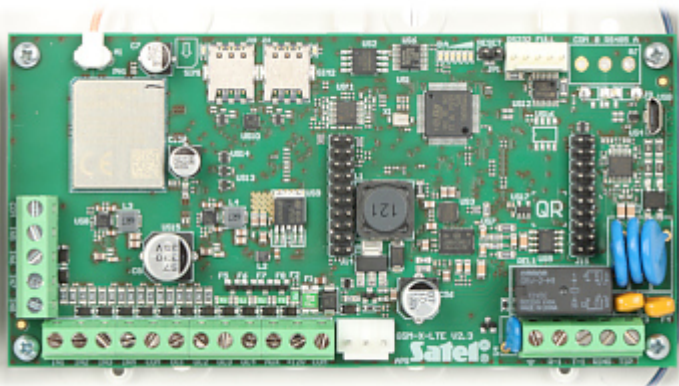
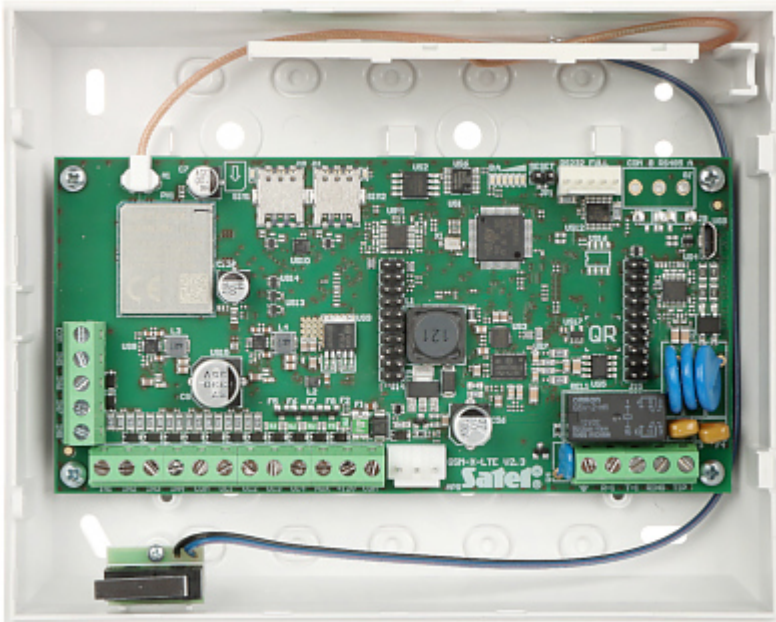


DELTA-OPTI Monika Matysiak; <https://www.delta.poznan.pl>  
POL; 60-713 Poznań; Graniczna 10  
e-mail: [delta-opti@delta.poznan.pl](mailto:delta-opti@delta.poznan.pl); tel: +(48) 61 864 69 60

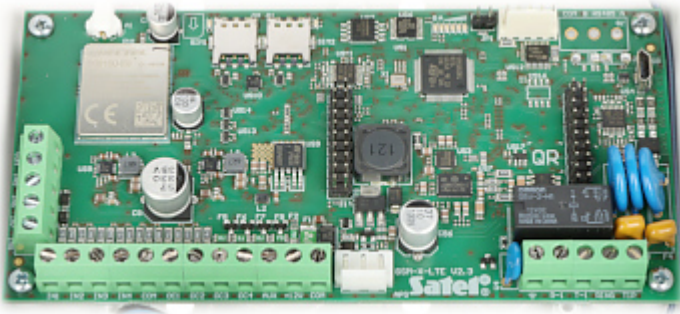


Internal view of the housing:





Connectors:



## PACKAGE

Dimensions (L x W x H): 0x0x0 mm	Gross Weight: 0 kg
----------------------------------	--------------------