

Code: INT-KLCDK-GR

## KEYPAD FOR ALARM CONTROL PANEL INT-KLCDK-GR SATEL

Net: 114.32 EUR Gross: 114.32 EUR

The INT-KLCDK-GR keypad is intended for daily operations and programming the INTEGRA series alarm control system. With the LCD display showing text messages, even advanced functionalities of the alarm control unit are simple and convenient.



### SPECIFICATION

Support:	INTEGRA
Main features:	<ul style="list-style-type: none"><li>• Green backlight of the keys</li><li>• 2 Inputs</li><li>• easy operation of the multi-zone systems</li><li>• LEDs indicating device operation state</li><li>• Alarms: keypad hold-down PANIC, FIRE and AUX</li><li>• Buzzer for acoustic signaling of some system events</li><li>• Panel communication loss indication</li><li>• RS-232 port allows to programming using the PC with GUARDX software installed</li><li>• Microswitch as tamper contact</li></ul>
Power supply:	12 V DC
Current consumption:	max. 110 mA
Operation temp:	-10 °C ... 55 °C
Weight:	0.32 kg
Dimensions:	160 x 126 x 35 mm
Manufacturer / Brand:	SATEL
Guarantee:	2 years

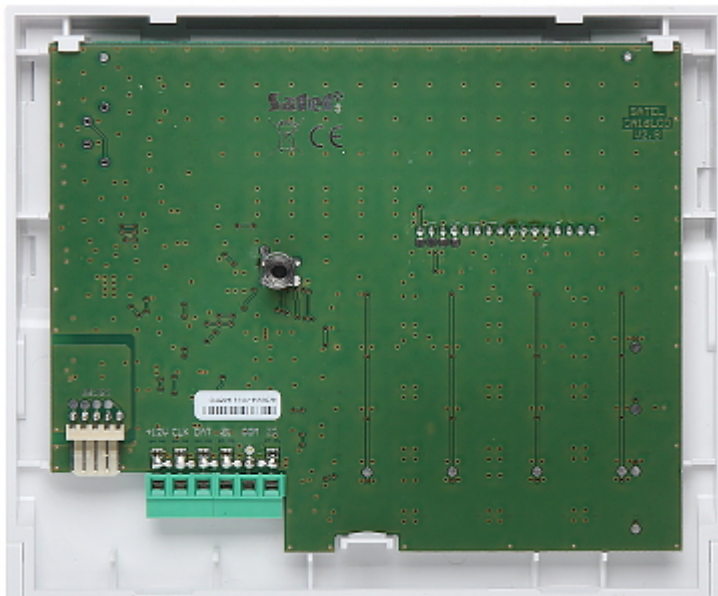
### PRESENTATION

Front panel:

DELTA-OPTI Monika Matysiak; <https://www.delta.poznan.pl>  
POL; 60-713 Poznań; Graniczna 10  
e-mail: delta-opti@delta.poznan.pl; tel: +(48) 61 864 69 60



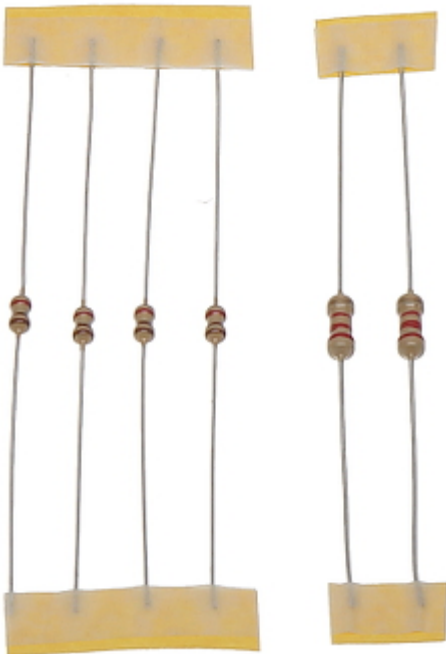
View after remove the cover:



Mounting side view:



In the kit:



## PACKAGE

Dimensions (L x W x H): 0x0x0 mm	Gross Weight: 0 kg
----------------------------------	--------------------