

Code: PERFECTA-32-SET-A/IT

ALARM CONTROL PANEL **PERFECTA-32-SET-A/IT** SATEL

Net: **231.30 EUR** Gross: **231.30 EUR**

The PERFECTA-32-SET-A/IT alarm system kit including alarm control panel, the OPU-4-P enclosure and GSM antenna.

The alarm control panels of PERFECTA series are intended for security of small and medium-sizes facilities, such as flats, single-family houses, segments in terraced houses, offices, small companies, etc. They provide protection in accordance with the requirements of Grade 2 EN 50131.

The control panel in addition to basic, traditional methods of system control offers also, among other things functional and intuitive application for mobile devices PERFECTA CONTROL.

Built-in GSM/GPRS module gives wide possibilities: enables cooperation with mobile application, with PUSH messages support, remote configuration with using the PERFECTA Soft application, events monitoring (eg. to the monitoring station of security agency), voice messaging, control by SMS and audio verification (listening the sounds from the protected object). Two nano-SIM cards are supported, it ensures the continuity of communication: when occurs any problems with s signal range of first operator, automatically selects the second card.



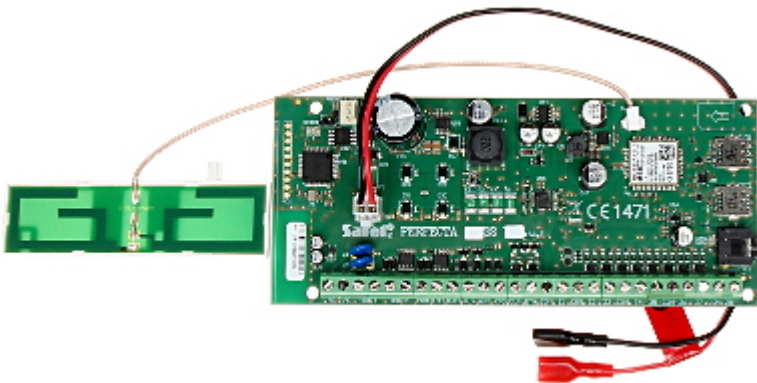
SPECIFICATION

Mainboard inputs:	8 pcs - programmable
Mainboard outputs:	4 pcs - programmable
Maximal number of supported inputs:	32 pcs - programmable
Maximal number of supported outputs:	12 pcs - programmable
Maximal load:	2 A
Users + admins:	15 + 1
Partitions:	—
Zones:	2
Expansion modules:	✓
Events memory:	3584
Timers:	8
Supported keypads:	max. 4 pcs
Supporting the wireless ABAX system via bus:	—
Keyboard included:	—
Enclosure included:	✓
Protection class (Grade):	2

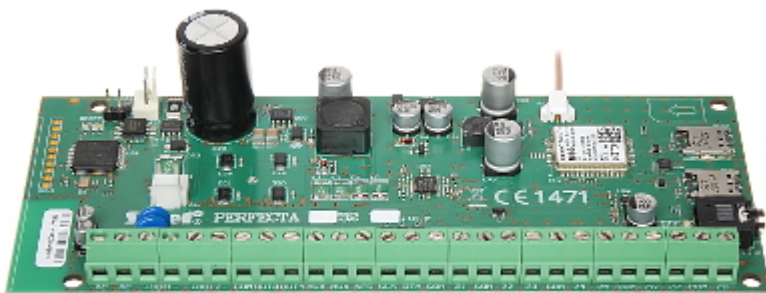
Main features:	<ul style="list-style-type: none"> • Built-in GSM/GPRS module with 2 SIM slots (SMS, monitoring to the station, mobile application, PUSH messaging) • Built-in voice module (playing voice messages on the need for telephone messaging) - 16 voice messages • Built-in module of alarm acoustic verification (listening the sounds) • 3 arming modes for each zone • The ability to assign the input to the two zones • Controlled by the user or by using timers • Communication bus for connecting the keypads (PRF-LCD) and extension modules (INT-E, INT-O, INT-ORS) • Edition of the names (users, zones, inputs, outputs and modules) for easy control of the system and its monitoring • Built-in advanced power adapter with extended diagnostics - 2 power outputs • Vibration detectors and rollerblinds detectors support • The ability to firmware upgrade
Power supply:	18 V AC
Operation temp:	-10 °C ... 55 °C
Permissible relative humidity:	93 %
Dimensions:	160 x 68 mm - PCB 283 x 263 x 91 mm - Housing
Weight:	1.20 kg (with enclosure and accessories)
Supported languages:	Italian
Manufacturer / Brand:	SATEL
Guarantee:	2 years

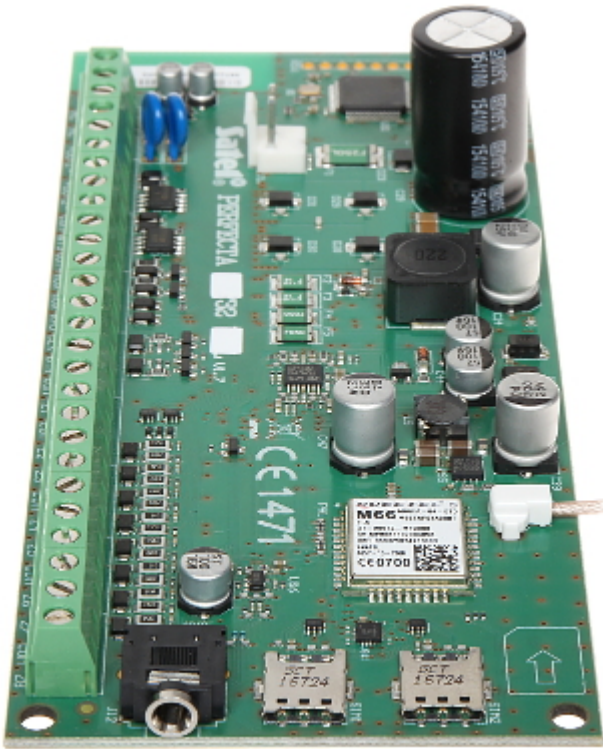
PRESENTATION

Control panel mainboard:



Connectors:

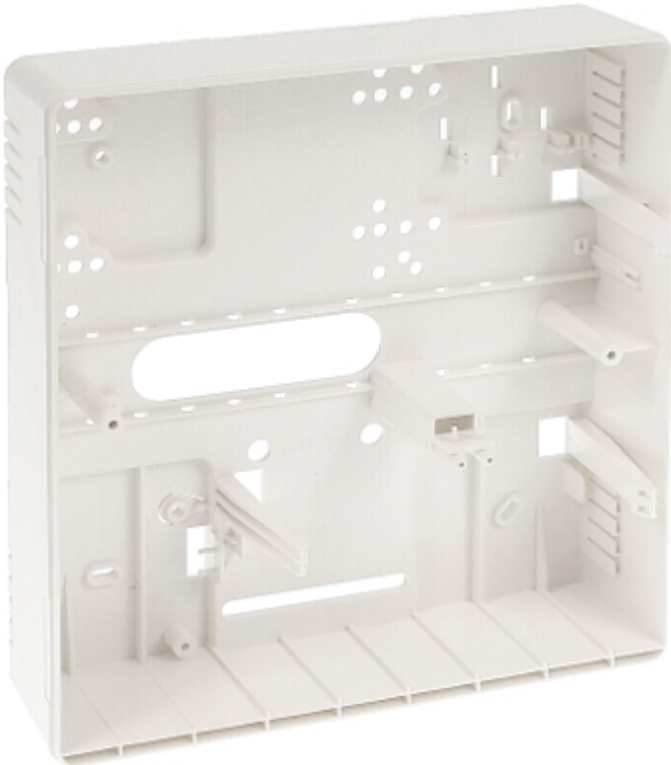




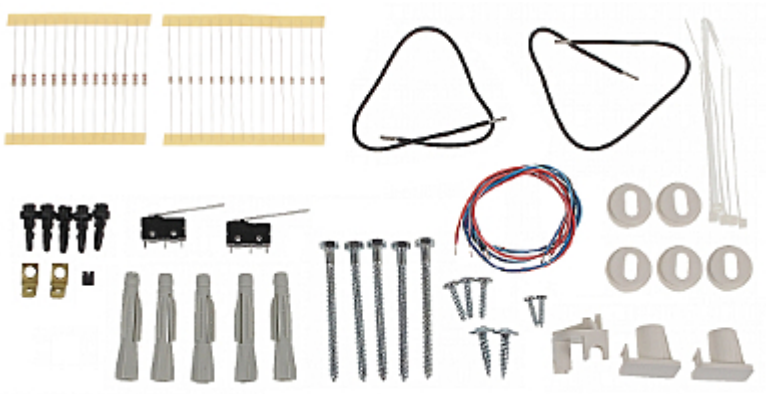
Housing:



Internal view of the housing:



In the kit:



PACKAGE

Dimensions (L x W x H): 0x0x0 mm	Gross Weight: 0 kg
----------------------------------	--------------------



DELTA-OPTI Monika Matysiak; <https://www.delta.poznan.pl>
POL; 60-713 Poznań; Graniczna 10
e-mail: delta-opti@delta.poznan.pl; tel: +(48) 61 864 69 60