

Code: IPC-HDBW5449R-ASE-NI-0360B

IP VANDALPROOF CAMERA **IPC-HDBW5449R-ASE-NI-0360B** Full-Color - 4 Mpx 3.6 mm DAHUA

Net: **506.43 EUR** Gross: **506.43 EUR**

IP camera with efficient H.264 / H.265 image compression algorithm for clear and smooth video streaming at maximal resolution of 2688 x 1520 (4.0 MPx).

PoE powering possibility, compatible with the 802.3af standard makes the device more universal and easier to install. Camera is according to IP67 Index of Protection norm. The device is equipped with ePoE technology which enables transmission up to 800 m at a speed of 10 Mb/s or 300 m at a speed of 100 Mb/s via cat. 5e twisted-pair.



SPECIFICATION

| | |
|---------------------------|---|
| Standard: | TCP/IP |
| Sensor: | 1/1.8 " Progressive Scan CMOS |
| Matrix size: | 4 Mpx |
| Resolution: | 2688 x 1520 - 4 Mpx , 2560 x 1440 - 3.7 Mpx , 2304 x 1296 - 3 Mpx , 1920 x 1080 - 1080p , 1280 x 960 - 1.3 Mpx , 1280 x 720 - 720p |
| Lens: | 3.6 mm |
| View angle: | <ul style="list-style-type: none">• 93 ° (manufacturer data)• 88 ° (our tests result) |
| RS-485 interface: | — |
| Memory card slot: | Micro SD memory cards up to 256GB support (possible local recording) |
| Image compression method: | H.265+ / H.265 / H.264+ / H.264 / MJPEG |
| Alarm inputs / outputs: | 1 / 1 |
| Audio: | <ul style="list-style-type: none">• External microphone input• Audio output• Bi-directional audio streaming support• Audio detection |
| Bitrate: | 32 ... 8192 kbps - H.264 19 ... 8192 kbps - H.265 |
| Main stream frame rate: | 25 fps @ 4 Mpx |
| Network interface: | 10/100 Base-T (RJ-45) |

DELTA-OPTI Monika Matysiak; <https://www.delta.poznan.pl>
POL; 60-713 Poznań; Graniczna 10
e-mail: delta-opti@delta.poznan.pl; tel: +(48) 61 864 69 60

| | |
|--------------------------------|--|
| Network protocols: | IPv4/IPv6, HTTP, HTTPS, TCP, UDP, ARP, RTP, RTSP, RTCP, RTMP, SMTP, FTP, SFTP, DHCP, DNS, DDNS, QoS, UPnP, NTP, Multicast, ICMP, IGMP, NFS, PPPoE, IEEE 802.1x, SNMP |
| WEB Server: | Built-in |
| Max. number of on-line users: | 20 |
| ONVIF: | 18.06 |
| Main features: | <ul style="list-style-type: none"> • WDR - 140 dB - Wide Dynamic Range • 3D-DNR - Digital Noise Reduction • ROI - improve the quality of selected parts of image • F-DNR (Defog) - Reduction of image noise caused by precipitation • BLC/HLC - Back Light / High Light Compensation • Possibility to change the resolution, quality and bit rate • Motion Detection • Configurable Privacy Zones • Mirror - Mirror image • Heat map - the selection in the image by corresponding colors the areas with different traffic • IVS analysis : crossing the line (tripwire), intrusion - classification of people and vehicles, fast moving, loitering detection, illegal parking, detection of people gathering, people counting - detection and maintenance of 4 independent areas, abandoned/missing object, scene changing, face detection |
| Mobile phones support: | Port no.: 37777 or access by a cloud (P2P) <ul style="list-style-type: none"> • Android: Free application DMSS • iOS (iPhone): Free application DMSS |
| Default admin user / password: | admin / - The administrator password should be set at the first start |
| Default IP address: | 192.168.1.108 |
| Web browser access ports: | 80, 37777 |
| PC client access ports: | 37777 |
| Mobile client access ports: | 37777 |
| Port ONVIF: | 80 |
| RTSP URL: | rtsp://admin:hasło@192.168.1.108:554/cam/realmonitor?channel=1&subtype=0 - Main stream rtsp://admin:hasło@192.168.1.108:554/cam/realmonitor?channel=1&subtype=1 - Sub stream |
| Power supply: | <ul style="list-style-type: none"> • PoE (802.3af), • ePoE, • 12 V DC / 370 mA |
| Power consumption: | ≤ 4.4 W |
| Housing: | Dome - Metal |
| Color: | White |
| "Index of Protection": | IP67 |
| Vandal-proof: | IK10 |
| Operation temp: | -30 °C ... 60 °C |
| Weight: | 0.45 kg |
| Dimensions: | Ø 122 x 90 mm |
| Supported languages: | Polish, English, Czech, French, Spanish, Dutch, German, Portuguese, Russian, Italian |
| Manufacturer / Brand: | DAHUA |
| Guarantee: | 3 years |

PRESENTATION

Camera view after remove the Dome cover:



DELTA-OPTI Monika Matysiak; <https://www.delta.poznan.pl>
 POL; 60-713 Poznań; Graniczna 10
 e-mail: delta-opti@delta.poznan.pl; tel: +(48) 61 864 69 60



Memory card slot:



Mounting dimensions:



Camera connectors:



Connectors description:



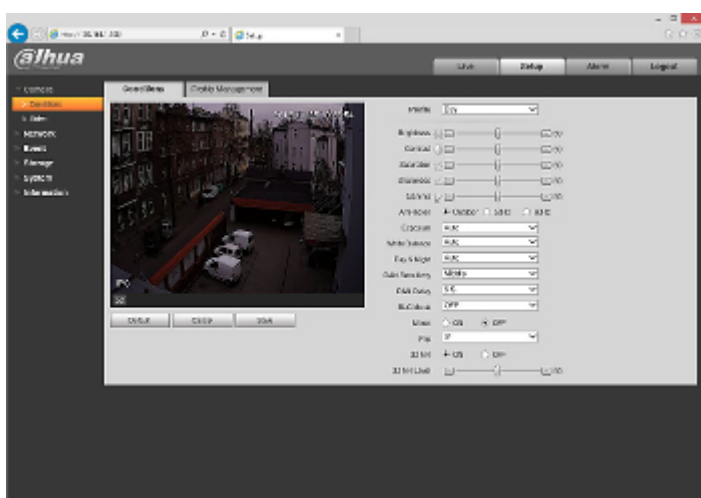
See how to initialize DAHUA cameras:

:

In the kit:



Example captures of device interface:



OUR TESTS

Camera image at artificial illumination (about 30Lux):



Camera image at direct strong light opposite to camera:



Camera image at night conditions, at different illumination values show below:

10 LUX:



1 LUX:



0.1 LUX:



0.01 LUX:



0.001 LUX:



PACKAGE

| | |
|----------------------------------|--------------------|
| Dimensions (L x W x H): 0x0x0 mm | Gross Weight: 0 kg |
|----------------------------------|--------------------|