

Code: LUMENA-161-54

# PAL SPEED DOME CAMERA INDOOR **LUMENA-161-54** 650 TVL 3.6 ... 36 mm

Net: **200.06 EUR** Gross: **200.06 EUR**



Indoor speed dome camera in ABS plastic housing, equipped with high resolution Sony sensor.

The LUMENA-161-54 is equipped with adaptive IR illuminator with range up to 50 m. 50m. The illumination power is auto adjusted based on outdoor light level, and the illumination angle is depended on lens zoom settings.

ICR - The movable IR filter allows to perfect colors reproduction in daylight and wide gray-scale with high sharpness of the image at night mode. Camera works very well with external IR illuminators.

Camera is designed to ceiling mounting.

## SPECIFICATION

Standard:	PAL
Sensor:	1/4 " Sony CCD
Resolution:	650 TVL
Lens:	3.6 ... 36 mm
View angle:	53 ° ... 5.7 °
Optical zoom:	x 10
Range of IR illumination:	50 m
Rotation speed depending on ZOOM level:	✓
Video output:	1 Vpp / 75 Ω
Image stabilization:	—
Preset rotation speed:	max. 150 °/s
Rotation speed (manual control):	0.1 °/s ... 50 °/s (horizontal) 0.1 °/s ... 50 °/s (vertical)
Horizontal rotation range:	360 ° continuous
Auto patrol:	4 groups, each per 16 points - camera movement among max. 16 presets with set stop time and movement speed
Vertical rotation range:	-1 ° ... 93 °
PTZ control:	Via interface RS-485

DELTA-OPTI Monika Matysiak; <https://www.delta.poznan.pl>  
POL; 60-713 Poznań; Graniczna 10  
e-mail: [delta-opti@delta.poznan.pl](mailto:delta-opti@delta.poznan.pl); tel: +(48) 61 864 69 60

Protocols:	Pelco-D, Pelco-P (auto detection)
Auto IR illuminator:	Adaptive adjusting of the IR illuminator power to the lens zoom and outdoor light conditions
Baud rates:	1200, 2400, 4800, 9600 bps
Park action:	Call the set function (tour, scan, etc.) after specified dwell time
Number of presets:	128
Horizontal scan:	✓ - Between two points with adjusted speed
Protections:	Overvoltage
Power supply:	12 V DC / 2 A (power adapter included)
Power consumption:	20 W
Camera connectors:	Video - socket BNC Power supply - socket 2.1/5.5 mm RS-485 - pair of wires
Application:	The camera is designed for indoor use, due to the possibility of steam condensation.
Main features:	<ul style="list-style-type: none"> <li>• Auto Flip - auto-rotates the camera during "tilt" type moving</li> <li>• IR LED activation reason and time setting</li> <li>• Day/Night mode (color/b&amp;w/auto)</li> <li>• BLC - configurable Back Light Compensation</li> <li>• ICR - Movable InfraRed filter</li> </ul>
Housing:	Speed Dome, Metal
Color:	White
Operation temp:	0 °C ... 40 °C
Weight:	0.85 kg
Dimensions:	Ø 136 x 165 mm
Supported languages:	English, Polish, Portuguese
Guarantee:	2 years

## PRESENTATION

Bottom view (IR LEDs and twilight sensor visible):



Camera is very small:



Mounting side view:



Camera connectors (video - BNC, power - 2.1/5.5mm, RS-485 - pair of wires):





In the kit:



## OUR TESTS

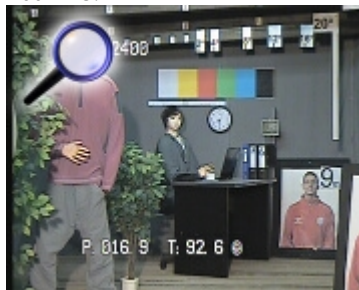
Screen shots from camera tests:

Camera image at artificial illumination (about 30Lux):

Zoom x1:



Zoom x3:



Zoom x10:



Camera image at night conditions with internal built-in IR illuminator on:



DELTA-OPTI Monika Matysiak; <https://www.delta.poznan.pl>  
POL; 60-713 Poznań; Graniczna 10  
e-mail: delta-opti@delta.poznan.pl; tel: +(48) 61 864 69 60

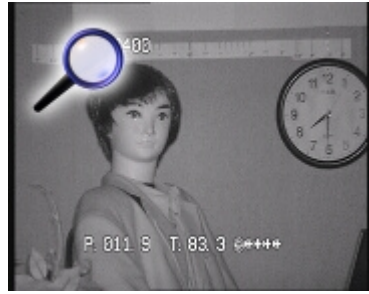
Zoom x1:



Zoom x3:



Zoom x10:



Camera image at direct strong light opposite to camera:



## OUR OPINIONS



- Adaptive adjusting of the IR illuminator power to the lens zoom and outdoor light conditions.
- No image distortions due to dome camera cover.
- Small dimensions of the camera.

## PACKAGE

Dimensions (L x W x H): 0x0x0 mm	Gross Weight: 0 kg
----------------------------------	--------------------

