

Code: PTZ-660EF

OUTDOOR PTZ CAMERA **PTZ-660EF** 700 TVL 5 ... 60 mm

Net: **227.08 EUR** Gross: **227.08 EUR**

Small dimensions, outdoor PTZ camera with motorized zoom lens. All is placed inside metal, hermetic housing. As one of the few PTZ cameras is equipped with rotation speed auto adjustment depending on the set lens zoom parameter. Camera equipped with perfect very high resolution Sony sensor and Sony Effio Digital Image Processor.

All connectors can be easily hidden inside the camera bracket. Camera works very well with external IR illuminators. Due to above camera is perfect to work both in daylight and night conditions.

The most advantage of this camera is lens with zoom in range 5 ... 60 mm, unprecedented among PTZ cameras. This solution allows to monitor the several hundred meters area without problem.



SPECIFICATION

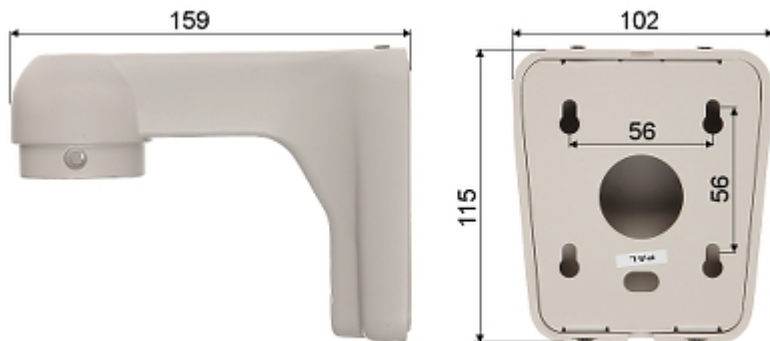
Standard:	PAL
Sensor:	1/4 " Sony EXview HAD II CCD
Digital Image Processor:	DSP Sony Effio-E
Resolution:	650 TVL (color) 700 TVL (B/W)
Lens:	5 ... 60 mm (manufacturer data) 5 ... 55 mm (our tests result)
View angle:	51 ° ... 4.5 ° (manufacturer data) 50 ° ... 5 ° (our tests result)
Optical zoom:	x 12 (manufacturer data) x 11 (our tests result)
Digital zoom:	—
Min. illumination:	0.001 Lux (manufacturer data)
Image stabilization:	—
Video output:	1 Vpp / 75 Ω
S/N ratio:	52 dB (AGC off)
Rotation speed depending on ZOOM level:	✓
Rotation speed (manual control):	36 °/s (horizontal) 12 °/s (vertical)
Horizontal rotation range:	360 ° continuous
Vertical rotation range:	0 ° ... 90 °
PTZ control:	Via interface RS-485

DELTA-OPTI Monika Matysiak; <https://www.delta.poznan.pl>
POL; 60-713 Poznań; Graniczna 10
e-mail: delta-opti@delta.poznan.pl; tel: +(48) 61 864 69 60

Protocols:	Pelco-D, Pelco-P
Baud rates:	1200, 2400, 4800, 9600 bps
Camera connectors:	Video - socket BNC Power supply - socket 2.1/5.5 mm RS-485 - pair of wires
Main features:	<ul style="list-style-type: none"> • AutoFocus, AutoIris • WDR - Wide Dynamic Range • DNR - Digital Noise Reduction • WB - White Balance (ATW/AWB/manual/indoor/outdoor) • AGC - Automatic Gain Control • Gain - Image enhancement • BLC - configurable Back Light Compensation • HLC - High Light Compensation (spot) • Motion Detection • Privacy zones • Mirror - Mirror image • Sharpness - sharper image outlines
Power supply:	12 V DC / 700 mA
"Index of Protection":	IP66
Operation temp:	-10 °C ... 50 °C
Weight:	1.28 kg
Dimensions:	Ø 123 x 142 mm
Supported languages:	English, French, Spanish, German, Portuguese, Russian, Chinese
Manufacturer / Brand:	
Guarantee:	2 years

PRESENTATION

Bracket dimensions:

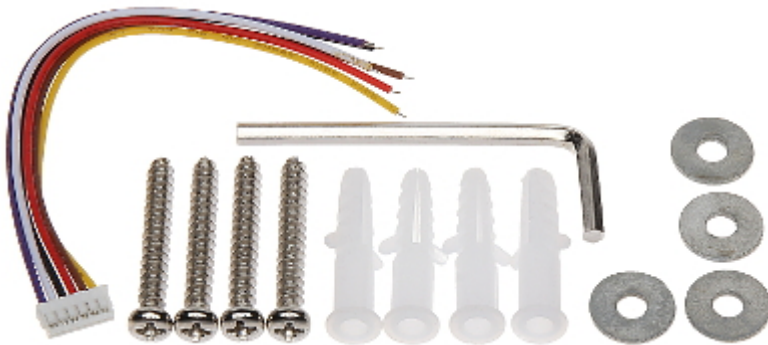


Camera connectors:



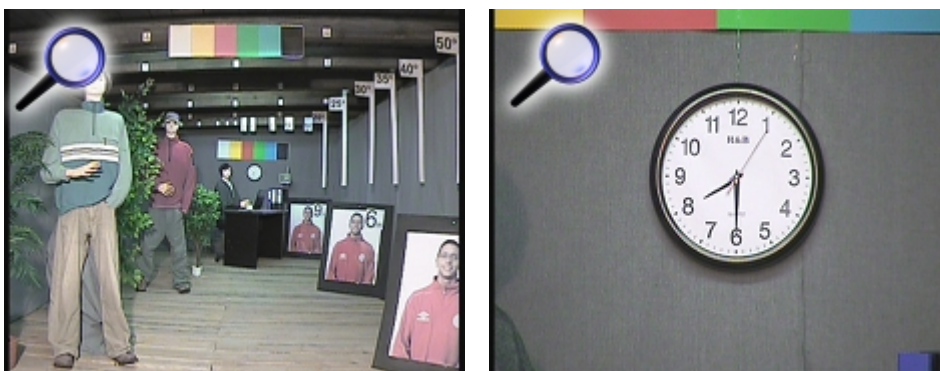


In the kit:

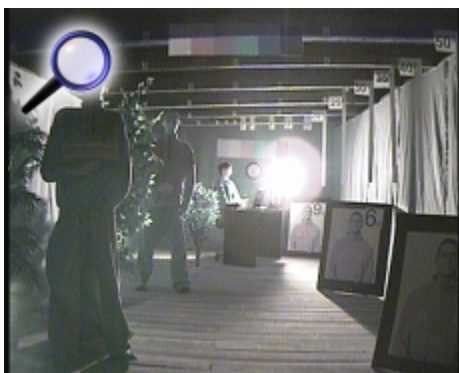


OUR TESTS

Camera image at artificial illumination (about 30Lux):



Camera image at direct strong light opposite to camera:



Camera image at night conditions with external IR illuminator on:

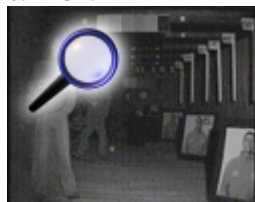


Camera image at night conditions, at different illumination values show below:

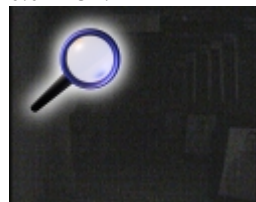
1 LUX:



0.1 LUX:



0.01 LUX:



OUR OPINIONS



- Very good quality image due to Sony EXview HAD II sensor.
- Small dimensions camera is difficult to see to other people.
- Rotation speed auto adjustment depending on set zoom lens parameter.



- Camera sensitivity parameter is lower than value declared by the manufacturer.

PACKAGE

Dimensions (L x W x H): 0x0x0 mm	Gross Weight: 0 kg
----------------------------------	--------------------