

Code: STH-30W-4K

## LED FLOODLIGHT **STH-30W-4K** SonneTech

Net: 54.50 DKK Gross: 54.50 DKK



Illuminator can be used indoors and outdoors. Incomparably greater lifetime of the LEDs compared to traditional halogen bulb provides cheap and reliable operation.

The use of multiple LEDs provides a better heat dissipation, and the longer lifetime of the reflector and allows for uniform light output.

### SPECIFICATION

Luminous flux:	2700 lm
Illumination angle:	120 °
Light color:	Neutral, 4000 ... 4500 K
Twilight switch:	—
Power supply:	110 ... 240 V AC
Nominal power:	30 W 31.6 W (our tests result)
Power factor:	0.95
Power supply adapter efficiency:	84 %
Energy class:	A+
Illuminance in the distance of 3m:	118 lx
CRI:	> 70
Main features:	<ul style="list-style-type: none"><li>• LED SMD 5730 diodes</li><li>• LED lifetime 35 000 h</li><li>• Solid workmanship</li></ul>
Housing:	Aluminum
"Index of Protection":	IP65
Operation temp:	-20 °C ... 50 °C
Weight:	1.25 kg

DELTA-OPTI Monika Matysiak; <https://www.delta.poznan.pl>  
POL; 60-713 Poznań; Graniczna 10  
e-mail: [delta-opti@delta.poznan.pl](mailto:delta-opti@delta.poznan.pl); tel: +(48) 61 864 69 60

Dimensions:	216 x 217 x 103 mm
Manufacturer / Brand:	SonneTech
Guarantee:	2 years

## PRESENTATION

Front view:



Rear view:



Package:

DELTA-OPTI Monika Matysiak; <https://www.delta.poznan.pl>  
POL; 60-713 Poznań; Graniczna 10  
e-mail: [delta-opti@delta.poznan.pl](mailto:delta-opti@delta.poznan.pl); tel: +(48) 61 864 69 60



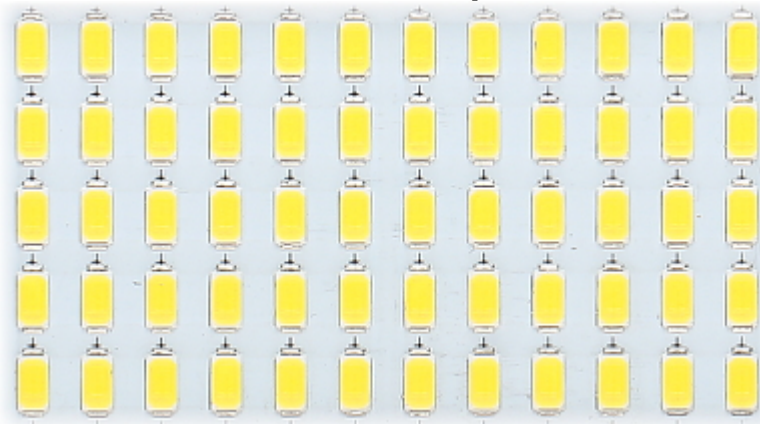
## OUR TESTS

Adding to offer a new line of LED products of the SonneTech company, we made tests of many floodlights available on the market. Below we present the principal advantages of our chosen floodlights:

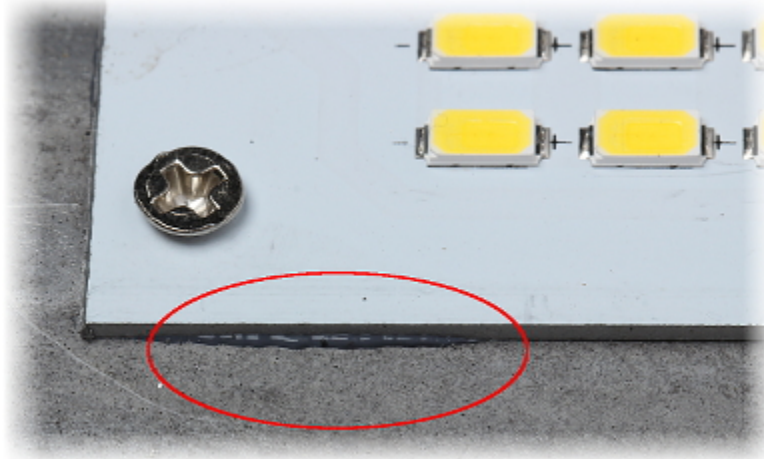
Better heat dissipation through the well-finned rear panel:



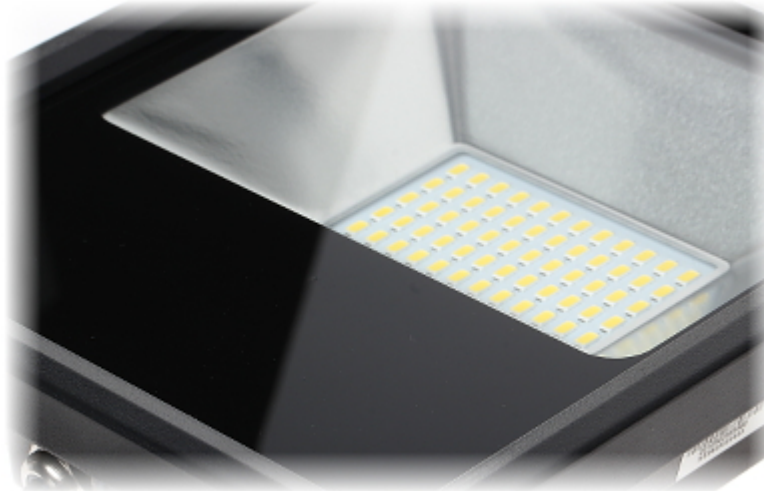
The LED modules with SMD diodes better dissipate heat than COB diodes, by which is increased the lamp lifetime:



Between LED modules and housing is used a high quality thermal grease:



Glass pane better transmits light and does not yellow over time:



Precisely constructed and fitted housing and silicone seals, which do not deform and allow to resealing of the housing:



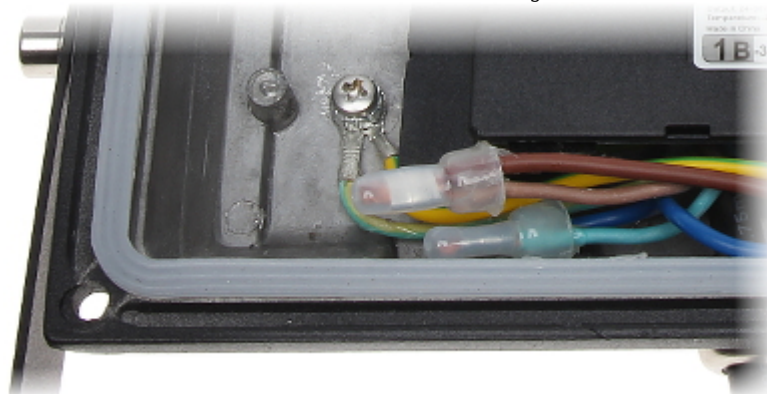
Mounting screws on the back of the housing beneficially affect the aesthetics of housing:



Well shaped reflector:



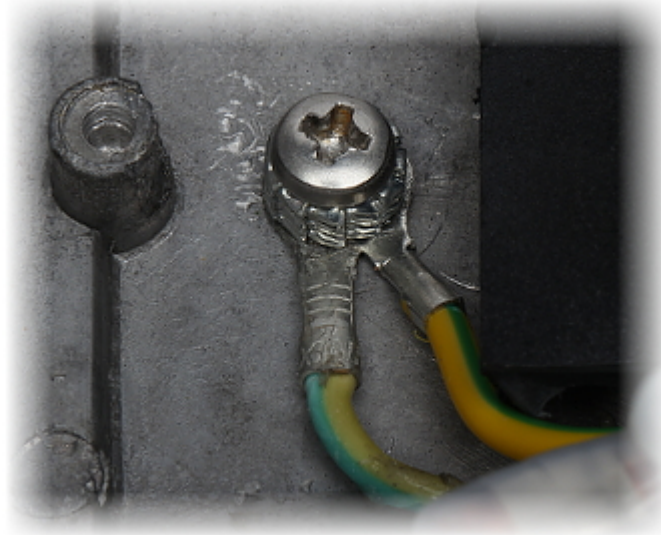
Safe and secure cable connections inside the housing:



The power cables with cross section 3 x 0.75 mm<sup>2</sup>:



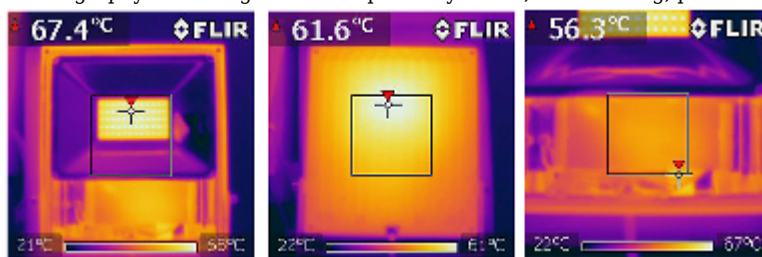
Solid PE cable connection to the housing:



Power supply adapter is tightly flooded with a special thermal adhesive:



Thermography of floodlight test - respectively: LEDs, rear housing, power adapter:



## OUR OPINIONS



- See our tests of floodlights that were made before we added them to offer.



- 
- Very solid construction.

#### PACKAGE

Dimensions (L x W x H): 0x0x0 mm	Gross Weight: 0 kg
----------------------------------	--------------------