

Code: GEMINI-77-55

## PAL CAMERA **GEMINI-77-55** 700 TVL 5 ... 50 mm

Net: **100.03 EUR** Gross: **100.03 EUR**

Camera equipped with perfect very high resolution Sony sensor and Sony Effio Digital Image Processor. Very high resolution of the camera sensor ensures more detailed image than standard CCTV camera. The high resolution sensor guarantees high detailed image, so this camera is perfect solution for surveillance systems requiring persons or vehicles recognition, for example at places like: buildings entrance, lobbies, gates, lounges, etc. OSD menu allows to set many useful functions and parameters. It is equipped with IR illuminator, which is turned on by twilight sensor when illumination conditions are low. Camera bracket allows to adjust the camera to any direction, and power cables are hidden inside the bracket. Camera is according to IP66 Index of Protection norm.



### SPECIFICATION

Standard:	PAL
Sensor:	1/3 " Sony EXview HAD II CCD
Digital Image Processor:	DSP Sony Effio-E
Resolution:	700 TVL
Video output:	1 Vpp / 75 Ω
Lens:	5 ... 50 mm DAIWAN Korean company
View angle:	<ul style="list-style-type: none"><li>• 51 ° ... 5.5 ° (manufacturer data)</li><li>• 45 ° ... 5.5 ° (our tests result)</li></ul>
S/N ratio:	52 dB
Range of IR illumination:	50 m
OSD menu:	✓
Main features:	<ul style="list-style-type: none"><li>• WDR - Wide Dynamic Range</li><li>• DNR - Digital Noise Reduction</li><li>• HLC - High Light Compensation (spot)</li><li>• BLC - configurable Back Light Compensation</li><li>• Configurable Privacy Zones</li><li>• Motion Detection</li><li>• Sharpness - sharper image outlines</li><li>• Mirror - Mirror image</li></ul>
Power supply:	12 V / 490 mA
Housing:	Compact, Metal
Color:	Dark graphite
"Index of Protection":	IP66
Operation temp:	-20 °C ... 50 °C
Weight:	1.18 kg
Dimensions:	250 x 120 x 155 mm

DELTA-OPTI Monika Matysiak; <https://www.delta.poznan.pl>  
POL; 60-713 Poznań; Graniczna 10  
e-mail: [delta-opti@delta.poznan.pl](mailto:delta-opti@delta.poznan.pl); tel: +(48) 61 864 69 60

Manufacturer / Brand:	GEMINI
Guarantee:	2 years

## PRESENTATION

Front view:



Side view:



Rear view (OSD menu keys and lens control knobs visible):



Mounting dimensions:



In the kit:



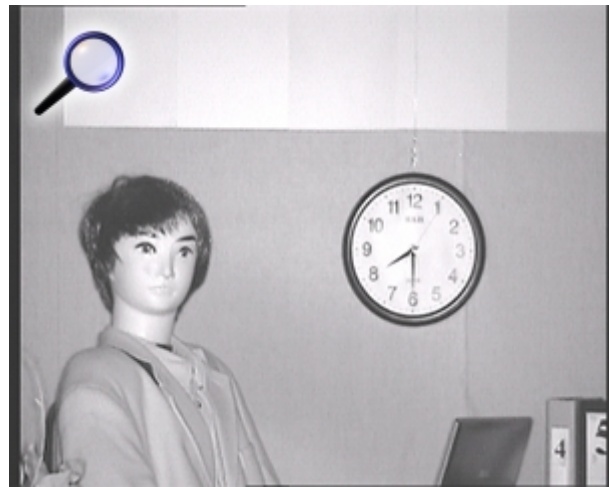
## OUR TESTS

Camera image at artificial illumination (about 30Lux):





Camera image at night conditions with internal built-in IR illuminator on:



Camera image at direct strong light opposite to camera:



## OUR OPINIONS



- Additional "SPOT" video output allows to quick change the camera parameters without the need to disconnect it from monitoring system.

**PACKAGE**

Dimensions (L x W x H): 0x0x0 mm	Gross Weight: 0 kg
----------------------------------	--------------------

