

Code: SCC-30A-PWM-LCD

SOLAR CHARGE CONTROLLER SCC-30A-PWM-LCD

Net: 15.34 EUR Gross: 15.34 EUR

Solar panels are a clean and ecological source of electricity. Obtaining this energy, however, poses a number of challenges for device designers. The amount of energy produced by the panel is strongly dependent on the angle of incidence and the intensity of the light falling on the surface of the cells. This, in turn, leads to unstable power supply parameters at the output, as even shading a small part of the panel may drastically reduce the efficiency.

The optimal solution to the above-mentioned problems is the use of a set consisting of a solar panel, a battery and a charge controller. Such a set allows to ensure constant parameters of power supply to receivers, and also to store energy produced excessively for later use.

The SCC-30A-PWM-LCD solar charge controller allows you to connect panels connected to each other both in series and in parallel - remembering not to exceed the permissible values of current and voltage at the input of the device. Due to the operating characteristics of the PWM controllers, it should be remembered that when the panels are connected in series, the rated voltage at the output for charging the battery is 24V.

Attention! Solar controllers are adapted to work with solar panels. Do not use them with any other power source.



SPECIFICATION

Regulation Type:	PWM
Rated voltage:	12 / 24 V
Rated current:	30 A
Permitted voltage range:	<ul style="list-style-type: none">• ≤ 23 V for 12 V battery - The range of the highest operating voltage of a set of panels connected to one input of the controller• ≤ 46 V for 24 V battery - The range of the highest operating voltage of a set of panels connected to one input of the controller
Output voltage:	Equal to the voltage at the battery terminals
Battery charging current:	max. 30 A
Load Current:	max. 10 A
Main features:	<ul style="list-style-type: none">• 2 x USB power output : 5 V / 2 A,• The device is designed to charge only AGM, gel and lead-acid batteries,• LCD display,• LED diodes indicating the device operation status,• Operation modes :<ul style="list-style-type: none">- 24H - the load is powered all the time- 1H ... 23H - the load is powered for the selected number of hours after sunset- 0H - the load is powered from dusk till dawn
Weight:	0.13 kg
Dimensions:	134 x 70 x 30 mm
Guarantee:	2 years

PRESENTATION

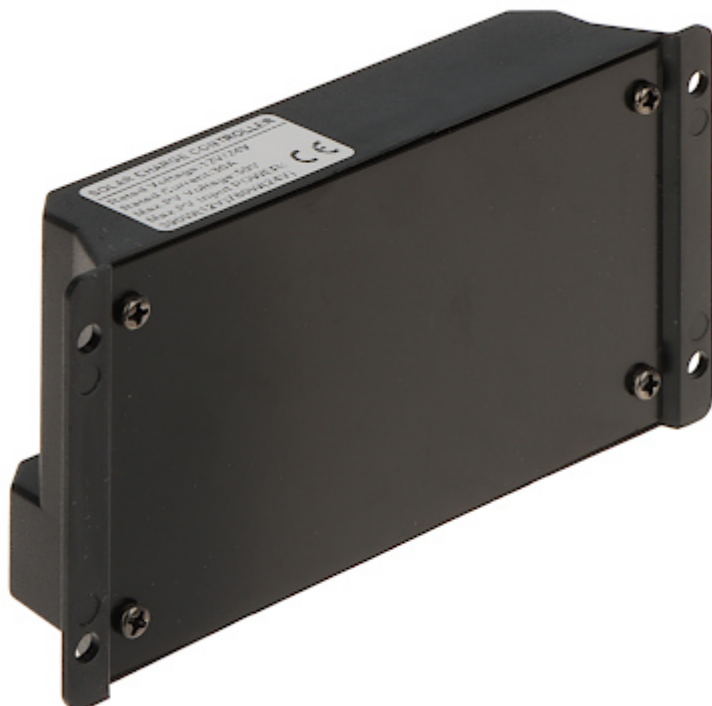
Front view:



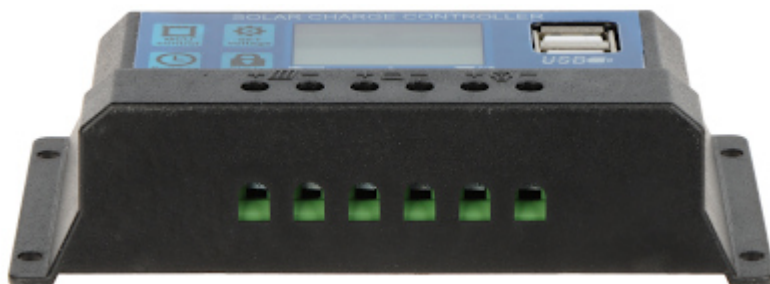
DELTA-OPTI Monika Matysiak; <https://www.delta.poznan.pl>
POL; 60-713 Poznań; Graniczna 10
e-mail: delta-opti@delta.poznan.pl; tel: +(48) 61 864 69 60



Rear view:



Connectors:



PACKAGE

Dimensions (L x W x H): 0x0x0 mm	Gross Weight: 0 kg
----------------------------------	--------------------



DELTA-OPTI Monika Matysiak; <https://www.delta.poznan.pl>
 POL; 60-713 Poznań; Graniczna 10
 e-mail: delta-opti@delta.poznan.pl; tel: +(48) 61 864 69 60